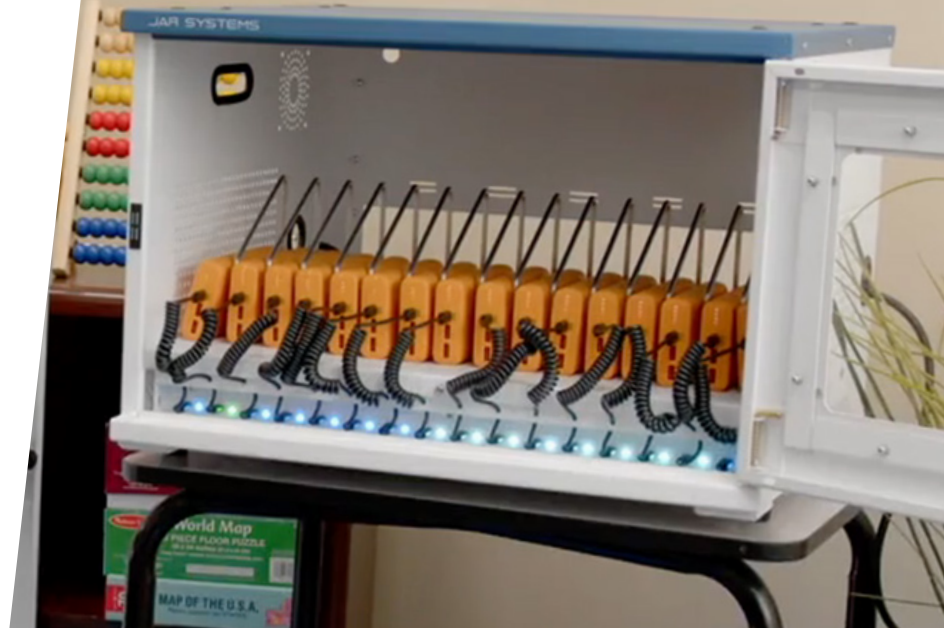


Library Check-Out USB-C Charging Solution

Make At-the-Desk Charging
a Reality with Centralized
Power Bank Check-Out



Ready-to-Go

Library Check-Out with Quick-Sense USB-C Charging is easy to get started with. Just plug in the charging station and connect the power banks.



Reduce Disruptions

Power banks enable students to charge devices while they work at their desks or any other location, regardless of outlet or charging cable availability.



Efficient USB-C Charging

Powered by Quick-Sense USB-C PD charging, the Flex-Share USB-C Station intelligently distributes power to your devices without using AC adapters.



Library Check-Out Charging Solutions include everything you need to make active charging of educational devices available to students from a centralized check-out station. When placed in libraries or media centers, it provides an easy way for students to keep devices charged as they work from any location without being tied to an outlet or having the device's AC charging cable present.



65W Laptops
1.3 Full Charges
1.5 Hours/Unit



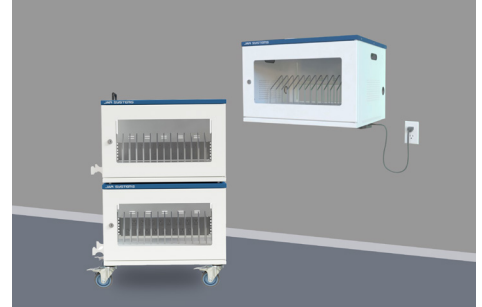
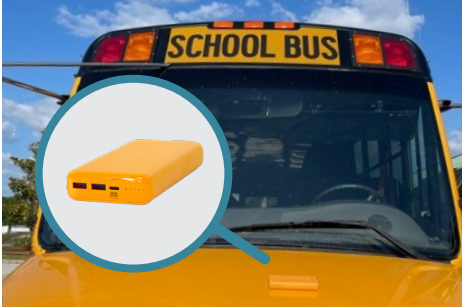
Tablets
2.5 Full Charges
1.25 Hours/Unit



Smartphones
4 Full Charges
.55 Hours/Unit

Charge times are based on powered down devices.

A Simply Powerful Bundle



Visible Power Banks

Active Charge Power Banks in “school bus yellow” are great for differentiation from other devices. They provide ample power for students to charge while they work on their lessons.

Easy Asset Tracking

Each Active Charge Power Bank comes individually serialized and barcoded, so you can keep track of them alongside other school district assets in your management program.

Versatile Charging Station

Flex-Share Charging Stations are highly versatile and can also charge and secure other devices such as Chromebooks or tablets. They can be wall-mounted, stacked, or made mobile with casters.



Connectors for Non-USB-C Devices

Get cables for connecting the power banks to devices with other types of charging ports. Cables are available for most major device types.



Included

Part Number: LIB16PB-USBC

The part number used for your order may vary due to custom configurations. Contact your IT vendor for your specific part number.

- 1 Flex-Share USB-C Charging Station
- 16 Active Charge Power Banks
- 16 USB-C to USB-C connector cables

Specifications

Flex-Share USB-C Charging Station

- 16 Quick-Sense USB-C PD Charging Ports
- Bay Dimensions: 11.5”H x 1”W x 13”D
- Dimensions: 14.5”H x 22”W x 19”D

Weight: 61.5 lbs empty

Input | 120V 50/60Hz 10A

Output | 5V@2.7A/9V@2.7A/12V@2.7A/15V@2.7A/20V@3.1A

65W output max per USB-C port

500W output max per hub

Overcurrent, overvoltage protection

External, replaceable power cable

Removable/reversible front door

Individually keyed lock with 2 keys included

Active Charge Power Banks:

Dimensions: 6.17”H x 2.92”W x 0.98”D

Weight: 0.85 lbs

20,000 mAh, 74Wh Capacity

USB-C PD 3.0 Port (1):

Input | 45W Max. 5V=3A/9V=3A/12V=3A/15V=3A/20V=2.25A

Output | 65W Max. 5V=3A/9V=3A/12V=3A/15V=3A/20V=3.25A

Low-current charging mode for low-powered peripherals.

USB-A Quick Charge 3.0 Ports (2):

Output | 18W Max. 5V-V=3A/6V-9V=2A/9V=1.5A

Warranty

Station Enclosure | 5 years

Quick-Sense USB-C Hub | 2 years

Active Charge Power Banks | 1 year

Cables | 1 year