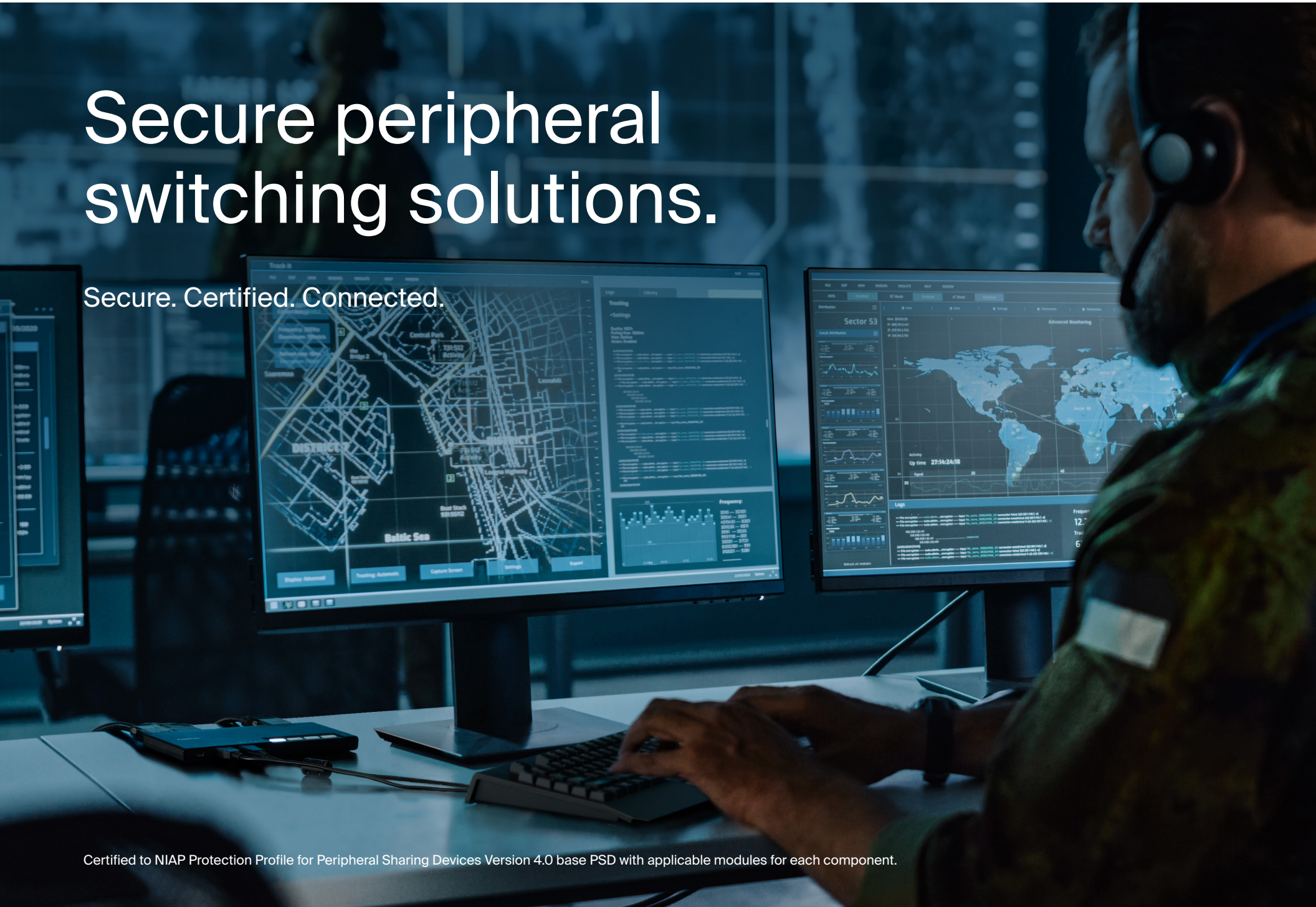


# Secure peripheral switching solutions.

Secure. Certified. Connected.



## Secure

Protect against cyber threats for mission-critical applications demanding guaranteed isolation between systems.

## Comply

Developed for compliance with NIAP Protection Profile PSD 4.0.

## Eliminate

Potential user errors with preconfigurable channels and visual indication of security enclaves.

# Contents

IsoClave RED/BLACK Secure KVM Series	6
Modular Secure KVM Series	10
Modular Secure KM Series	14
Universal 2nd Generation Secure KVM Series	18
Universal DisplayPort Secure KVM Series	24
DisplayPort DuoClave Secure KVMs	30
DisplayPort MultiClave Secure KVMs	34



# The solution.

Belkin offers the latest Common Criteria NIAP Protection Profile 4.0-certified peripheral sharing devices designed to maintain air-gap isolation with the desktop while improving operator efficiency and effectiveness.





## The ultimate security solution.

All Belkin secure switching products are equipped with advanced cybersecurity provisions including:

- Optical data diodes assuring unidirectional data flow from each peripheral.
- Device emulation and filtering of connected USB devices.
- Secured EDID emulation ensuring protection of connected monitors.

## Tamper-proof system.

All Belkin secure switching products are equipped with an end-to-end tamper-proof system including:

- A holographic security tamper-evident label on the switch enclosure to indicate if the product has been opened or compromised.
- Universal 2nd Gen SKVMs include an always-on, battery-backed, active anti-tamper circuit that protects the unit while in transit and after deployment.
- Universal 2nd Gen SKVM ships in security taped packaging, ensuring anti-tamper protection in transport from the factory to the end site.

# IsoClave RED/BLACK Secure KVM Series



Belkin's IsoClave RED/BLACK Secure KVM Series was designed as an off-the-shelf solution to meet stringent electrical isolation requirements. The CNSSAM TEMPEST/01-13 Table 2 and Table 6 specifies criteria to satisfy high level security. Distinguishing features include isolating host USB and video cables designed to prevent unauthorized cable attachment with pre-installed tamper-resistant screws. This security optimized solution affords the highest level of isolation in an off-the shelf SKVM.

- Designed to meet requirements for red/black isolation between enclaves, 60 dB of isolation for digital signaling.
- Configured for the latest Common Criteria and NIAP cybersecurity standard: NIAP Protection Profile for Peripheral Sharing Devices 4.0 and TAA-compliant.
- Provides the highest level of isolation among commercial SKVMs.
- Secure and ready to deploy platform with preinstalled isolating host cables.
- Convenient preconfigured, colored ports ensure front panel facilitates channel identification, increasing situational awareness and reducing operator errors.
- Compatible with the Belkin Remote Control with Integrated Keyboard.



**IsoClave RED/BLACK Secure KVM Switch, 2-Port Single Head**  
FIDN102KVM-UN4C



**IsoClave RED/BLACK Secure KVM Switch, 4-Port Single Head**  
FIDN104KVM-UN4C



**IsoClave RED/BLACK Secure KVM Switch, 2-Port Dual Head**  
FIDN202KVM-UN4C



**IsoClave RED/BLACK Secure KVM Switch, 4-Port Dual Head**  
FIDN204KVM-UN4C

# Meet a no-compromise solution.

Matching military-grade cybersecurity standards, the IsoClave RED/BLACK Secure KVM Series represents a no-compromise solution against present day cyber threats. These switches are designed to perform mission-critical applications in government, military, financial, healthcare, energy and any application warranting surefire isolation between systems at an operator’s desk.

Operators increase efficiency with an improved user experience that declutters the desk while enhancing awareness of the security domain an operator is working in. Configured for use on government and military networks, the IsoClave RED/BLACK Secure KVM Series addresses high-level security needs that demand unwavering performance.





# IsoClave RED/BLACK SKVMs

Part Number	FIDN102KVM-UN4C	FIDN202KVM-UN4C	FIDN104KVM-UN4C	FIDN204KVM-UN4C
No. of Computers	2	2	4	4
No. of Displays	1	2	1	2
Max Resolutions Supported	3840 x 2160 pixels (UHD 4K) @ 60Hz			
Console Ports (Devices)				
Console Mouse and Keyboard Ports	USB Type-A female connector (1 designated port for mouse and 1 designated port for keyboard)			
Console Display Ports	1x DP 1.2	2x DP 1.2	1x DP 1.2	2x DP 1.2
Computer Ports				
Computer Display Ports	2x DP 1.2	2x DP 1.2	4x DP 1.2	4x DP 1.2
Computer Keyboard/Mouse Ports	USB Type-B			
Physical				
Dimensions*	12.5 (W) x 1.7 (H) x 6.2 (L) in. / 317.5 (W) x 43.2 (H) x 162.6 (L) mm	12.5 (W) x 1.7 (H) x 6.2 (L) in. / 317.5 (W) x 43.2 (H) x 162.6 (L) mm	12.5 (W) x 1.7 (H) x 6.2 (L) in. / 317.5 (W) x 43.2 (H) x 162.6 (L) mm	12.5 (W) x 3.6 (H) x 6.2 (L) in. / 317.5 (W) x 91.4 (H) x 162.6 (L) mm
Weight*	3.9 lbs. (1.77kg.)	4.85 lbs. (2.2kg.)	3.9 lbs. (1.77kg.)	4.85 lbs. (2.2kg.)
Power				
Power Requirements	12V 2.5A DC Power Supply			
AC Input	100 to 240VAC			
Power Type	Worldwide with interchangeable mains connectors for NA, EU, UK, ANZ included 5mm DIN connector.			
Environmental				
Operating Temperature	32° to 104° F (0° to 40° C)			
Storage Temperature	-4° to 140° F (-20° to 60° C)			
Humidity Storage and Use	0-80% RH, non-condensing			
Certification				
Security Accreditation	NIAP Protection Profile PSD Ver. 4.0, Audio Input v 1.0. Keyboard/Mouse v 1.0. Video/Display v 1.0. TEMPEST variants available via an SDIP-55 NATO accredited TEMPEST test facility.			
Regulatory Compliance	FCC Class A, UL, CE, RoHS, ICES, RCM, UKCA			

\*KVM Only

Part Number	FIDN102KVM-UN4C	FIDN202KVM-UN4C	FIDN104KVM-UN4C	FIDN204KVM-UN4C
General Information				
Made In	Designed in California. Assembled in US with US-based technical support (TAA compliant).			
Product Life Cycle	5 years			
Warranty	3 years standard (upgradeable to 4 or 5 years)			
Enclosure	Heavy-duty aluminum enclosure with metal faceplate.			
Optional Adapter	0401-00853 Power Adapter Kit, 12V/2.5A			
SKVM Monitor or Video-Only Cables				
DP to DP	FIDN1VCBL-PP6t TAA DP/DP Video Cable, DP M/M; 6 ft. (1.8m) FIDN1VCBL-PP10t TAA DP/DP Video Cable, DP M/M; 10 ft. (3m)			

Part Number	Description
0401-00853	Power Adapter Kit, 2.5A
FIDN-KVM-MOUNT	Under-Desk Mount
FIDN-WSMOUNT	Work Surface and Cubicle Mount for SKVM/SKM
FIDN008KBD	2-4-8 Port SKVM Remote Control w/Integrated Keyboard
FIDN-KVM-EXTC6	Extender Transmitter Copper CAT6 - Universal Video (4K 60Hz 4:2:0)
FIDN-KVM-EXRC6	Extender Receiver Copper CAT6 - Universal Video (4K 60Hz 4:2:0)
FIDN-KVM-EXTC6X	Extender Transmitter Copper CAT6 - Universal Video (4K 60Hz 4:4:4)
FIDN-KVM-EXRC6X	Extender Receiver Copper CAT6 - Universal Video (4K 60Hz 4:4:4)
FIDN-KVM-EXTFI	Extender Transmitter Fiber SFP - Universal Video (4K 60Hz 4:2:0)
FIDN-KVM-EXRFI	Extender Receiver Fiber SFP - Universal Video (4K 60Hz 4:2:0)

# Modular Secure KVM Series



Belkin's Modular SKVM series is designed and built for government and military agencies around the world to safeguard critical data and computer systems. While only slightly larger than a modern smartphone, Belkin's Modular SKVMs and SKMs meet all critical security constructs to ensure air-gap isolation and system security in the smallest form factor on the market. Universal video compatibility, innovative mounting options, and an included remote control allow administrators to declutter the operator's desk without jeopardizing control and access.

- Smallest form factor for 2-, 4- or 8-port SKVM.
- Universal video compatibility.
- Included remote control supports SKVM switching while decluttering the desk.
- Optional mounting hardware supports VESA, cubicle and under-the-desk mounting.
- Certified for NIAP Protection Profile 4.0 to meet the highest security standards.
- TAA compliant, assembled in the USA.
- Dedicated US-based free technical support.





**2-Port Single-Head Modular  
SKVM Switch Base Unit PP4.0  
w/Remote**

FIDN102MOD-BA-4



**2-Port Dual-Head Modular  
SKVM Switch Base Unit PP4.0  
w/Remote**

FIDN202MOD-BA-4



**4-Port Single-Head Modular  
SKVM Switch Base Unit PP4.0  
w/Remote**

FIDN104MOD-BA-4



**4-Port Dual-Head Modular  
SKVM Switch Base Unit PP4.0  
w/Remote**

FIDN204MOD-BA-4



**8-Port Single-Head Modular  
SKVM Switch Base Unit PP4.0  
w/Remote**

FIDN108MOD-BA-4



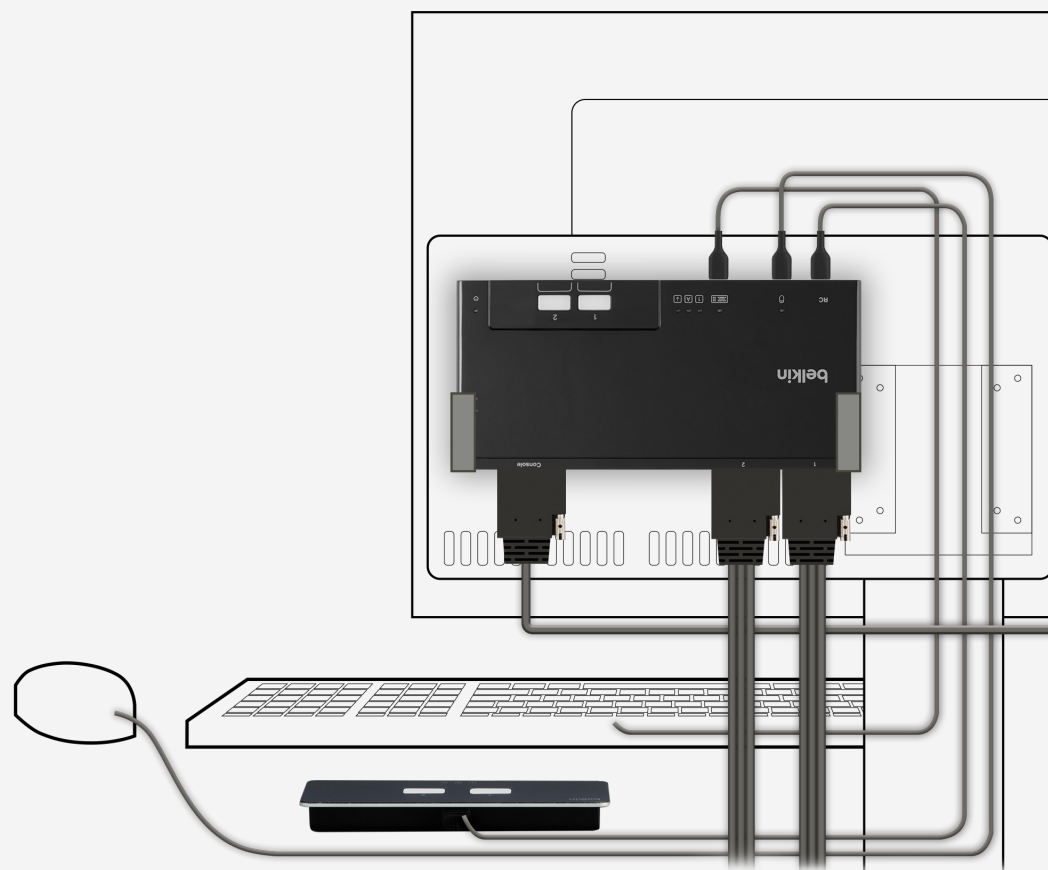
**8-Port Dual-Head Modular  
SKVM Switch Base Unit PP4.0  
w/Remote**

FIDN208MOD-BA-4

## Free up your desk.

With a 94% smaller footprint than other SKVMs, the Modular SKVM series is designed to take up as little desk space as possible while adhering to NIAP PP PSD 4.0 requirements.

Optional mounting choices and the included remote control combine to help declutter the desk while enhancing operator ergonomics in even the most cramped work environments.



# Modular SKVMs

Modular SKVM											
Part Number	F1DN102 MOD-PP-4 (DisplayPort)	F1DN202 MOD-PP-4 (DisplayPort)	F1DN104 MOD-PP-4 (DisplayPort)	F1DN204 MOD-PP-4 (DisplayPort)	F1DN102 MOD-DD-4 (DVI)	F1DN202 MOD-DD-4 (DVI)	F1DN104 MOD-DD-4 (DVI)	F1DN204 MOD-HH-4 (DVI)	F1DN102 MOD-HH-4 (HDMI)	F1DN202 MOD-HH-4 (HDMI)	F1DN104 MOD-HH-4 (HDMI)
No. of Computers	2	2	4	4	2	2	4	4	2	2	4
No. of Displays	1	2	1	2	1	2	1	2	1	2	1
Console Ports (Devices)											
Console Mouse and Keyboard Ports	USB Type-A female connector (1 designated port for mouse and 1 designated port for keyboard) with status indicator lights										
Console Remote Control Port	USB Mini (female)										
Console Video Port	DisplayPort				DVI				HDMI		
Integrated Console Cable	1x 6 ft. (1.8m) single-monitor integrated video cable	1x 6 ft. (1.8m) dual-monitor integrated video cable	1x 6 ft. (1.8m) single-monitor integrated video cable	1x 6 ft. (1.8m) dual-monitor integrated video cable	1x 6 ft. (1.8m) single-monitor integrated video cable	1x 6 ft. (1.8m) dual-monitor integrated video cable	1x 6 ft. (1.8m) single-monitor integrated video cable	1x 6 ft. (1.8m) dual-monitor integrated video cable	1x 6 ft. (1.8m) single-monitor integrated video cable	1x 6.ft. (1.8m) dual-monitor integrated video cable	1x 6 ft. (1.8m) single-monitor integrated video cable
Max Resolution Supported	3840 x 2160 pixels (UHD 4K) @ 30Hz										
Computer Ports											
Computer Keyboard/Mouse Port	USB Type-A										
Computer Video Port	DisplayPort				DVI				HDMI		
Integrated Computer Cable	2x 6 ft. (1.8m) integrated cables for video and USB		4x 6 ft. (1.8m) integrated cables for video and USB		2x 6 ft. (1.8m) integrated cables for video and USB		4x 6 ft. (1.8m) integrated cables for video and USB		2x 6 ft. (1.8m) integrated cables for video and USB		4x 6 ft. (1.8m) integrated cables for video and USB
Physical											
Dimensions	3.5 (W) x 7.5 (D) x 0.6 (H) in. / 90 (W) x 190 (D) x 15 (H) mm (unit w/o cables)										
Weight	0.55 lbs. (0.25kg.) (unit w/o cable)										
Power											
Power Requirements	12V, 2.5A DC										
AC Input	100–240VAC										
Power Type	External with WW mains connectors										
Environmental											
Operating Temperature	32° to 104° F (0° to 40° C)										
Storage Temperature	–4° to 140° F (–20° to 60° C)										
Humidity Storage and Use	0–80% RH, non-condensing										
Certification											
Security Accreditation	NIAP Protection Profile PSD Ver. 4.0, Audio Input v 1.0. Keyboard/Mouse v 1.0. Video/Display v 1.0 TEMPEST variants available via an SDIP-55 NATO accredited TEMPEST test facility.										
Regulatory Compliance	FCC Class A, CE, UL, ICES, RCM, RoHS, UKCA										
General Information											
Made In	Designed in California. Assembled in USA with USA-based technical support (TAA compliant).										
Product Life Cycle	5 years										
Warranty	3 years standard (upgradeable to 4 or 5 years)										
Enclosure	Diecast aluminum										

---



# Modular Secure KM Series



Supporting two or four computers, the Belkin Modular SKM series is ideal for desktops that require multiple monitors for real-time monitoring and response. Each computer remains directly connected to its own monitor or monitors while the SKM switches USB keyboard and mouse control with a simple keyboard key press and cursor move to the active display. Modular SKM units are shipped with a complete set of connecting cables and a remote-control unit, should a user desire a button push to switch the keyboard and mouse to a different computer.

- Smallest form factor for 2- or 4-port SKM.
- Included remote control supports SKM control switching while decluttering the desk.
- Optional mounting hardware supports VESA, cubicle, and under-the-desk mounting.
- Certified for NIAP Protection Profile 4.0 to meet the highest security standards.
- TAA compliant, assembled in the USA.
- Dedicated, USA-based free technical support.

# Modular SKMs

Modular SKM		
Part Number	F1DN002MOD-KM-4	F1DN004MOD-KM-4
No. of Computers	2	4
No. of Displays	Up to 8	Up to 16
Console Ports (Devices)		
Console Mouse and Keyboard Ports	USB Type-A female connector (1 designated port for mouse and 1 designated port) for keyboard with status indicator lights	
Console Remote Control Port	USB Mini (female)	
Console Video Port	None	
Max Resolution Supported	N/A	
Computer Ports		
Computer Keyboard/Mouse Port	USB Type-A	
Computer Video Port	None	
Integrated Computer Cable	2x 6 ft. (1.8m) integrated cables for USB	4x 6 ft. (1.8m) integrated cables for USB
Physical		
Dimensions	3.5 (W) x 7.5 (D) x .6 (H) in. / 90 (W) x 190 (D) x 15 (H) mm (unit w/o cables)	
Weight	3.9 lbs.(1.77 kg.) (unit w/o cables)	
Power		
Power Requirements	12V, 2.5A DC	
AC Input	100–240VAC	
Power Type	External with WW mains connectors	
Environmental		
Operating Temperature	32° to 104° F (0° to 40° C)	
Storage Temperature	-4° to 140° F (-20° to 60° C)	
Humidity Storage and Use	0-80% RH, non-condensing	
Certification		
Security Accreditation	NIAP Protection Profile PSD Ver. 4.0, Keyboard/Mouse v 1.0. TEMPEST variants available via an SDIP-55 NATO accredited TEMPEST test facility.	
Regulatory Compliance	FCC Class A, CE, UL, ICES, RCM, RoHS, UKCA	
General Information		
Made In	Designed in California. Assembled in USA with USA-based technical support (TAA compliant).	
Product Life Cycle	5 years	
Warranty	3 years standard (upgradeable to 4 or 5 years)	
Enclosure	Diecast aluminum	

# Accessories

Modular SKMs

Modular SKM Accessories			
FIDN-WSMOUNT	FIDN-MOD-VMOUNT	FIDN-MOD-MOUNT	FIDN008KBD
Work Surface Mount for SKVM/SKM	Modular SKVM/SKM VESA Mount	Modular SKVM/SKM Under-Desk Mount	SKVM Remote Control w/Integrated Keyboard
Modular SKM Replacement Parts			
O401-00811	FIDN-MOD-REM2	FIDN-MOD-REM4	FIDN1MOD-USB-06
Modular SKVM/SKM Power Adapter 12V 2.5A, w/Interchangeable Mains Connector Wall Mount	Modular SKVM/SKM Replacement Remote Control, 2-Port	Modular SKVM/SKM Replacement Remote Control, 4-Port	Modular USB Cable for SKM, 6 ft. (1.8m)



# Cables

## Modular SKVMs

### Host Single-Head Cables for Modular SKVM

Part Number	FIDN1MOD-HC-H06	FIDN1MOD-HC-P06	FIDN1MOD-HC-D06	FIDN1MOD-HC-V06	FIDN1MOD-HC-M06
Description	Modular HDMI Single-Head Host Cable, 6 ft. (1.8m)	Modular DP Single-Head Host Cable, 6 ft. (1.8m)	Modular DVI Single-Head Host Cable, 6 ft. (1.8m)	Modular VGA w/Audio Single-Head Host Cable, 6 ft. (1.8m)	Modular Mini DP Single-Head Host Cable, 6 ft. (1.8m)
Part Number	FIDN-MOD-EXH-04	FIDN2MOD-HC-U03	FIDN1MOD-HC-H10	FIDN1MOD-HC-P10	
Description	Modular Dual- or Single-Head Host Extension Cable, 4 ft. (1.2m)	Modular USB-C Dual- or Single-Head Host Cable, 3 ft. (0.9 m)	Modular HDMI Single-Head Host Cable, 10 ft. (3.0m)	Modular DP Single-Head Host Cable, 10 ft. (3.0m)	

### Host Dual-Head Cables for Modular SKVM

Part Number	FIDN2MOD-HC-H06	FIDN2MOD-HC-P06	FIDN2MOD-HC-P01	FIDN2MOD-HC-D06	FIDN2MOD-HC-V06
Description	Modular HDMI Dual-Head Host Cable, 6 ft. (1.8m)	Modular DP Dual-Head Host Cable, 6 ft. (1.8m)	Modular DP Dual-Head Host Cable, 1 ft. (0.3m)	Modular DVI Dual-Head Host Cable, 6 ft. (1.8m)	Modular VGA w/Audio Dual-Head Host Cable, 6 ft. (1.8m)
Part Number	FIDN2MOD-HC-M06	FIDN2MOD-HC-U03	FIDN2MOD-HC-HP6	FIDN2MOD-HC-DP6	FIDN2MOD-HC-S06
Description	Modular Mini DP Dual-Head Host Cable, 6 ft. (1.8m)	Modular USB-C Dual- or Single-Head Host Cable, 3 ft. (0.9m)	Modular HDMI and DP Dual-Head Host Cable, 6 ft. (1.8m)	Modular DVI and DP Dual-Head Host Cable, 6 ft. (1.8m)	Modular DPMST Dual-Head Host Cable, 6 ft. (1.8m)
Part Number	FIDN-MOD-EXH-04	FIDN2MOD-HC-H10	FIDN2MOD-HC-P10		
Description	Modular Dual- or Single-Head Host Extension Cable, 4 ft. (1.2m)	Modular HDMI Dual-Head Host Cable, 10 ft. (3.0m)	Modular DP Dual-Head Host Cable, 10 ft. (3.0m)		

### Console Single-Head Cables for Modular SKVM

Part Number	FIDN1MOD-CC-H06	FIDN1MOD-CC-P06	FIDN1MOD-CC-D06	FIDN1MOD-CC-V06	FIDN-MOD-EXC-04
Description	Modular HDMI Single-Head Console Cable, 6 ft. (1.8m)	Modular DP Single-Head Console Cable, 6 ft. (1.8m)	Modular DVI Single-Head Console Cable, 6 ft. (1.8m)	Modular VGA w/Audio Single-Head Console Cable, 6 ft. (1.8m)	Modular Dual- or Single-Head Console Extension Cable, 4 ft. (1.2m)
Part Number	FIDN1MOD-CC-H03	FIDN1MOD-CC-P03	FIDN1MOD-CC-D03	FIDN1MOD-CC-H10	FIDN1MOD-CC-P10
Description	Modular HDMI Single-Head Console Cable, 3 ft. (0.9m)	Modular DP Single-Head Console Cable, 3 ft. (0.9m)	Modular DVI Single Head Console Cable, 3 ft. (0.9m)	Modular HDMI Single-Head Console Cable, 10 ft. (3.0m)	Modular DP Single-Head Console Cable, 10 ft. (3.0m)

### Console Dual-Head Cables for Modular SKVM

Part Number	FIDN2MOD-CC-H06	FIDN2MOD-CC-P06	FIDN2MOD-CC-D06	FIDN2MOD-CC-V06	FIDN-MOD-EXC-04
Description	Modular HDMI Dual-Head Console Cable, 6 ft. (1.8m)	Modular DP Dual-Head Console Cable, 6 ft. (1.8m)	Modular DVI Dual-Head Console Cable, 6 ft. (1.8m)	Modular VGA w/Audio Dual-Head Console Cable, 6 ft. (1.8m)	Modular Dual- or Single-Head Console Extension Cable, 4 ft. (1.2m)
Part Number	FIDN2MOD-CC-H03	FIDN2MOD-CC-P03	FIDN2MOD-CC-D03	FIDN2MOD-CC-H10	FIDN2MOD-CC-P10
Description	Modular HDMI Dual-Head Console Cable, 3 ft. (0.9m)	Modular DP Dual-Head Console Cable, 3 ft. (0.9m)	Modular DVI Dual-Head Console, 3 ft. (0.9m)	Modular HDMI Dual-Head Console Cable, 10 ft. (3.0m)	Modular DP Dual-Head Console Cable, 10 ft. (3.0m)

# Universal 2nd Generation Secure KVM Series



Belkin's Universal 2nd Gen SKVM series combines cutting-edge cybersecurity provisions, video performance and user experience to deliver a no-compromise solution for the most demanding applications. Compatible with the SKVM Remote Control with Integrated Keyboard, the 2nd Gen SKVM combines channel selection with a backlit, mechanical keyboard to reduce operator error while decluttering the operator's desktop.

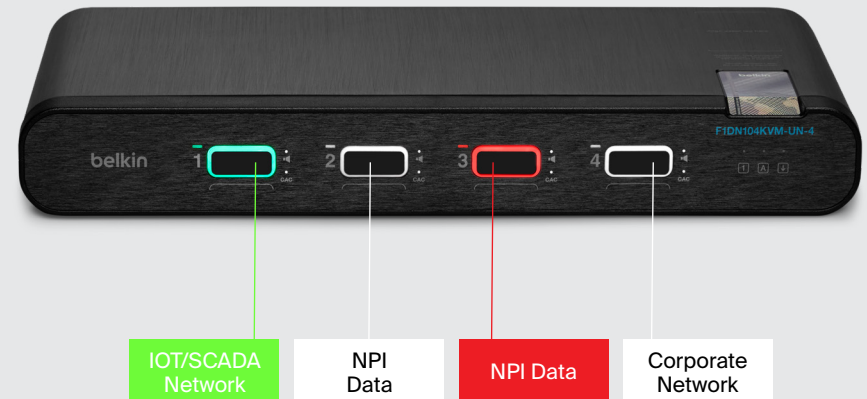
- Available in 2-, 4-, 8- and 16-port models with a choice of single or dual monitors for 1-8 port models, single monitor for 16-port model.
- Future-proof design supports current and upcoming video standards at up to 4K@60Hz with optional passive and active TAA-compliant cables.
- Optional SKVM remote control with integrated keyboard supports full SKVM switching control for the ultimate operator experience.
- Certified for NIAP Protection Profile 4.0 to meet the highest security standards.
- USA-based free technical support.
- On some models, dedicated Common Access Card input ports consolidate the number of CAC readers and allow a single reader to be shared across all connected systems for user authentication.
- Preconfigured with U.S. industry-standard color schemes.
- Coloring ensures front panel facilitates channel identification for increased situational awareness.



Front of Universal 2nd Generation SKVMs



Rear of Universal 2nd Generation SKVMs



## The color of efficiency.

Customizable port coloring and naming on the front panel of the Universal 2nd Generation SKVM facilitates channel identification and reduces operator errors.



## Control the SKVM from the keyboard.

The industry-first SKVM Remote Control with Integrated Keyboard provides full control of Belkin's Universal 2nd Generation and Modular SKVMs. This allows the SKVM to be located off the desk for a clean and decluttered workstation. The keyboard's LED backlighting and status indicators mimic the front-panel configuration of the SKVM to enhance operator channel and enclave awareness.

# Universal 2nd Gen SKVMs

Universal 2nd Gen SKVM									
Part Number	F1DN102KVM-UN-4 (W/CAC)	F1DN102KVM-UNN4	F1DN202KVM-UN-4 (W/CAC)	F1DN202KVM-UNN4	F1DN102KVM-UN4Z (W/CAC)	F1DN202KVM-UN4Z (W/CAC)	F1DN104KVM-UN-4 (W/CAC)	F1DN104KVM-UNN4	F1DN204KVM-UN-4 (W/CAC)
No. of Computers	2	2	2	2			4	4	4
No. of Displays	1	1	2	2			1	1	2
CAC/Audio Freeze	Yes	No	Yes	No	Yes	Yes	Yes	No	Yes
Front Panel Illumination / Multi Color	Yes - Port 1: Green; Port 2: Red						Yes - Port 1: Green; Port 2: White; Port 3: Red; Port 4: White		
Belkin Remote Control with Integrated Keyboard Compatible	Yes								
Console Ports (Devices)									
Console Mouse and Keyboard Ports	USB Type-A female connector (1 designated port for mouse and 1 designated port for keyboard) with status indicator lights								
Console Audio Jack	1/8 (3.5mm) female								
Console Remote Control Port	RJ14 female								
Console CAC/DPP Port	USB Type-A female connector								
Console Video Port	DisplayPort/HDMI combo connector								
Max Resolution Supported	3840 x 2160 pixels (UHD 4K)@ 60Hz - 2560 x 1600 pixels @ 120Hz								
Computer Ports									
Computer Audio Jack	1/8 (3.5mm) female								
Computer Keyboard/Mouse Port	USB Type-B								
Computer Video Port	DisplayPort/HDMI combo connector								
Physical									
Dimensions	12.5 (W) x 6.2 (D) x 1.7 (H) in. / 317.5 (W) x 162.6 (D) x 43.2 (H) mm								12.5 (W) x 6.2 (D) x 3.6 (H) in. / 317.5 (W) x 162.6 (D) x 91.4 (H) mm
Weight	3.9 lbs. (1.77kg.)								4.85 lbs. (2.2kg.)
Power									
Power Requirements	12VDC, 2.5A								
AC Input	100-240VAC								
Power Type	External with WW mains connectors								
Environmental									
Operating Temperature	32° to 104° F (0° to 40° C) for video and USB								
Storage Temperature	-4° to 140° F (-20° to 60° C)								
Humidity Storage and Use	0-80% RH, non-condensing								
Certification									
Security Accreditation	NIAP Protection Profile PSD Ver. 4.0, Audio Input v 1.0., Keyboard/Mouse 1.0., Video/DSplay v 1.0, User Authentication (by model); TEMPEST variants available via an SDIP-55, NATO accredited TEMPEST test facility.								
Regulatory Compliance	FCC Class A, CE, UL, ICES, RCM, RoHS, UKCA								
General Information									
Made in	Designed in California. Assembled in USA with USA-based technical support (TAA compliant).								
Product Life Cycle	5 years								
Warranty	3 years standard (upgradeable to 4 or 5 years)								
Enclosure	Extruded aluminum								

F1DN204KVM-UNN4	F1DN104KVMUNN4Z	F1DN204KVMUNN4Z	F1DN104KVM-UN4Z (W/CAC)	F1DN204KVM-UN4Z (W/CAC)	F1DN108KVM-UN-4 (W/CAC)	F1DN208KVM-UN-4 (W/CAC)	F1DN108KVM-UN4Z (W/CAC)	F1DN208KVM-UN4Z (W/CAC)	F1DN116KVM-UN-4 (W/CAC)
4	4	4	4	4	8	8	8	8	16
2	1	2	1	2	1	2	1	2	1
No	No	No	Yes	Yes	Yes	Yes	Yes	Yes	Yes
	Yes - Port 1: Green; Port 2: Red; Port 3: White; Port 4: Yellow		Yes - Port 1: Green; Port 2: White; Port 3: Red; Port 4: Yellow		Yes - Port 1: Green; Port 2: White; Port 3: Red; Ports 4-8: White		Yes - Port 1: Green; Port 2: White; Port 3: Red; Port 4: Yellow; Ports 5-8: White		No
No									



# Accessories Universal 2nd Gen SKVMs


Universal 2nd Gen SKVM Accessories				
FIDN008KBD	FIDN-DCUAP-UN-4	FIDN-DCUA8-UN-4	FIDN002R	FIDN003R
SKVM Remote Control w/Integrated Keyboard	PP4.0 SKVM to DCU Adapter for 2- and 4-Port	PP4.0 SKVM to DCU Adapter for 8-Port	4-Button DCU for 4-Port SKVM Switches, with LCD Display	3 Button DCU for 4-16 Port SKVM Switches, with LCD Display
FIDN-KVM-EXTC6	FIDN-KVM-EXRC6	FIDN-KVM-EXTC6X	FIDN-KVM-EXRC6X	FIDN-KVM-EXTFI
KVM Host Side CAT6 Extender - Universal Video	KVM Console Side CAT6 Extender - Universal Video	KVM Host Side CAT6 Extender - Universal Video	KVM Console Side CAT6 Extender - Universal Video	KVM Host Side Fiber Extender - Universal Video
FIDN-KVM-EXRFI	FIDN-USB-XTRC	FIDN-MOD-REM2	FIDN-MOD-REM4	FIDN-MOD-REM8
KVM Console Side Fiber Extender - Universal Video	Extender Copper CAT6 USB Transmitter and Receiver	SKVM/SKM Remote Control, 2-Port	SKVM/SKM Remote Control, 4-Port	SKVM/SKM Remote Control, 8-Port
FIDN-MOD-REXT-4	FIDN-WSMOUNT	FIDN-KVM-MOUNT	8100-00297	8100-00279
Remote Control Extension Cable, 4 ft. (1.2m)	Work Surface Mount for SKVM/SKM	Under-Desk Mount	Rackmount Ears for Dual Head 8-Port & Single Head 16-Port SKVM	Rackmount Ears for Single Head 8-Port SKVM
FIDN-KVM-REM2	FIDN-KVM-REM4	FIDN-KVM-REM8	FIDN005U	FIDN008U
Universal SKVM/SKM Remote Control, 2-Port	Universal SKVM/SKM Remote Control, 4-Port	Universal SKVM/SKM Remote Control, 8-Port	CAC Reader	CAC Reader

Universal 2nd Gen SKVM Replacement Parts
0401-00853
Power Adapter Kit, 12V/2.5A with WW Mains Connector for Universal Series 2- & 4-Port SKVM
6000-01356
Power Cord Kit, WW Mains Connector for Universal Series 8- & 16-Port SKVM

# Cables

Universal 2nd Gen SKVMs

Single-Output PC								
SKVM PC Connection Combo	DP to DP	DP to DP	mDP to DP	mDP to DP	HDMI to HDMI	HDMI to HDMI	DVI to HDMI	USB-C to DP
Part Number	F1DN9019b06t	F1D9019b10t	F1DN1CCBL-MP6t	F1DN1CCBL-MP10t	F1DN1CCBL-HH6t	F1DN1CCBL-HH10t	F1DN1CCBL-DH6t	F1DN1CCBL-CPN6t
Description	TAA DP/USB/AUD SKVM Cable, DP M/M; USB A/B, 6 ft. (1.8m)	TAA DP/USB/AUD SKVM Cable, DP M/M; USB A/B, 10 ft. (3m)	TAA MDP to DP/USB/AUD Cable, VID M/M; USB A/B, 6 ft. (1.8m)	TAA MDP to DP/USB/AUD Cable, DP M/MDP M; USB A/B, 10 ft. (3m)	TAA HDMI/USB/AUD Cable, HDMI M/M; USB A/B, 6 ft. (1.8m)	TAA HDMI/USB/AUD Cable, HDMI M/M; USB A/B, 10 ft. (3m)	TAA DVI to HDMI/USB/AUD Cable, VID M/M; USB A/B, 6 ft. (1.8m)	TAA Dock USB-C to DP/USB-B Cables w/RJ45/Power, 9 ft. (2.7m)
SKVM PC Connection Combo	DVI to HDMI	VGA to HDMI						
Part Number	F1DN1CCBL-DH10t	F1DN1CCBL-VH-10						
Description	TAA DVI to HDMI/USB/AUD Cable, VID MM; USB A/B, 10 ft. (3m)	VGA to HDMI/USB/AUD Cable VGA/ HDMI MM, USB A/B, 10 ft. (3m)						
Dual-Output PC								
SKVM PC Connection Combo	DP to DP	DP to DP	mDP to DP	mDP to DP	HDMI to HDMI and DP to DP	HDMI to HDMI and DP to DP	HDMI to HDMI and DP to DP	DVI to HDMI and DP to DP
Part Number	F1D9020b06t	F1D9020b10t	F1DN2CCBL-MP6t	F1DN2CCBL-MP10t	F1DN2CC-HHPP1t	F1DN2CC-HHPP6t	F1DN2CC-HHPP10t	F1DN2CC-DHPP6t
Description	TAA Dual DP/USB/AUD SKVM Cable, DP M/M; USB A/B, 6 ft. (1.8m)	TAA Dual DP/USB/AUD SKVM Cable, DP M/M; USB-A/-B, 10 ft. (3m)	TAA (2) MDP to DP/USB/AUD Cable, VID M/M; USB-A/-B, 6 ft. (1.8m)	TAA (2) MDP to DP/USB/AUD Cable, VID M/M; USB-A/-B, 10 ft. (3m)	TAA (1) HDMI-HDMI (1) DP-DP/USB/AU Cable, 1 ft. (0.3m)	TAA (1) HDMI-HDMI (1) DP-DP/USB/AU Cable, 6 ft. (1.8m)	TAA (1) HDMI-HDMI (1) DP-DP/USB/AU Cable, 10 ft. (3m)	TAA (1) DVI to HDMI (1) DP to DP/USB/AUD Cable, 6 ft. (1.8m)
SKVM PC Connection Combo	DVI to HDMI	HDMI to HDMI	HDMI to HDMI	DVI to HDMI	DVI to HDMI	USB-C to DP		
Part Number	F1DN2CC-DHPP10t	F1DN2CCBL-HH6t	F1DN2CCBL-HH10t	F1DN2CCBL-DH6t	F1DN2CCBL-DH10t	F1DN2CCBL-CPN6t		
Description	TAA (1) DVI to HDMI (1) DP to DP/USB/AUD Cable, 10 ft. (3m)	TAA Dual HDMI/USB/AUD Cable, HDMI M/M; USB-A/-B, 6 ft. (1.8m)	TAA Dual HDMI/USB/AUD Cable, HDMI M/M; USB A/B, 10 ft. (3m)	TAA (2) DVI to HDMI/USB/AUD Cable, VD MM; USB A/B, 6 ft. (1.8m)	TAA (2) DVI to HDMI/USB/AUD Cable, VD MM; USB A/B, 10 ft. (3m)	TAA Dock USB-C to (2) DP/USB-B Cables w/ RJ45/power, 9 ft. (2.7m)		
Video Cables								
SKVM to Monitor Video Cables	DP to DP	DP to DP	mDP to DP	mDP to DP	HDMI to HDMI	HDMI to HDMI	DVI to HDMI	DVI to HDMI
Part Number	F1DN1VCBL-PP6t	F1DN1VCBL-PP10t	F1DN1VCBL-MP6t	F1DN1VCBL-MP10t	F1DN1VCBL-HH6t	F1DN1VCBL-HH10t	F1DN1VCBL-DH6t	F1DN1VCBL-DH10t
Description	TAA DP/DP Video Cable, DP M/M; 6 ft. (1.8m)	TAA DP/DP Video Cable, DP M/M; 10 ft. (3m)	TAA MDP/DP Video Cable, mDP M/DP M; 6 ft. (1.8m)	TAA MDP/DP Video Cable, mDP M/DP M; 10 ft. (3m)	TAA HDMI/HDMI SKVM Video Cable, HDMI M/M; 6 ft. (1.8m)	TAA HDMI/HDMI SKVM Video Cable, HDMI M/M; 10 ft. (3m)	TAA HDMI/DVI SKVM Video Cable, HDMI M/DVI M; 6 ft. (1.8m)	TAA HDMI/DVI SKVM Video Cable, HDMI M/DVI M; 10 ft. (3m)
Accessory Cables								
Other Cables/Adapters	CAC	CAC	USB/Audio	USB/Audio	DCU			
Part Number	F1D9013b06t	F1D9013b10t	F1D9022b06t	F1D9022b10t	F1D9026-50			
Description	TAA USB-A to USB-B Cable for CAC Reader, 6 ft. (1.8m)	TAA USB-A to USB-B Cable for CAC Reader, 10 ft. (3m)	TAA USB Keyboard/Mouse/ Audio Combo Cable, 6 ft. (1.8m)	TAA USB Keyboard/Mouse/ Audio Combo Cable, 10 ft. (3m)	RJ25 Extension for DCU, 50 ft. (15.24m)			



# Universal DisplayPort Secure KVM Series

The Belkin Universal DisplayPort Secure KVM line is the ideal solution for systems using high-performance DisplayPort graphics outputs as well as monitor inputs. The platform is fully compatible with DisplayPort connections supporting resolutions of UHD 4K@60Hz. To further enhance security, our SKVM limits input/output ports to prevent unauthorized use. Customizable port coloring and naming on the front panel facilitates channel identification, situational awareness and reduces operator errors.

Belkin's Universal DisplayPort SKVM Series is available in three configurations: with CAC, without CAC and with CAC and USB-C. For CAC, optical data diodes on all USB connections ensure unidirectional data flow of HID filtered information. Dedicated Common Access Card input ports consolidate the number of CAC readers and allow a single reader to be shared across all connected systems for user authentication. CAC models feature CAC freeze to allow a user to lock CAC on a given channel while using another channel for keyboard, mouse and video.

Designed for the ultimate in user experience, Belkin SKVMs are compatible with the optional Belkin SKVM Remote Control with Integrated Keyboard. Using configurable channel designator lighting, the front panel and remote control provide visual indication as to the security enclave the operator is working on, eliminating potential user errors. Unique mechanical design accommodates desktop mounting with an optional bracket to further declutter the desk and enhance ergonomics and efficiency.



# Universal DisplayPort SKVM Series with CAC

Choose from 6 different models.



**Universal DisplayPort Secure KVM Switch,  
2-Port Single Head w/ CAC**

F1DN102KVM-DC-4



**Universal DisplayPort Secure KVM Switch,  
4-Port Single Head w/ CAC**

F1DN104KVM-DC-4



**Universal DisplayPort Secure KVM Switch,  
8-Port Single Head w/ CAC**

F1DN108KVM-DC-4



**Universal DisplayPort Secure KVM Switch,  
2-Port Dual Head w/ CAC**

F1DN202KVM-DC-4



**Universal DisplayPort Secure KVM Switch,  
4-Port Dual Head w/ CAC**

F1DN204KVM-DC-4



**Universal DisplayPort Secure KVM Switch,  
8-Port Dual Head w/ CAC**

F1DN208KVM-DC-4

# Universal DisplayPort SKVM Series with CAC and USB-C

Choose from 2 different models.



**Universal DisplayPort Secure KVM Switch,  
4-Port Single Head, w/CAC and USB-C**

F1DN104KVMDCU-4



**Universal DisplayPort Secure KVM Switch,  
4-Port Dual Head, w/CAC and USB-C**

F1DN204KVMDCU-4



# Universal DisplayPort SKVM Series without CAC

Choose from 4 different models.



**Universal DisplayPort Secure KVM Switch,  
2-Port Single Head without CAC**

F1DN102KVM-D-4

\*Reference base SKU F1DN102KVM-DC-4 for NIAP compliance



**Universal DisplayPort Secure KVM Switch,  
4-Port Single Head without CAC**

F1DN104KVM-D-4

\*Reference base SKU F1DN104KVM-DC-4 for NIAP compliance



**Universal DisplayPort Secure KVM Switch,  
2-Port Dual Head without CAC**

F1DN202KVM-D-4

\*Reference base SKU F1DN202KVM-DC-4 for NIAP compliance



**Universal DisplayPort Secure KVM Switch,  
4-Port Dual Head without CAC**

F1DN204KVM-D-4

\*Reference base SKU F1DN204KVM-DC-4 for NIAP compliance

- Designed for use on government and military networks configured to meet NIAP Protection Profile PSD 4.0.
- Situational awareness: Convenient preconfigured port coloring ensures front panel facilitates channel identification, reducing operator errors:
  - 2-Port KVMs: 1=green 2=red
  - 4-Port KVMs: 1=green 2=white 3=red 4=white
  - 8-port KVMs: 1=green 2=white 3=red 4=white 5-8=white

- Innovations for optimal user experience: Compatible with the Belkin SKVM Remote Control with Integrated Keyboard, delivering the ultimate solution for decluttering the desk while enhancing the operator's awareness of the security domain they're working in.
- True data path isolation: Optical data diodes prevent peripherals from being used to breach systems.
- Tamper-proof system: Always-on, battery-backed, active anti-tamper circuit protects the unit from a breach while in transit and after deployment.
- TAA-compliant: Assembled in the USA, U.S.-based technical support, secure packaging ensures integrity from factory to user site.



# Universal DisplayPort SKVMs

Universal DisplayPort SKVM							
Part Number	F1DN102KVM-DC-4 (W/CAC)	F1DN102KVM-D-4	F1DN202KVM-DC-4 (W/CAC)	F1DN202KVM-D-4	F1DN104KVM-DC-4 (W/CAC)	F1DN104KVM-D-4	F1DN104KVMDCU-4 (W/CAC)
No. of Computers	2	2	2	2	4	4	4
No. of Displays	1	1	2	2	1	1	1
CAC Freeze	Yes	No	Yes	No	Yes	No	Yes
Front Panel Illumination / Multi Color	Yes - Port 1: Green; Port 2: Red				Yes - Port 1: Green; Port 2: White; Port 3: Red; Port 4: White		
Belkin Remote Control with Integrated Keyboard Compatible	Yes						
Console Ports (Devices)							
Console Mouse and Keyboard Ports	USB Type-A female connector (1 designated port for mouse and 1 designated port for keyboard) with status indicator lights						
Console Audio	Digital audio supported via DisplayPort connection on compatible monitor(s). Refer to monitor manufacturer's manual to confirm compatibility.						
Console Remote Control Port	RJ14 female						
Console CAC/DPP Port	USB Type-A female connector						
Console Video Port	DisplayPort connector						
Max Resolution Supported	3840 x 2160 pixels (UHD 4K)@ 60Hz						
Computer Ports							
Computer Audio	Digital audio supported via DisplayPort connection on compatible monitor(s). Refer to computer manufacturer's manual to confirm compatibility.						
Computer Keyboard/Mouse Port	USB Type-B						
Computer Video Port	DisplayPort connector; USB-C for USB-C models						
Physical							
Dimensions	12.6 (W) x 6.17 (D) x 2.64 (H) in. / 320.0 (W) x 156.8 (D) x 67.1 (H) mm		12.6 (W) x 6.17 (D) x 2.64 (H) in. / 320.0 (W) x 156.8 (D) x 67.1 (H) mm		12.6 (W) x 6.17 (D) x 2.64 (H) in. / 320.0 (W) x 156.8 (D) x 67.1 (H) mm		
Weight	4.93 lbs. (2.24kg.)		5.37 lbs. (2.44kg.)		5.16 lbs. (2.34kg.)		
Power							
Power Requirements	12VDC, 2.5A						
AC Input	100-240VAC						
Power Type	External with WW mains connectors						
Environmental							
Operating Temperature	32° to 104° F (0° to 40° C) for video and USB						
Storage Temperature	-4° to 140° F (-20° to 60° C)						
Humidity Storage and Use	0-80% RH, non-condensing						
Certification							
Security Accreditation	NIAP Protection Profile PSD Ver. 4.0, Audio Input v 1.0., Keyboard/Mouse 1.0., Video/Dsplay v 1.0, User Authentication (by model); TEMPEST variants available via an SDIP-55, NATO accredited TEMPEST test facility.						
Regulatory Compliance	FCC Class A, CE, UL, ICES, RCM, RoHS, UKCA						
General Information							
Made in	Designed in California. Assembled in USA with USA-based technical support (TAA compliant).						
Product Life Cycle	5 years						
Warranty	3 years standard (upgradeable to 4 or 5 years)						
Enclosure	Formed steel						

[illegible]

# Accessories

Universal DisplayPort SKVM Accessories				
F1DN008KBD	F1DN-MOD-REM2	F1DN-MOD-REM4	F1DN-MOD-REM8	F1DN-MOD-REXT-4
SKVM Remote Control w/Integrated Keyboard	SKVM/SKM Remote Control, 2-Port	SKVM/SKM Remote Control, 4-Port	SKVM/SKM Remote Control, 8-Port	Remote Control Extension Cable, 4 ft. (1.2m)
F1DN-KVM-REM2	F1DN-KVM-REM4	F1DN-KVM-REM8	F1DN005U	F1DN008U
Universal SKVM/SKM Remote Control, 2-Port	Universal SKVM/SKM Remote Control, 4-Port	Universal SKVM/SKM Remote Control, 8-Port	CAC Reader	CAC Reader
F1DN-KVM-EXTC6	F1DN-KVM-EXRC6	F1DN-KVM-EXTC6X	F1DN-KVM-EXRC6X	F1DN-KVM-EXTFI
KVM Host Side CAT6 Extender - Universal Video	KVM Console Side CAT6 Extender - Universal Video	KVM Host Side CAT6 Extender - Universal Video	KVM Console Side CAT6 Extender - Universal Video	KVM Host Side Fiber Extender - Universal Video
F1DN-KVM-EXRFI	F1DN-USB-XTRC	F1DN-WSMOUNT	8100-00297	8100-00279
KVM Console Side Fiber Extender - Universal Video	Extender Copper CAT6 USB Transmitter and Receiver	Work Surface Mount for SKVM/SKM	Rackmount Ears for Single/Dual Head 8-Port & Single Head 16-Port SKVM	Rackmount Ears for Single Head 8-Port SKVM

Universal DisplayPort SKVM Replacement Parts
0401-00853
Power Adapter Kit, 12V/2.5A with WW Mains Connector for Universal Series 2- & 4-Port SKVM
6000-01356
Power Cord Kit, WW Mains Connector for Universal Series 8- & 16-Port SKVM



# DisplayPort DuoClave Secure KVMs

Belkin DuoClave Secure KVMs allow you to extend the desktop while maintaining consolidated control between computers at different security enclaves. Traditional SKVMs permit access to one network at a time from one or two monitors. DuoClave enables secure management of two networks simultaneously from two independent displays. Users can securely switch between four or eight computer sources while simultaneously viewing two networks on different displays. These switches are commonly referred to as 4 by 2 or 8 by 2 matrix switches.

Customizable port coloring and naming on the front panel of the Belkin SKVM facilitates channel identification, situational awareness, and reduces operator errors. To enable rapid deployment and administrator efficiencies, our SKVM series includes preprogrammed colors: for 4- & 8-port SKVMs, port 1 is green, port 2 is white, port 3 is red and all others are white. The colors are changeable from a color palette with nine options.

Choose from 2 different models.



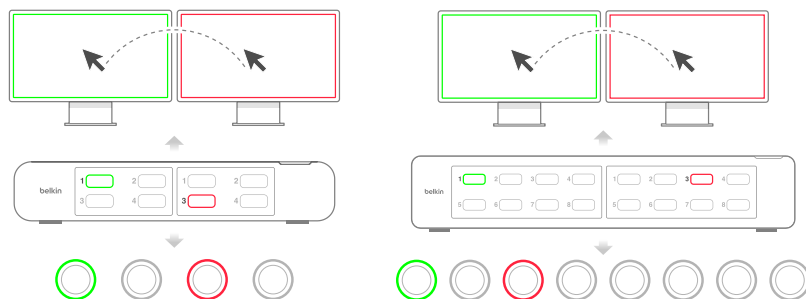
**4:2 DisplayPort DuoClave Secure KVM with CAC**  
F1DN104MKVMDC-4



**8:2 DisplayPort DuoClave Secure KVM with CAC**  
F1DN108MKVMDC-4

## Use Case Diagram.

Simultaneously access and display two networks at once on one or two monitors for unmatched efficiency and workflow.



- Designed for use on government and military networks configured to meet NIAP Protection Profile PSD 4.0
- Securely multitask: Efficiently manage and view two active networks simultaneously from two displays
- Situational awareness: Convenient preconfigured port coloring ensures front panel facilitates channel identification, reducing operator errors (for 4- and 8-port SKVMs, port 1 is green, port 2 is white, port 3 is red and all others are white)
- Key Press Seamless Cursor Switching (KPSCS): Keyboard control follows mouse as cursor crosses one physical display to the other with a keyboard key held down
- Lag-free, real-time switching: Hardware-based solution eliminates keyboard and mouse delay when switching between ports, offering a fluid and intuitive user experience
- True data path isolation: Optical data diodes prevent peripherals from being used to breach systems
- Innovations for optimal user experience: Compatible with the optional Belkin SKVM Remote Control series including our 4- and 8-Port variants, delivering the ultimate solution for decluttering the desk while enhancing the operator's awareness of the security domain they're working in
- Tamper-proof system: Always-on, battery-backed, active anti-tamper circuit protects the unit from a breach while in transit and after deployment
- TAA-compliant
- Assembled in the USA
- U.S.-based technical support
- Secure packaging ensures integrity from factory to user site



# DisplayPort DuoClave SKVMs

DisplayPort DuoClave SKVM		
Part Number	F1DN104MKVMDC-4	
No. of Computers	4	8
No. of Displays	Up to 2	Up to 2
CAC Freeze	Yes	Yes
Front Panel Illumination / Multi Color	Yes - Port 1: Green; Port 2: White; Port 3: Red; Port 4: White	Yes - Port 1: Green; Port 2: White; Port 3: Red; Ports 4-8: White
Console Ports (Devices)		
Console Mouse and Keyboard Ports	USB Type-A female connector (1 designated port for mouse and 1 designated port for keyboard) with status indicator lights	
Console Audio	Digital audio supported via DisplayPort connection on compatible monitor(s). Refer to monitor manufacturer's manual to confirm compatibility.	
Console Remote Control Port	RJ14 female	
Console CAC/DPP Port	USB Type-A female connector	
Console Video Port	DisplayPort connector	
Max Resolution Supported	3840 x 2160 pixels (UHD 4K)@ 60Hz	
Computer Ports		
Computer Audio	Digital audio supported via DisplayPort connection on compatible monitor(s). Refer to computer manufacturer's manual to confirm compatibility.	
Computer Keyboard/Mouse Port	USB Type-B	
Computer Video Port	DisplayPort connector	
Physical		
Dimensions	12.6 (W) x 6.17 (D) x 2.64 (H) in. / 320.0 (W) x 156.8 (D) x 67.1 (H) mm	17.2 (W) x 1.6 (H) x 8.1 (D) in. / 436.9 (W) x 40.6 (H) x 205.7 (D) mm
Weight	5.6 lbs. (2.54kg.)	11.7 lbs. (5.31kg.)
Power		
Power Requirements	12VDC, 2.5A	12V, 4.0A DC
AC Input	100-240VAC	
Power Type	External with WW mains connectors	Internal with WW mains connectors on power cord
Environmental		
Operating Temperature	32° to 104° F (0° to 40° C) for video and USB	
Storage Temperature	-4° to 140° F (-20° to 60° C)	
Humidity Storage and Use	0-80% RH, non-condensing	
Certification		
Security Accreditation	NIAP Protection Profile PSD Ver. 4.0, Audio Input v 1.0., Keyboard/Mouse 1.0., Video/Dsplay v 1.0, User Authentication (by model); TEMPEST variants available via an SDIP-55, NATO accredited TEMPEST test facility.	
Regulatory Compliance	FCC Class A, CE, UL, ICES, RCM, RoHS, UKCA	
General Information		
Made in	Designed in California. Assembled in USA with USA-based technical support (TAA compliant).	
Product Life Cycle	5 years	
Warranty	3 years standard (upgradeable to 4 or 5 years)	
Enclosure	Formed steel	



# Accessories

DisplayPort DuoClave SKVM Accessories				
F1DN-KVM-REM4	F1DN-KVM-REM8	F1DN-KVM-REM4DC	F1DN-KVM-REM8DC	F1DN005U
Universal SKVM/SKM Remote Control, 4-Port	Universal SKVM/SKM Remote Control, 8-Port	DuoClave SKVM Remote Control, 4-Port	DuoClave SKVM Remote Control, 8-Port	CAC Reader
F1DN008U	F1DN-KVM-EXTC6	F1DN-KVM-EXRC6	F1DN-KVM-EXTC6X	F1DN-KVM-EXRC6X
CAC Reader	KVM Host Side CAT6 Extender - Universal Video	KVM Console Side CAT6 Extender - Universal Video	KVM Host Side CAT6 Extender - Universal Video	KVM Console Side CAT6 Extender - Universal Video
F1DN-KVM-EXTFI	F1DN-KVM-EXRFI	F1DN-USB-XTRC	F1DN-WSMOUNT	8100-00297
KVM Host Side Fiber Extender - Universal Video	KVM Console Side Fiber Extender - Universal Video	Extender Copper CAT6 USB Transmitter and Receiver	Work Surface Mount for SKVM/SKM	Rackmount Ears for Single/Dual Head 8-Port & Single Head 16-Port SKVM

Universal DisplayPort SKVM Replacement Parts				
0401-00853				
Power Adapter Kit, 12V/2.5A with WW Mains Connector for Universal Series 2- & 4-Port SKVM				
6000-01356				
Power Cord Kit, WW Mains Connector for Universal Series 8- & 16-Port SKVM				



# DisplayPort MultiClave Secure KVMs

Belkin MultiClave Secure KVM technology outpaces the functionality of traditional SKVMs that only allow access to one network at a time from 1-2 monitors. MultiClave uses 1-2 monitors to provide a large active screen display with up to 8 hosts. Users select a single or a dual display setup and additional viewable layouts can be accessed with the press of a button. These switches are commonly referred to as 4 by 2 or 8 by 2 multiviewer switches.

MultiClave provides complete situational awareness of all enclaves connected as all sources display their video outputs simultaneously. Users have full view of changes on any screen in real time and can instantly make any desired screen interactive with their keyboard and mouse.

Belkin MultiClaves are designed for systems using high-performance DisplayPort graphic outputs as well as monitor inputs. These platforms are fully compatible with DisplayPort connections supporting resolutions of UHD 4K@30Hz.

## Choose from 2 different models.



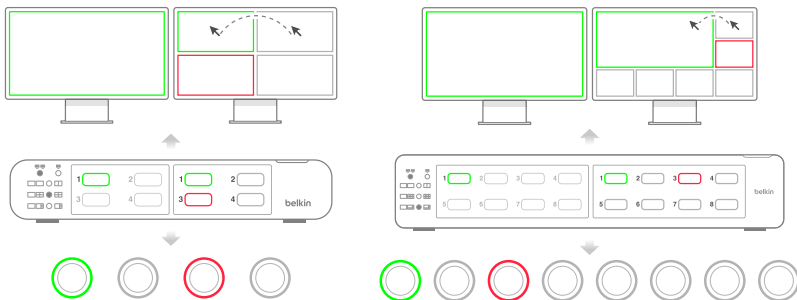
**4:2 DisplayPort MultiClave Secure KVM with CAC**  
F1DN104MVKVMDC4



**8:2 DisplayPort MultiClave Secure KVM with CAC**  
F1DN108MVKVMDC4

## Use Case Diagram.

Use 1-2 monitors to provide a large active screen display and 12 predefined multiple screen layouts.



- Designed for use on government and military networks configured to meet NIAP Protection Profile PSD 4.0
- Securely multitask: Efficiently manage and view up to eight active networks simultaneously from two displays
- Situational awareness: Convenient preconfigured port coloring ensures front panel facilitates channel identification, reducing operator errors (for 4- and 8-port SKVMs, port 1 is green, port 2 is white, port 3 is red and all others are white)
- Key Press Seamless Cursor Switching (KPSCS): Keyboard control follows mouse as cursor crosses one enclave to the other with a keyboard key held down
- Lag-free, real-time switching: Hardware-based solution eliminates keyboard and mouse delay when switching between ports, offering a fluid and intuitive user experience
- True data path isolation: Optical data diodes prevent peripherals from being used to breach systems
- Innovations for optimal user experience: Compatible with the optional Belkin SKVM Remote Control series including our 4- and 8-port variants, delivering the ultimate solution for decluttering the desk while enhancing the operator's awareness of the security domain they're working in
- Tamper-proof system: Always-on, battery-backed, active anti-tamper circuit protects the unit from a breach while in transit and after deployment
- TAA-compliant
- Assembled in the USA
- U.S.-based technical support
- Secure packaging ensures integrity from factory to user site

# DisplayPort MultiClave SKVMs

DisplayPort MultiClave SKVM		
Part Number	F1DN104MVKVMDC4	F1DN108MVKVMDC4
No. of Computers	4	8
No. of Displays	Up to 2	Up to 2
CAC Freeze	Yes	Yes
Front Panel Illumination / Multi Color	Yes - Port 1: Green; Port 2: White; Port 3: Red; Port 4: White	Yes - Port 1: Green; Port 2: White; Port 3: Red; Ports 4-8: White
Console Ports (Devices)		
Console Mouse and Keyboard Ports	USB Type-A female connector (1 designated port for mouse and 1 designated port for keyboard) with status indicator lights	
Console Audio	Digital audio supported via DisplayPort connection on compatible monitor(s). Refer to monitor manufacturer's manual to confirm compatibility.	
Console Remote Control Port	RJ14 female	
Console CAC/DPP Port	USB Type-A female connector	
Console Video Port	DisplayPort connector	
Max Resolution Supported	3840 x 2160 pixels (UHD 4K)@ 30Hz	
Computer Ports		
Computer Audio	Digital audio supported via DisplayPort connection on compatible monitor(s). Refer to computer manufacturer's manual to confirm compatibility.	
Computer Keyboard/Mouse Port	USB Type-B	
Computer Video Port	DisplayPort connector	
Physical		
Dimensions	12.6 (W) x 6.17 (D) x 2.64 (H) in. / 320.0 (W) x 156.8 (D) x 67.1 (H) mm	17.2 (W) x 1.6 (H) x 8.1 (D) in. / 436.9 (W) x 40.6 (H) x 205.7 (D) mm
Weight	5.6 lbs. (2.54kg.)	11.7 lbs. (5.31kg.)
Power		
Power Requirements	12VDC, 2.5A	12V, 4.0A DC
AC Input	100-240VAC	
Power Type	External with WW mains connectors	Internal with WW mains connectors on power cord
Environmental		
Operating Temperature	32° to 104° F (0° to 40° C) for video and USB	
Storage Temperature	-4° to 140° F (-20° to 60° C)	
Humidity Storage and Use	0-80% RH, non-condensing	
Certification		
Security Accreditation	NIAP Protection Profile PSD Ver. 4.0, Audio Input v 1.0., Keyboard/Mouse 1.0., Video/Dsplay v 1.0, User Authentication (by model); TEMPEST variants available via an SDIP-55, NATO accredited TEMPEST test facility.	
Regulatory Compliance	FCC Class A, CE, UL, ICES, RCM, RoHS, UKCA	
General Information		
Made in	Designed in California. Assembled in USA with USA-based technical support (TAA compliant).	
Product Life Cycle	5 years	
Warranty	3 years standard (upgradeable to 4 or 5 years)	
Enclosure	Formed steel	

# Accessories

## DisplayPort MultiClave SKVM Accessories

F1DN-KVM-REM4	F1DN-KVM-REM8	F1DN-KVM-REM4MC	F1DN-KVM-REM8MC	F1DN005U
Universal SKVM/SKM Remote Control, 4-Port	Universal SKVM/SKM Remote Control, 8-Port	MultiClave SKVM Remote Control, 4-Port	MultiClave SKVM Remote Control, 8-Port	CAC Reader
F1DN008U	F1DN-KVM-EXTC6	F1DN-KVM-EXRC6	F1DN-KVM-EXTC6X	F1DN-KVM-EXRC6X
CAC Reader	KVM Host Side CAT6 Extender - Universal Video	KVM Console Side CAT6 Extender - Universal Video	KVM Host Side CAT6 Extender - Universal Video	KVM Console Side CAT6 Extender - Universal Video
F1DN-KVM-EXTFI	F1DN-KVM-EXRFI	F1DN-USB-XTRC	F1DN-WSMOUNT	8100-00297
KVM Host Side Fiber Extender - Universal Video	KVM Console Side Fiber Extender - Universal Video	Extender Copper CAT6 USB Transmitter and Receiver	Work Surface Mount for SKVM/SKM	Rackmount Ears for Single/Dual Head 8-Port & Single Head 16-Port SKVM

## Universal DisplayPort SKVM Replacement Parts

0401-00853
Power Adapter Kit, 12V/2.5A with WW Mains Connector for Universal Series 2- & 4-Port SKVM
6000-01356
Power Cord Kit, WW Mains Connector for Universal Series 8- & 16-Port SKVM

# Cables

Universal DisplayPort, DuoClave & MultiClave SKVMs

Single-Output PC					
SKVM PC Connection Combo	DP to DP	DP to DP	mDP to DP	mDP to DP	USB-C to DP
Part Number	FID9019b06t	FID9019b10t	FIDN1CCBL-MP6t	FIDN1CCBL-MP10t	FIDN1CCBL-CPN6t
Description	TAA DP/USB/AUD SKVM cable, DP M/M; USB A/B, 6 ft. (1.8m)	TAA DP/USB/AUD SKVM cable, DP M/M; USB A/B, 10 ft. (3m)	TAA MDP to DP/USB/AUD Cable, VID M/M; USB A/B, 6 ft. (1.8m)	TAA MDP to DP/USB/AUD Cable, DP M/MDP M; USB A/B, 10 ft. (3m)	TAA Dock USB-C to DP/USB-B Cables w/RJ45/Power, 9 ft. (2.7m)
Dual-Output PC					
SKVM PC Connection Combo	DP to DP	DP to DP	mDP to DP	mDP to DP	USB-C to DP
Part Number	FID9020b06t	FID9020b10t	FIDN2CCBL-MP6t	FIDN2CCBL-MP10t	FIDN2CCBL-CPN6t
Description	TAA Dual DP/USB/AUD SKVM Cable, DP M/M; USB A/B, 6 ft. (1.8m)	TAA Dual DP/USB/AUD SKVM Cable, DP M/M; USB-A/-B, 10 ft. (3m)	TAA (2) MDP to DP/USB/AUD Cable, VID M/M; USB-A/-B, 6 ft. (1.8m)	TAA (2) MDP to DP/USB/AUD Cable, VID M/M; USB-A/-B, 10 ft. (3m)	TAA Dock USB-C to (2) DP/USB-B Cables w/ RJ45/power, 9 ft. (2.7m)
Video Cables					
SKVM to Monitor Video Cables	DP to DP	DP to DP	DP to DP	DP to HDMI	DP to HDMI
Part Number	FIDN1VCBL-PP6t	FIDN1VCBL-PP10t	FIDN1VCBLF-PP6t	FIDN1VCBL-PH6t	FIDN1VCBL-PH10t
Description	TAA DP/DP Video Cable, DP M/M; 6 ft. (1.8m)	TAA DP/DP Video Cable, DP M/M; 10 ft. (3m)	TAA DP/DP SKVM FERRITE CBL, DP M/M; 6 ft. (1.8m)	TAA DP/HDMI SKVM VIDEO CBL, DP M/HDMI M; 6 ft. (1.8m)	TAA DP/HDMI SKVM VIDEO CBL, DP M/HDMI M; 10 ft. (3m)
SKVM to Monitor Video Cables	mDP to DP	mDP to DP	HDMI to HDMI	HDMI to HDMI	HDMI to HDMI
Part Number	FIDN1VCBL-MP6t	FIDN1VCBL-MP10t	FIDN1VCBL-HH6t	FIDN1VCBL-HH10t	FIDN1VCBLF-HH6t
Description	TAA MDP/DP Video Cable, mDP M/DP M; 6 ft. (1.8m)	TAA MDP/DP Video Cable, mDP M/DP M; 10 ft. (3m)	TAA HDMI/HDMI SKVM Video Cable, HDMI M/M; 6 ft. (1.8m)	TAA HDMI/HDMI SKVM Video Cable, HDMI M/M; 10 ft. (3m)	TAA HDMI/HDMI SKVM FERRITE CBL, HDMI M/M; 6 ft. (1.8m)



Accessory Cables					
Other Cables/Adapters	CAC	CAC	USB/Audio	USB/Audio	USB/Audio
Part Number	FID9013b06t	FID9013b10t	FID9022b06t	FID9022b10t	FIDN1USBF-6t
Description	TAA USB-A to USB-B Cable for CAC Reader, 6 ft. (1.8m)	TAA USB-A to USB-B Cable for CAC Reader, 10 ft. (3m)	TAA USB Keyboard/ Mouse/ Audio Combo Cable, 6 ft. (1.8m)	TAA USB Keyboard/ Mouse/ Audio Combo Cable, 10 ft. (3m)	TAA USB A/B SKVM FERRITE CABLE, 6 ft. (1.8m)
Other Cables/Adapters	USB-C to USB-C	USB-C to USB-C	RS232 to Mini-USB	HDMI to DP Adapter	DP to HDMI
Part Number	FIDN1CCBL-C6t	FIDN1CCBL-C10t	FIDN-KVM-REMADP	FIDN1VADP-HP	FIDN1VADP-PH
Description	TAA USBC CBL, USBC M/M; 6 ft. (1.8m)	TAA USBC CBL, USBC M/M; 10 ft. (3m)	RS232-TO-MINI USB MOD ADAPTER FOR COLOR REMOTES	TAA HDMI/DP VIDEO ADAPTER, M/F	TAA DP/HDMI VIDEO ADAPTER, M/F
Other Cables/Adapters	HDMI to HDMI	HDMI to DP	DP to DP	DP to HDMI	
Part Number	FIDN1MISO-HH	FIDN1MISO-HP	FIDN1MISO-PP	FIDN1MISO-PH	
Description	TAA HDMI/HDMI MINI VIDEO ISOLATOR, M/F	TAA HDMI/DP MINI VIDEO ISOLATOR, M/F	TAA DP/DP MINI VIDEO ISOLATOR, M/F	TAA DP/HDMI MINI VIDEO ISOLATOR, M/F	

## Why Belkin.

# 40

Years of innovation.

# 40,000

Business served.

# 460M

B2B products sold.

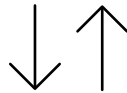
# 171

countries.

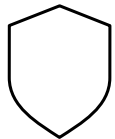
## The Belkin Difference:



USA-based  
product support.



3-year se with optional  
extension of 1-2 years.



Hassle-free  
replacement.



Exclusively produced  
in the USA with  
TAA-compliant  
accessories.

## Who we are.

At Belkin International, we create products that help people realize the power of technology and make people's lives better, easier, and more fulfilling. This has been Belkin's mission since our inception in 1983. As a leading provider of SKVM switches for mission-critical applications, we positively impact and improve worker efficiency by delivering innovation and peace of mind to users working across multiple security enclaves. Our offer is certified to the latest Common Criteria NIAP Protection Profile for Peripheral Sharing Devices version 4.0 along with all applicable modules.

**Belkin International, Inc.**  
555 S Aviation Blvd, Suite 180  
El Segundo, CA 90245-4852 USA  
(310) 751-5569  
[belkin.com/cybersecurity](http://belkin.com/cybersecurity)

**Support**  
Secure SKVM/SKM Support 800-282-2355

**Sales**  
[FederalBusinessDivision@belkin.com](mailto:FederalBusinessDivision@belkin.com)

LinkedIn:



Brochure to download:

