

# EF 35MM f/1.4LII USM

## PROFESSIONAL DETAILED IMAGE QUALITY IN LANDSCAPES & PORTRAITS

The EF 35mm f/1.4L II USM L-series lens is designed for professional photographers wanting to capture their world with a natural perspective and features the pioneering new Canon-developed lens technology, Blue Spectrum Refractive (BR) optics

### FAST f/1.4 APERTURE

For standout portraits, the fast f/1.4, nine blade aperture delivers beautiful background blur and control over depth of field, as well as enabling photographers to continue shooting as light levels start to fade

### BLUE SPECTRUM REFRACTIVE (BR) OPTICS

World's first lens to include BR optics, a new pioneering Canon-developed lens technology featuring an organic optical material, engineered at a molecular level to significantly reduce chromatic aberration and produce sharper images – via its ability to refract blue light

### 35MM FIXED FOCAL LENGTH

Perfect for capturing images with a documentary feel, using its wide 35mm fixed focal length, the EF 35mm f/1.4L II USM is the ultimate choice for photojournalists, sports and wedding photographers alike. With its wide-angle view photographers can shoot subjects in their natural habitat within the context of their environment, and without distortion

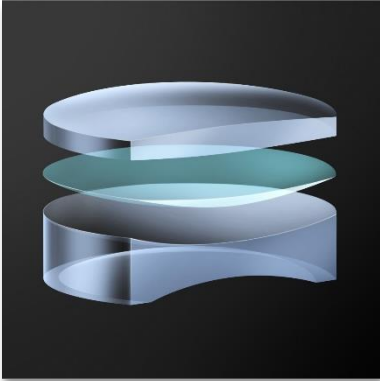


*no one sees it like you*

**Canon**

# EF 35MM f/1.4LII USM

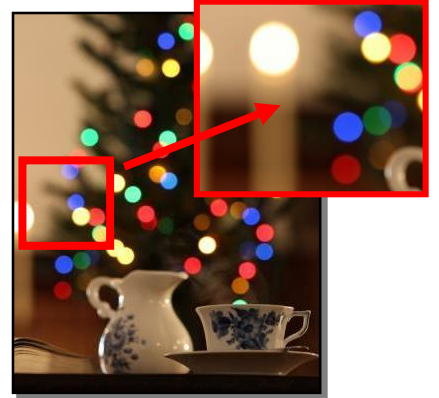
THE NEW PROFESSIONAL STANDARD



BR Optics greatly reduces colour fringing typical of large-aperture lenses and delivers excellent rendering performance even at full aperture



Dust and drip-proof construction delivers outstanding durability that can withstand use in unforgiving shooting situations



9 Blade Circular Aperture delivers beautiful bokeh – points of light in the background are almost round



Even at full aperture, high image quality is achieved from the center of the image to the peripheral areas



Reduce ghosting due to light sources within the image with Sub Wavelength Structure Coating (SWC) on the lens



Experience the high image quality achieved through the use of newly developed BR Optics plus Aspherical & UD lenses

*no one sees it like you*

**Canon**



## TECHNICAL SPECIFICATIONS

<b>EF 35MM f/1.4LII USM</b>		
<b>Optical Features/Specifications</b>		
Angle of view (horzntl, vertl, diagnl)		54°, 38°, 63°
Lens construction (elements/groups)		14/11
No. of diaphragm blades		9
Minimum aperture		22
Closest focussing distance (m)		0.28
Maximum magnification (x)		0.21
Distance Information		Yes
AF actuator		Ring USM <sup>1</sup>
<b>Physical Specifications</b>		
Dust/moisture resistance <sup>2</sup>		Yes
Filter diameter (mm)		72
Max. diameter x length (mm)		80.4 x 105.5
Weight (g)		760
<b>Accessories</b>		
Lens cap		E-72II
Lens hood		EW-77B
Lens case/pouch		LP1219
Rear cap		Lens Dust Cap E
Magnification with Extension Tube EF12 II		0.58-0.36
Magnification with Extension Tube EF25 II		1.03-0.80
Extender Compatibility		Not Compatible

<sup>1</sup> Full time Manual focus  
<sup>2</sup> Lenses with dust/moisture resistance are fitted with a rubber ring on the lens mount which may cause slight abrasion of the camera mount. This in no way effects either the lens or camera performance.

For more information visit  
[canon.com.au](http://canon.com.au)  
[canon.co.nz](http://canon.co.nz)

*no one sees it like you*

**Canon**