

PROFESSIONAL ELECTROL®

Wall or Ceiling Mounted or Ceiling Recessed Electric Projection Screen

When ordering, make appropriate selections:

1. Select size from charts at the lower right.

2. Select viewing surface:

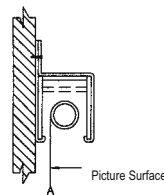
- Matte White
- GREENGUARD® and GREENGUARD® Children and Schools Certified.

3. Options:

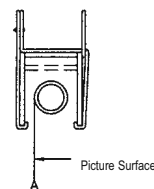
- Extra Drop available to lower picture area more than normal. Specify total drop at top _____ (black or white) or at bottom _____ (black or white). 22' maximum total surface height including picture area, except for 24' wide, where maximum drop is 18'.
- Single Motor Low Voltage Control (LVC) - external.
- Wireless Remote Control for LVC.
- Radio Frequency Remote.
- Radio Frequency Range Extender available
- Infrared Remote.
- Key Locking Cover Plate for 120V or LVC Switch.
- Key Operated Switch for 120V only (NOTE: Cannot be used with LVC).
- No Borders (Black masking borders standard).
- 220 Volt (50 Hz) Motor.
- Video Projector Interface Control - external.
- External SCB-100 - RS-232 Serial Control Board
- NET-100 Ethernet-Serial Adapter
- White box (black standard).



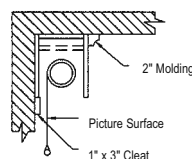
Wall Type Hanger



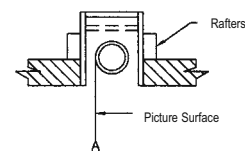
Ceiling Type Hanger



Ceiling Mount Without Hangers

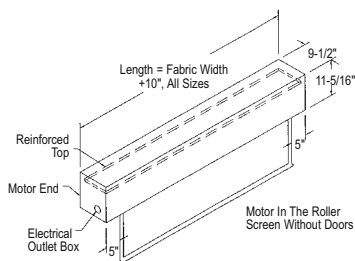


Recessed Above Ceiling

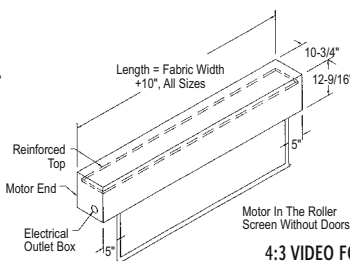


- Da-Lite's largest enclosed electric screen.
- Heavy-duty screen for exposed or recessed installation.

SCREENS UP TO 18' WIDE



SCREENS 20' AND WIDER



SUGGESTED SPECIFICATIONS:

_____ projection screen(s), _____ (H) x _____ (W), electrically operated 120 volt A.C. (60 Hz). Screen will have not more than 2.4 amp. motor. Shall have specially designed motor mounted inside the roller, to be three wire with ground, quick reversal type, oiled for life, with automatic thermal overload cutout, integral gears, capacitor and an electric brake to prevent coasting. To have preset but adjustable limit switches to automatically stop screen fabric in the "up" and "down" positions. Rigid metal roller, to be at least 3" in diameter (on screens 12' wide), 5 3/4" in diameter (on screens 14' to 18' wide) or 7" in diameter (on screens where either height or width equal or exceed 20'). Roller to be mounted in one heavy duty bracket equipped with self-aligning bearing. Motor to be secured to the case with a steel motor mount bracket. Screen surface to be flame retardant and mildew resistant fiberglass with black masking borders standard. Case to be of wood, with double top for extra rigidity and strength. Case to be finished with a black primer coat, ready to accept final finish by others, heavy metal brackets shall be supplied for mounting screen to ceiling or wall. To be complete with 3 position control switch with cover plate. Screen to be listed by Underwriter's Laboratories.



Matte White: Horizontal seam required when both dimensions exceed 16'.

DO NOT SEAL IN-ALLOW ACCESS

Recessed installation requires access to motor and screen roller.

FOR EXPOSED INSTALLATION

If the screen is to be mounted in an exposed position, it may be covered with finished plywood, veneer paneling, plastic wall covering or a valance.

Detailed dimensional drawings, wiring diagrams and installation instructions available upon request. Specifications subject to change without notice.

4:3 VIDEO FORMAT DIMENSIONS (2" standard black drop at top)

Viewing Area H x W	Nominal Diagonal	Overall Case Length	Approx. Shipping Wt. Lbs.
120" x 160"	200"	174"	250
123" x 164"	210"	178"	260
141" x 188"	240"	202"	380

16:9 HDTV FORMAT DIMENSIONS (2" standard black drop at top)

Viewing Area H x W	Nominal Diagonal	Overall Case Length	Approx. Shipping Wt. Lbs.
78" x 139"	159"	154"	259
92" x 164"	188"	178"	266
106" x 188"	216"	202"	382
119" x 212"	243"	226"	429
133" x 236"	271"	250"	835

SQUARE FORMAT DIMENSIONS

(screens with ^ have 2" standard black drop at top)

Sizes H x W	Overall Case Length	Approx. Shipping Wt. Lbs.
9' x 12'^	154"	245
12' x 12'	154"	251
10'6" x 14'^	178"	266
14' x 14'	178"	266
12' x 16'^	202"	382
16' x 16'	202"	382
13'6" x 18'^	226"	429
18' x 18'	226"	429
15' x 20'^	250"	835
20' x 20'	250"	845
11' x 22'	274"	901
16'6" x 22'^	274"	911
22' x 22'	274"	921
12' x 24'	298"	987
18' x 24'^	298"	997

Overall case length dimensions ± 1/4".

Note: Custom formats and sizes available upon request.