

LARGE ADVANTAGE® DELUXE ELECTROL®

**Concealed with Closure Doors
Electric Projection Screen**

When ordering, make appropriate selections:

1. Select size from charts below.**2.** Select viewing surface:

- Matte White
- GREENGUARD® and GREENGUARD® Children and Schools Certified.

3. Options:

- Extra Drop available to lower picture area more than normal. Specify total drop at top _____ (black or white) or at bottom _____ (black or white). 22' maximum total surface height including picture area except for 24' wide, where maximum drop is 18'.
- No borders (Black masking borders standard).
- Wireless Remote Control for LVC.
 - Radio Frequency Remote
 - Radio Frequency Range Extender available
 - Infrared Remote
- Key Locking Cover Plate for 120V Switch or LVC.
- 220/240 Volt (50 Hz) Motor.

Matte White: Horizontal seam required when both dimensions exceed 16'.

Detailed dimensional drawings, wiring diagrams and installation instructions available upon request.

Specifications subject to change without notice.

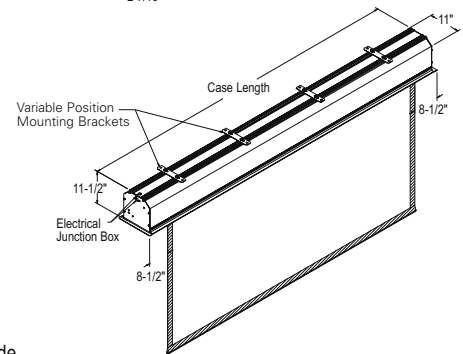
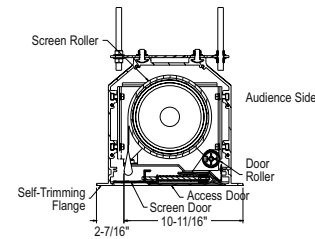
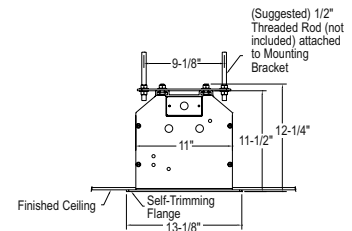


- Large venue motorized screen with automatic closure door.
- Heavy duty aluminum extruded case with white powder coated finish.
- UL Plenum rated case.

SUGGESTED SPECIFICATIONS:

_____ projection screen(s), _____ (H) x _____ (W).

Screen shall have two motors, one to operate door and one to operate screen. Door motor electrically operated 120 volt (60 Hz) not more than 1.2 amp, mounted inside the roller, to be three wire with ground, quick reversal type, oiled for life, with automatic thermal overload cutout, integral gears, capacitor and an electric brake to prevent coasting. To have pre-set but adjustable limit switches to automatically stop fabric door in the open position. The roller to be of 1.6" diameter aluminum. Screen motor is electrically operated 120 volt (60 Hz) not more than 2.4 amp, mounted inside the roller, to be three wire with ground quick reversal type, oiled for life, with automatic thermal overload cutout, integral gears, capacitor and an electric brake to prevent coasting. To have pre-set but adjustable limit switches to automatically stop picture surface in the "up" and "down" positions. Rigid metal roller, to be at least 5¾" in diameter (on screens 14' to 18' wide) or 7" in diameter (on screens where either height or width equal or exceed 20'). Screen fabric to be flame retardant and mildew resistant fiberglass with black masking borders standard. Bottom of fabric shall be formed into a pocket holding a metal rod with plastic caps. Case shall be a white powder coated aluminum extrusion. Bottom of case to be self-trimming with a built-in flange around the bottom of the case. A section of the bottom of the case shall be a retractable aluminum door that opens and closes automatically with the lowering and raising of the picture surface. The balance of the bottom of the case shall be a second aluminum door with manual opening to provide access. Junction box shall be internally integrated into the housing making it possible to install the housing and wire to the building's electrical system during construction. The junction box shall contain a quick connect connector that is mounted in the housing for easy plug-in connection to the motorized fabric and roller assembly. The motorized fabric and roller assembly to be installed in the case at the factory or at a later time at the job site. To be complete with integrated low voltage control unit and three position control switch with cover plate. Suitable for use in environmental air space in accordance with section 300-22 (c) of the National Electric Code, and sections 2-128, 12-010 (3) and 12-100 of the Canadian Electrical Code, part 1, CSA C22.1. Screen to be listed by Underwriters' Laboratories.

**4:3 VIDEO FORMAT DIMENSIONS (2" standard black drop at top)**

Viewing Area H x W	Nominal Diagonal	Overall Case Length	Approx. Shipping Wt. Lbs.
123" x 164"	210"	183½"	587
141" x 188"	240"	207½"	662
159" x 212"	265"	231½"	738
177" x 236"	295"	255½"	847

16:9 HDTV FORMAT DIMENSIONS (2" standard black drop at top)

Viewing Area H x W	Nominal Diagonal	Overall Case Length	Approx. Shipping Wt. Lbs.
106" x 188"	216"	207½"	651
119" x 212"	243"	231½"	724
133" x 236"	271"	255½"	830

SQUARE FORMAT DIMENSIONS

(screens with ^ have 2" standard black drop at top)

Sizes H x W	Overall Case Length	Approx. Shipping Wt. Lbs.
10'6" x 14'	183½"	588
14' x 14'	183½"	599
12' x 16'^A	207½"	663
16' x 16'	207½"	671
13'6" x 18'^A	231½"	738
18' x 18'	231½"	757
15' x 20'^A	255½"	847
20' x 20'	255½"	871
16'6" x 22'^A	279½"	929
22' x 22'^A	279½"	958
18' x 24'^A	303½"	1012

Overall case length dimensions ±¼".

Note: Custom formats and sizes available upon request.