



PRECISION

**5480**

Take your creativity to the next level - and look good doing it.



**DELL**Technologies



# 5480

Small, beautiful and powerful  
A thin, light and very capable 14" workstation

HD IR camera, Windows Hello compliance, Ambient light sensor

Dual array mics with noise suppression technology

Up to QHD+, 500 nits, low blue light (ComfortView Plus) display

14", 16:10, 4-sided InfinityEdge display

Top-firing speakers

Interact with Touch and pen

Bottom-facing subwoofers

Pro 2.5 keyboard

Fingerprint reader on power button

Optional Smart Card Reader

Carbon fiber palmrest

WiFi 6E

Large click pad with optional NFC reader

*\*No camera, no mic, no wireless option available for FED*

Precision cut aluminum chassis

**Dell Optimizer for Precision**

- ExpressSign-in
- ExpressConnect
- ExpressCharge
- ExpressDischarge
- ExpressResponse
- Intelligent Audio
- Reporting & Analytics

**Sustainability**

- EPEAT Gold Registered
- Recycled carbon fiber
- 100% recycled plastics & cardboard contained in packaging



**Advanced Thermals**

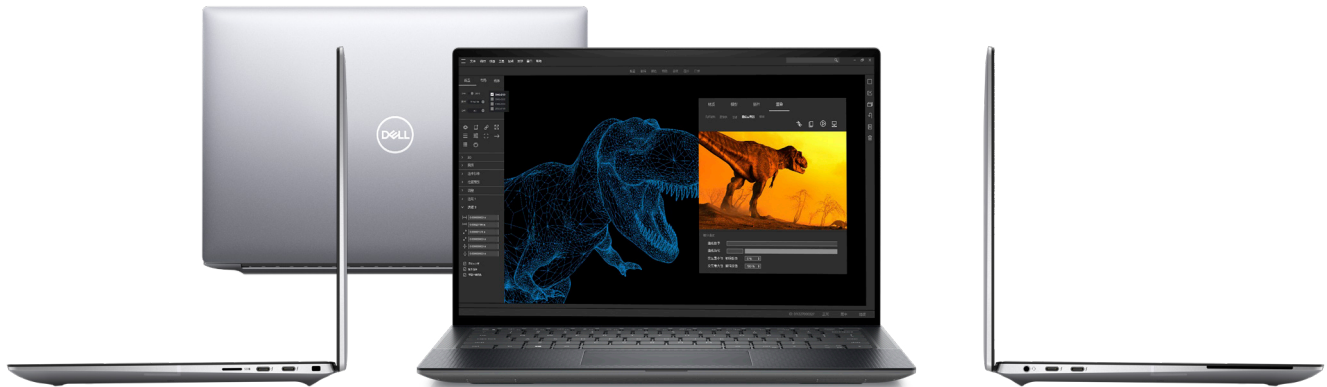
- User Selectable Thermals Tables (USTT)
- Dual Opposing Output (DOO) fan with liquid crystal polymer blades
- Dual intake venting
- GORE insulation and Graphite heat spreaders

**World's thinnest and lightest 14" workstation, starting at 3.26lbs/1.48kgs**

**Up to 130W Type-C adapter**

**72Whr battery**

# 5480



### Intelligent performance

Up to Intel® Core™, 14 Core (6P + 8E, 45W), up to 8GB Nvidia RTX 3000 Ada Generation class graphics, up to 64GB of 6000 MT/s DDR5, M.2 SSD with PCIe Gen 4 support (4TB), (4) Thunderbolt™ 4

Dell Optimizer for Precision

Advanced thermals



### Immersive productivity and design

Large clickpad, IR camera with ambient light sensor, dual mics, 4 "Grade A" speakers

14" InfinityEdge 16:10 display, up to QHD+ with pen/Touch, 100% sRGB, 500nits, PremierColor, with ComfortView Plus options

Intel WiFi 802.11ax , 6E, Bluetooth 5.2



### Mission critical reliability and security

ISV Certifications

...

MIL-STD 810H tested

...

Long battery life option

...

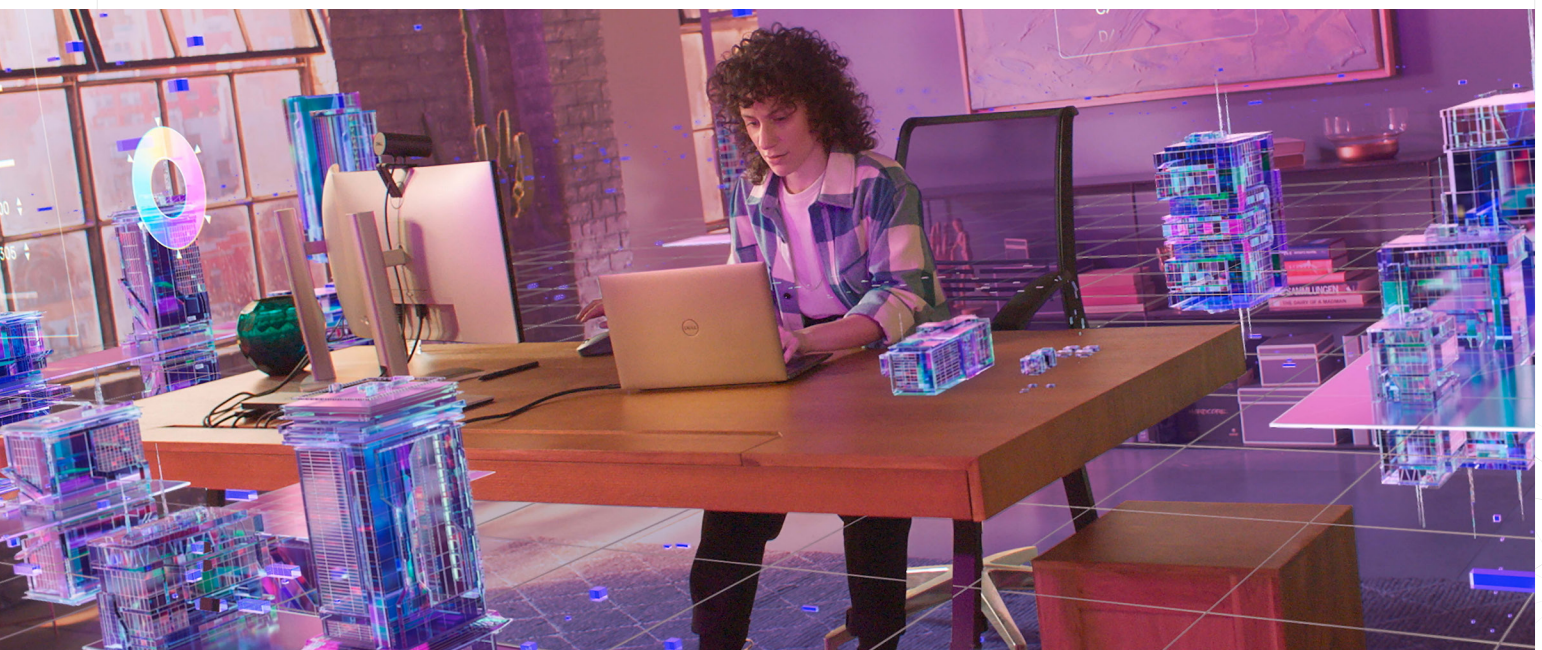
Smart Card Reader

...

Fingerprint Reader

...

IR Camera with Windows Hello and proximity sensor

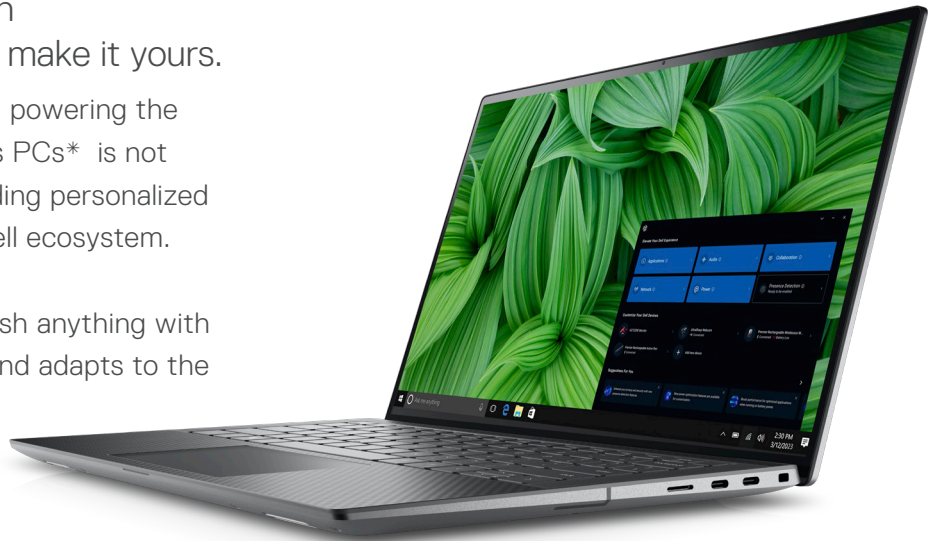


# 5480

Dell Optimizer for Precision  
We make it intelligent. You make it yours.

In a work-from-anywhere world, powering the world's most intelligent business PCs\* is not enough, Dell Optimizer is extending personalized intelligence to the rest of the Dell ecosystem.

Dell Optimizer lets you accomplish anything with built-in intelligence that learns and adapts to the way you work.



Power your productivity with personalized performance extending from your Precision to the devices within your workspace.



#### An intelligent ecosystem

Enjoy easy pairing and management of your Dell monitors and accessories with the **integration of Dell Display Manager and Dell Peripheral Manager**.



#### Intelligent analytics

Get full workload analysis to enable users to track system resource utilization for components such as processor, memory, graphics, and hard drive while you run your specific workload.



#### Improved app performance

**ExpressResponse** analyzes how you use your preferred apps to boost performance.



#### Intelligent privacy anywhere

This technology lets you texturizes your screen when an intruder is detected and dims your PC when you look away. It also wakes your PC when your approach and locks it when you walk away.



#### Unmatched connectivity

**ExpressConnect\*** provides the world's first simultaneous multinet network connection\* that joins the best network\* available.



#### Up level audio

**Intelligent Audio** delivers sound and mic enhancements reducing background noise using neural noise cancellation.



#### Extended power

**ExpressCharge** analyzes your power usage habits to improve PC battery utilization and extends run times by charging your system faster when you need a boost in power.

With Dell Optimizer, optimization and data collection follow a stringent process to ensure your privacy and security.

[Click here to learn more about Dell Optimizer.](#)

\* Based on Dell Analysis, October 2022. For more details visit Guide to Bluetooth Security <https://nvlpubs.nist.gov/nistpubs/SpecialPublications/NIST.SP.800-121r2-upd1.pdf> Dell Pair is available on select Dell accessories.



## RECOMMENDED ACCESSORIES



**Dell UltraSharp 34 Curved USB-C Hub Monitor - U3421WE**

Get immersive productivity on a 34" WQHD curved monitor with a wide color coverage and extensive connectivity including RJ45, USB-C and quick-access front ports.



**Dell Premier Rechargeable Wireless Mouse - MS7421W**

Experience a mobile mouse with best-in-class rechargeable power and productivity features in an accentuated design. Long lasting battery life of up to 6 months on a full charge.



**Dell Thunderbolt™ 4 Dock - WD22TB4**

Boost your PC's power on the world's first modular Thunderbolt™ 4 dock with a future-ready design.



**Dell Premier Wireless ANC Headset - WL7022**

Collaborate with ease anywhere with this Teams certified wireless headset which offers active noise cancellation and smart sensors that automatically mute and unmute your call.



**Dell UltraSharp Webcam - WB7022**

Elevate your video conferencing experience with the world's best image quality 4K webcam that optimizes your visuals with a large 4K Sony STARVIS™ CMOS sensor and AI Auto-Framing.



**Dell EcoLoop Pro Briefcase - CC5623**

Made with a more earth-friendly solution-dyeing process than traditional dyeing processes and shock-absorbing EVA foam that protects your laptop from impact.



**Wacom Cintiq Pro 24 Creative Pen Display Touch - DTH-2420**

Enhance your creative process with the Wacom Cintiq Pro 24. Featuring world-class color performance on one of Wacom's largest 4K screens.



**3Dconnexion SpaceMouse Wireless - 3DX-700076**

Simply push, pull, twist or tilt the 3Dconnexion controller cap to intuitively pan, zoom and rotate your 3D drawing.



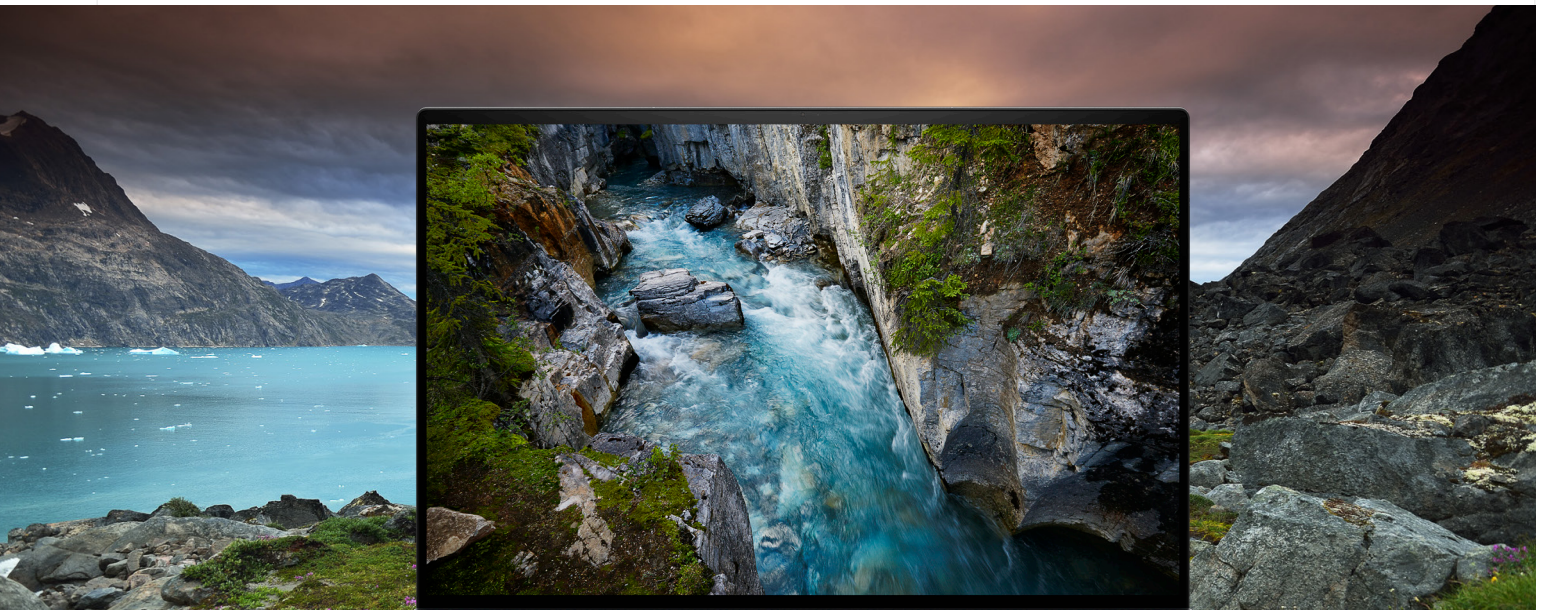
**Dell Premier Rechargeable Active Pen - PN7522W**

World's first Active Pen with a Tile location tracker providing the longest battery life on a single charge.

## Sustainability on Dell Precision workstations

Leading the industry in sustainable practices in our products, packaging and supply chain.

### PRECISION LEADS THE WORKSTATION INDUSTRY IN SUSTAINABLE DESIGN AND MATERIALS.



#### Design

# 1st

Workstations made with reclaimed carbon fiber and renewable bioplastic<sup>11</sup>.

#### Sustainable Materials

# up to 46%

Recycled plastic in fixed workstations. Up to 17% in mobile workstations.

#### Packaging Innovation

# 25%

Ocean-bound plastic trays in Precision 5000 Series packaging.

### PRECISION HAS

# 19

EPEAT registered products<sup>12</sup>



# 16

TCO 8 certified configurations



# 8.0

ENERGY STAR<sup>®</sup> throughout the portfolio



# PRECISION 5480

## FEATURE TECHNICAL SPECIFICATION

**MODEL NUMBER** Precision 5480

**PROCESSOR OPTIONS<sup>13</sup>** 13<sup>th</sup> Generation Intel® Core™ i9-13900H vPro Enterprise, Processor Cores 14, Threads 20, Cache 24MB, up to 5.40GHz  
 13<sup>th</sup> Generation Intel® Core™ i7-13800H vPro Enterprise, Processor Cores 14, Threads 20, Cache 24MB, up to Turbo 5.20GHz, E-Core Turbo 4.00GHz, P-Core Base 2.50GHz, E-Core Base 1.80GHz, Gfx Freq. 1.50GHz  
 13<sup>th</sup> Generation Intel® Core™ i7-13700H vPro Essential, Processor Cores 14, up to E-Cores 8, Threads 20, Cache 24MB, up to Turbo 5.00GHz, E-Core Turbo 3.70GHz  
 13<sup>th</sup> Generation Intel® Core™ i5-13600H vPro Enterprise, Processor Cores 12, Threads 16, Cache 18MB, up to Turbo 4.80GHz, E-Core Turbo 3.60GHz, P-Core Base 2.80GHz  
 13<sup>th</sup> Generation Intel® Core™ i5-13500H vPro Essential, Processor Cores 12, Threads 16, Cache 18MB, up to Turbo 4.70GHz.

**OPERATING SYSTEM<sup>15</sup>** Windows 11 Pro, 64-bit with DGR<sup>17</sup>  
 Windows 11 Pro National Education, 64-bit  
 Windows 11 Home, 64-bit with DGR<sup>17</sup>  
 RedHat Enterprise Linux 8.6 (64-bit)  
 Ubuntu® Linux® 22.04 (64-bit)

**MEMORY OPTIONS<sup>13,14,15</sup>** 16GB, LPDDR5, 6000 MT/s, integrated, dual-channel  
 32GB, LPDDR5, 6000 MT/s, integrated, dual-channel  
 64GB, LPDDR5, 6000 MT/s, integrated, dual-channel

**PRIMARY HARD DRIVE<sup>15, 16</sup>** M.2 2230, 256GB, PCIe NVMe Gen4 x4, Class 35 SSD  
 M.2 2280, 512GB, PCIe NVMe Gen4 x4, Class 40 SSD  
 M.2 2280, 1TB, PCIe NVMe Gen4 x4, Class 40 SSD  
 M.2 2280, 2TB, PCIe NVMe Gen4 x4, Class 40 SSD  
 M.2 2280, 4TB, PCIe NVMe Gen4 x4, Class 40 SSD  
 M.2 2280, 512GB, PCIe NVMe Gen3 x4, Class 40 SSD, self-encrypting drive  
 M.2 2280, 512GB, PCIe NVMe Gen4 x4, Class 40 SSD, self-encrypting drive  
 M.2 2280, 1TB, PCIe NVMe Gen4 x4, Class 40 SSD, self-encrypting drive

**GRAPHICS** **Integrated:**  
 Intel® Iris X® Graphics

**Discrete: (optional)**  
 NVIDIA RTX A1000 6GB, 6GB GDDR6  
 NVIDIA RTX 2000 Ada Generation, 8GB GDDR6  
 NVIDIA RTX 3000 Ada Generation, 8GB GDDR6

**DISPLAY OPTIONS<sup>15</sup>** 14-inch, 16:10 FHD+, 1920 x 1200, 60Hz, anti-glare, non-touch, 100% sRGB, 500 nits, wide-viewing angle, narrow bent, TÜV low blue light (ComfortView Plus), PremierColor  
 14-inch, 16:10 QHD+, 2560 x 1600, 60Hz, anti-reflection, touch, 100% sRGB, 500 nits, wide-viewing angle, narrow bent, TÜV low blue light (ComfortView Plus), PremierColor, active pen support

**CASE COLOR** Anodized Titan Gray

**PRODUCTIVITY SOFTWARE<sup>13</sup>** Dell Support Assist  
 DDRE (Dell Developed Recovery Environment)  
 Dell Optimizer for Precision  
 Dell Support Center  
 Intel® WiFi Direct

**SECURITY SOFTWARE<sup>13</sup>** Dell Client Command Suite  
 Optional Dell Data Security and Management Software  
 Dell BIOS Verification  
 Optional Dell Endpoint Security and Management Software  
 VMware Carbon Black Endpoint Standard  
 VMware Carbon Black Endpoint Standard + Secureworks  
 Threat Detection and Response  
 Dell Encryption Enterprise  
 Dell Encryption Personal Carbonite  
 VMware Workspace ONE  
 Absolute® Endpoint Visibility and Control Netskope  
 Dell Supply Chain Defense

**WARRANTY<sup>19, 20</sup>** 1-year hardware service with on-site/in-home service after remote diagnosis  
 2-year hardware service with on-site/in-home service after remote diagnosis  
 3-year hardware service with on-site/in-home service after remote diagnosis  
 4-year hardware service with on-site/in-home service after remote diagnosis  
 5-year hardware service with on-site/in-home service after remote diagnosis  
 1-year ProSupport with Next Business Day on-site service  
 2-year ProSupport with Next Business Day on-site service  
 3-year ProSupport with Next Business Day on-site service  
 4-year ProSupport with Next Business Day on-site service  
 5-year ProSupport with Next Business Day on-site service  
 1-year ProSupport Plus with Next Business Day on-site service

## FEATURE TECHNICAL SPECIFICATION

**WARRANTY<sup>19, 20</sup>** 2-year ProSupport Plus with Next Business Day on-site service  
 3-year ProSupport Plus with Next Business Day on-site service  
 4-year ProSupport Plus with Next Business Day on-site service  
 5-year ProSupport Plus with Next Business Day on-site service

**ACCIDENTAL DAMAGE SERVICES** 1-year Accidental Damage Service  
 2-year Accidental Damage Service  
 3-year Accidental Damage Service  
 4-year Accidental Damage Service  
 5-year Accidental Damage Service

**KEYBOARD<sup>15</sup>** Spill resistant, Available in many languages, backlit optional.

**PORTS** (4) ThunderBolt™ 4 ports with PowerDelivery and DisplayPort (USB Type-C™)  
 Headset (headphone and microphone combo) port

**SLOTS** SmartCard Reader (optional)  
 MicroSD-card slot  
 Wedge-shaped lock slot

**DIMENSIONS** **US:**  
 Height (rear): 0.43in. (11.09mm)  
 Height (peak): 0.74in. (18.95mm)  
 Height (front): 0.29in. (7.49mm)  
 Width: 12.22in. (310.60mm)  
 Depth: 8.27in. (210.35mm)  
 Weight: 3.26lb (1.48kg)

**Rest of the world:**  
 Height (rear): 11.09mm (0.43in.)  
 Height (peak): 18.95mm (0.74in.)  
 Height (front): 7.49mm (0.29in.)  
 Width: 310.60mm (12.22in.)  
 Depth: 210.30mm (8.27in.)  
 Weight: 1.48kg (3.26lb)

**CAMERA** 720p at 30 fps, HD IR Camera with ALS sensor

**AUDIO & SPEAKERS<sup>15</sup>** Stereo speakers with Dialog, 2W x 4 = 8W total

**WIRELESS** Intel® AX211, 2x2 MIMO, 2400Mbps,  
 2.40GHz/5GHz/6GHz, Wi-Fi 6E (WiFi 802.11ax), Blue-tooth® 5.2

**BATTERY** 4-cell, 72Whr "smart" lithium-ion, ExpressCharge™, optional Long Cycle Life

**POWER OPTIONS<sup>15</sup>** 100W AC adapter, USB-C (UMA only)  
 130W AC adapter, USB-C (Discrete only)

**REGULATORY<sup>18, 21</sup>** **Product Safety, EMC and Environmental Datasheets:**  
<https://www.dell.com/learn/us/en/uscorp1/product-info-datasheets-safety-emc-environmental>

**Dell Regulatory Compliance Home Page:**  
<https://www.dell.com/learn/us/en/uscorp1/regulatory-compliance?s=corp>

**Dell and the Environment:**  
<https://corporate.delltechnologies.com/en-us/social-impact/advancing-sustainability/sustainable-supply-chain/environment.htm>

**INTEL RESPONSIVENESS TECHNOLOGIES** Intel® Rapid Storage Technology

**HARDWARE SECURITY** Trusted Platform Module (TPM) 2.0 discrete  
 FIPS 140-2 certification for TPM  
 TCG Certification for TPM (Trusted Computing Group)  
 Contacted Smart Card and Control Vault 3  
 Contactless Smart Card, NFC, and ControlVault 3  
 SED SSD NVMe, SSD and HDD (Opal and non-Opal) per SDL  
 Finger Print Reader on Power Button tied to Control vault 3  
 SED (Opal 2.0 only - PCIe Interface)

**SENSORS** Ambient Light Sensor  
 IR User  
 Accelerometer  
 Adaptive Thermal Performance (Lap vs. Desk mode) requires Gyro/  
 Accelerometer (NOTE: This is for thermal only.)  
 Hall Effect Sensor

**SYSTEMS MANAGEMENT** Dell Power Manager (DPM)  
 Dell Command | Configure Version 4.0  
 Dell Command | Monitor 10.0  
 Dell Command | Update 3.0  
 Dell Command | Deploy (DCP)  
 Dell Command | Integration Suite for System Center 5.0 (DCIS) with vPro®  
 Dell Command | Intel® vPro™ Out of Band (DCIV)  
 Dell Command | PowerShell Provider 2.0  
 Dell Command | Deploy Driver Pack Catalog 1.0

\* Based on internal analysis, April 2021. Dell Optimizer available in 2020 devices, not available in OptiPlex 3000 series, Latitude 3310 2-in-1 and Latitude Chromebook Enterprise. Feature availability and functionality varies by model.

1 Based on Dell internal analysis of competitive PC performance software and applications. September 2021. Intelligent Privacy is available on select Dell systems and devices.

2 Available on Latitude 9000 and select 7000 series; Precision mobile workstations 7000 and select 5000 series. See product details for availability.

3 ExpressConnect available with Dell Optimizer software version 2.0 and onwards. Download the latest at <https://www.dell.com/support/home>.

4 Disclaimer: Simultaneous multi-network connection (or Connection based teaming) is a new connectivity feature under ExpressConnect. It simultaneously sends and receives data and video traffic using two or more wired or wireless connections. Based on Dell internal analysis.

5 Best network selection based on signal strength, channel congestion, router type and others. Network suggestions based on user credentials.

6 ExpressResponse must be enabled in the Applications feature. DO learns how user uses the selected application(s) over several hours. Based on Dell testing using Sysmark 2018 benchmark on a Latitude system running productivity applications; and using performance evaluation benchmarks on Precision mobile workstations running ISV applications, March 2020. Improvement will vary based on product configuration, use, application and other factors

7 User must input preferred apps first in order for them to be analyzed.

11 Based on Dell analysis, Jan 2021. 21% bioplastics in LCD coverlid.

12 EPEAT registered where applicable. EPEAT registration varies by country. See [www.epeat.net](http://www.epeat.net) for registration status by country.

13 Offering may vary by region. Some items may be available after product introduction. For complete details, refer to the Technical Guidebook published on [www.dell.com/support](http://www.dell.com/support).

14 System Memory and Graphics: Significant system memory may be used to support graphics, depending on system memory size and other factors.

15 4GB or Greater System Memory Capability: A 64-bit operating system is required to support 4GB or more of system memory.

16 Storage Option: GB means 1 billion bytes and TB equals 1 trillion bytes; actual capacity varies with preloaded material and operating environment and will be less.

17 Computrace: Not a Dell offer. Certain conditions apply. For full details, see terms and conditions at [www.lockforlaptops.com](http://www.lockforlaptops.com).

18 Please refer to [www.epeat.net](http://www.epeat.net) for specific country registration rating and participation.

19 Limited Hardware Warranty: For copy of Ltd Hardware Warranty, write Dell USA LP, Attn: Warranties, One Dell Way, Round Rock, TX 78682 or see [www.dell.com/warranty](http://www.dell.com/warranty).

20 On-site service after Remote Diagnosis: Remote Diagnosis is determination by online/phone technician of cause of issue; may involve customer access to inside of system and multiple or extended sessions. If issue is covered by Limited Hardware Warranty ([www.dell.com/warranty](http://www.dell.com/warranty)) and not resolved remotely, technician and/or part will be dispatched, usually within 1 business day following completion of Remote Diagnosis. Availability varies. Other conditions apply.

21 For complete listing of declarations and certifications, refer to the Dell Regulatory and Environmental Datasheet found in the Manuals section of Product Support information [www.dell.com/support/home/us/en/19](http://www.dell.com/support/home/us/en/19).