

FocalPoint™

Modular Projection Screen Designed for Meeting Rooms



DRAPER®

www.draperscreens.se

Draper® is pleased to announce an innovation in modular projection screens for portable applications: **The FocalPoint™**.

FocalPoint is designed for standard and small venues, such as meeting rooms or breakout rooms.

Strong Modular Frame

The FocalPoint utilizes modular frame construction that makes Draper® StageScreen® so popular. With small profile frame segments made of sturdy extruded aluminum, the FocalPoint is extremely rigid and durable, while remaining lightweight. With no hinges, the FocalPoint is strong, and still features quick and easy assembly.

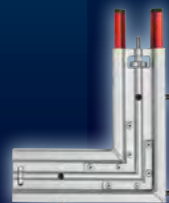
Frame Components

All available sizes of FocalPoint are built from combinations of frame segments and corner pieces. Frame segments come in lengths of 61cm, 91cm, 107cm and 122cm. Each leg is constructed using these same frame segments and one leg base.

Frame segments are color-coded for easy identification, and FocalPoint ships with clearly marked assembly instructions and easy-to-follow assembly maps.



Leg Base



Frame Corner Piece



122cm Frame Segment



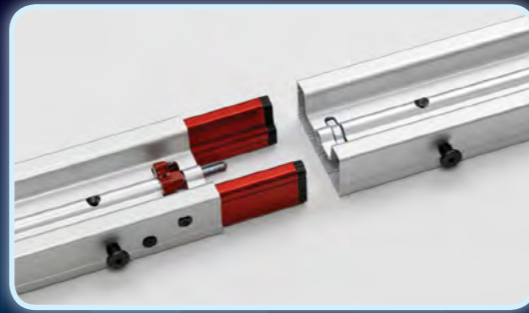
107cm Frame Segment



91cm Frame Segment



61cm Frame Segment



Easy frame assembly



FocalPoint with Dress Kit Skirt



Complete Dress Kit



Valance Bar



2-Piece Drapery Bar

Dress Kits

Optional Dress Kits feature Inherently Flame Retardant (IFR) Velour as standard. A FocalPoint Dress Kit consists of a 147cm skirt, valance, and a pair of side drapes. The skirt features simple attachment with convenient magnetic fasteners. Valance bars and drapery bars hook instantly onto the viewing surface posts, and drapes and valance attach with DuraLoops™.

Viewing Surface

The FocalPoint viewing surface attaches with Draper® unique DuraLoop™ bungees and convenient nylon pull-tabs. The result is a perfectly flat self-centering viewing surface that attaches quickly and easily—**WITH NO SNAPS**. In addition, the viewing surface includes a black border that extends past the edge of the frame for a finished appearance.

Viewing surfaces are available in Black-Backed M1300 for front projection. For rear projection, Cineflex and Low-Gain Cineflex neutral gray surfaces are available. Uniflex White viewing surface is suitable for either front or rear projection, and is ideal for edge blending. Custom surfaces and sizes are available.



Viewing surface attaches with DuraLoops



Viewing surface border provides a finished appearance

Standard Sizes and Formats

FocalPoint offers exact true formats in standard sizes up to 460 x 610 cm — no more nominal sizes. Call for custom sizes. Silver and black anodized frame colors are available.

FocalPoint ships complete with an appropriate number of carrying cases, in addition to a floor tarp to keep your viewing surface clean during assembly.

Configure standard and custom FocalPoint sizes, explore sizes that can be created from your existing frame inventory, and print or download color-coded assembly maps at www.draperscreens.se.

Multiple patents pending.

Standard Sizes

4:3

Overall Size (W x H, cm)	Viewing Area (W x H, cm)	Diagonal
223 x 172	203 x 152	100"
264 x 203	244 x 183	120"
325 x 249	305 x 229	150"
386 x 294	366 x 274	180"
447 x 340	427 x 320	210"
508 x 386	488 x 366	240"
569 x 431	549 x 411	270"
630 x 477	610 x 457	300"

16:9

Overall Size (W x H, cm)	Viewing Area (W x H, cm)	Diagonal
223 x 134	203 x 114	92"
264 x 157	244 x 137	110"
325 x 191	305 x 171	138"
386 x 226	366 x 206	165"
447 x 260	427 x 240	193"
508 x 294	488 x 274	220"
569 x 329	549 x 309	248"
630 x 363	610 x 343	275"

16:10

Overall Size (W x H, cm)	Viewing Area (W x H, cm)	Diagonal
223 x 147	203 x 127	94"
264 x 172	244 x 152	113"
325 x 210	305 x 191	142"
386 x 249	366 x 229	170"
447 x 278	427 x 267	198"
508 x 325	488 x 305	226"
569 x 363	549 x 343	255"
630 x 401	610 x 381	283"

DRAPER®

Kristinebergsvägen 22., 302 41, Halmstad, Sweden ■ www.draperscreens.se
tel +46 (0)35 14 42 90 ■ fax +46 (0)35 14 42 91

Copyright © 2010 Draper, Inc. ■ Form FocalPointFlyer710EU ■ Printed in Sweden