



# Eaton G4 Universal Input Rack PDU

## Rated for any rack IT infrastructure

With its universal input, versatile C39 outlets and global approval, Eaton's G4 universal input rack PDU (G4 UPDU) is a single solution equipped to meet the most diverse data center rack power needs. With basic, metered input and managed models available, this PDU accommodates single- and three-phase power in 208V and 415/240V environments, as well as equipment with a variety of connectors and power demands. The G4 UPDU includes all the sophisticated management capabilities you expect from an Eaton PDU and can easily be deployed into a single data center or a global project across multiple locations—saving time, reducing costs and simplifying power management.

## Power almost any equipment, anywhere

### Universal input

The G4 UPDU has power ratings from 5 kW up to 23 kW and single- or three-phase power options. It can be paired with any one of 17 removable input cables with 15 different plugs. By accommodating rack equipment with a broad range of power needs, it alleviates the cost and complexity of mixing and matching different PDUs for different installations and helps ensure you don't outgrow your PDU as power needs evolve.

### Outlets that give you options

C39 outlets on the G4 UPDU allow both C14 and C20 plugs, adding flexibility to deployments and reducing the quantity of PDUs you will need to purchase and install.

### Global approval

The G4 UPDU meets standards used all over the world, so you can source a single PDU chassis globally and pair it with cables rated for the voltage requirements at each destination.



## Enhanced security

Managed and metered input G4 UPDU models include a user-configurable firewall. Their embedded, hot-swappable gigabit network module (GNM) offers market-leading cybersecurity capabilities, including zero-trust architecture and zero-touch provisioning that facilitates security updates and reduces human error.

## Maximize control

### Outlet-level management boosts performance and efficiency

The G4 UPDU offers options for metering, monitoring and switching at the outlet level for granular power data and precise management of power delivery. This oversight lets you prioritize loads and control inrush through power-on sequencing. It also lets you remotely power cycle unresponsive equipment and power off unused outlets to prevent the PDU from powering unauthorized equipment.

The G4 UPDU's outlet-level alerts and remote control will help you respond faster to power issues and improve uptime, especially in remote and/or lightly staffed facilities.

### Remote management saves time and money

The G4 UPDU can be managed\* via web browser or SNMP integration into DCIM. You can also utilize management software from Eaton's Brightlayer Data Centers suite or third-party management systems. Remote PDU management reduces or eliminates costly on-site visits and frees up resources for other tasks—especially critical in edge of network and distributed IT installations.

## Simplify installation

### Small footprint saves space for revenue-generating equipment

The G4 UPDU has 24- and 42-outlet models. It includes end-entry input options and evenly distributed outlets along its 42U chassis. Its low-profile circuit breakers are flush with the chassis and its narrow, single-wide (2 in.) width provides multiple mounting options. The G4 UPDU and attached cabling are designed to cohabit as seamlessly as possible with other rack equipment.

### Painless box-to-rack experience

The G4 UPDU's toolless mounting buttons offer multiple mounting options to fit your rack's layout and power needs. It can be mounted front- or side-facing by simply moving the mounting buttons. Its hot-swappable GNM\* can be removed without interrupting power. You can cascade up to 40 units with individual IP addresses, simplifying management and cutting costs.

\*Excludes basic model



Powering Business Worldwide

## Feature focus

### 1 Network management and control\*

Hot-swappable GNM includes:

- Built-in, upgradable network card
- Push-button controls
- LCD pixel display with outlet-level readings available
- Serial/Ethernet ports for environmental monitoring and cascading
- USB port for firmware upgrades



### 2 Outlet bank circuit breaker

(6) 20A circuit breakers (one per outlet bank) protect outlets against overloads.



### 3 Outlet versatility

High-retention, P-lock compatible C39 combo outlets accept both C14 (15A) and C20 (20A) plugs. C13 outlets accept C14 plugs.



### 4 Indicator lights

Green = outlet is on; Red = PDU has power but outlet is off.



Front-entry input

### 5 Universal input

8-pin input connector supports 5 kW single-phase power through 23 kW three-phase power to accommodate a broad range of application power needs.



End-entry input

### Toolless mounting buttons (not shown)

2 buttons allow fast mounting and can be repositioned for flexibility.

*\*Excludes the EVBAG23X-E Basic PDU*

**High outlet density**  
Best-in-class 42 outlets (select models) in a 42U design power crowded racks.

**Low-profile form factor**  
Slim, lightweight aluminum chassis is optimal for side mounting in a rack without intruding into rail space.

**Color coding**  
Color-coded outlet banks and corresponding circuit breakers simplify load balancing.



Model: EVMI-GU23X

## Input cable options (sold separately)

Interchangeable 6 ft. or 10 ft. cables have locking 8-pin connectors and 15 different plug types:



L6-30P

L21-30P

332P6W

516P6W

460P9W

Hardwired 3P+PE

532P6W

560P6W



360P6W



CS8365



L15-30P



560P9W



L21-20P



L22-30P



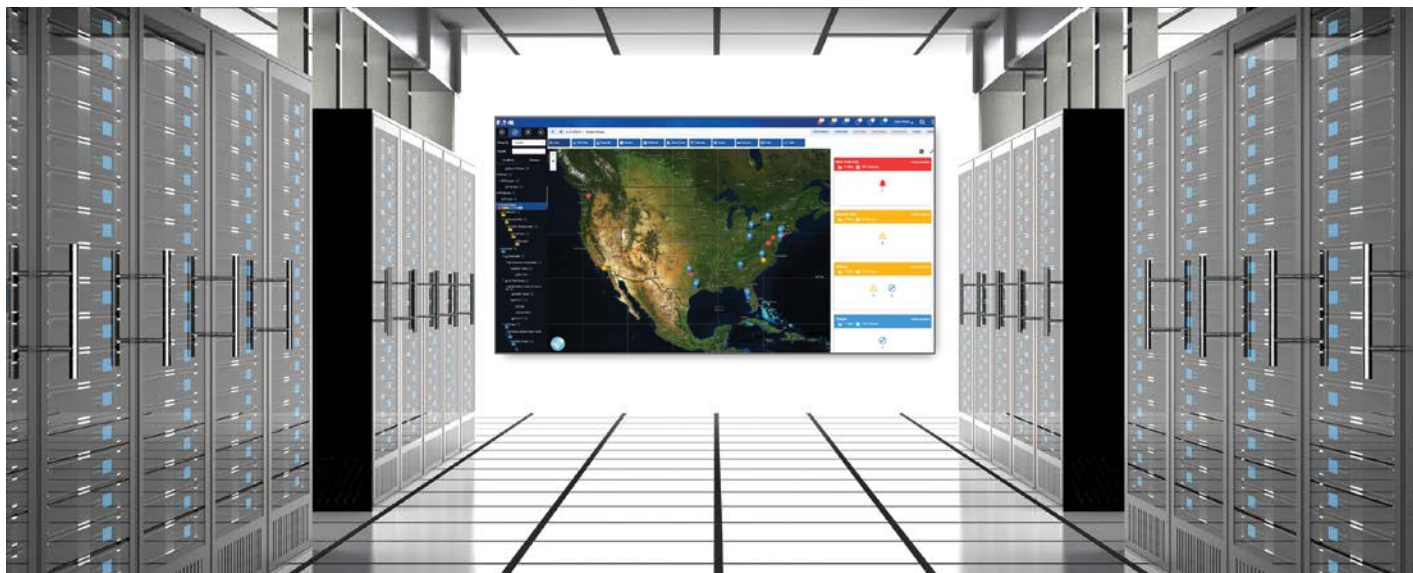
Hardwired  
3P+N+PE

# Brightlayer Data Centers suite



## A brighter vision for your IT infrastructure

G4 UPDU managed and metered models feature a built-in GNM that is compatible with software from Eaton's Brightlayer Data Centers suite. When used together, these hardware/software solutions provide deep and insightful intelligence into your IT power to streamline your operations and prepare for future needs. They also enable extensive automation and remote management that shortens response times to power issues and ensures timely updates for stronger cybersecurity.



### Plan and protect

Data compilation across fleets of PDUs and other compatible infrastructure puts valuable planning information just a click away.

Remote monitoring and automated actions such as field technician dispatches and graceful shutdown during power events protect data and reinforce uptime.



### Operate efficiently

Enhanced insights into power infrastructure capacity and asset lifecycles help you run leaner and scale up or down with agility—providing better control of your TCO and ROI.



For more information about Eaton's Brightlayer Data Centers suite, visit: [Eaton.com/BrightlayerDataCenters](https://Eaton.com/BrightlayerDataCenters)

## UPDU technology comparison

G4 UPDU Type:	Universal input	Global approval	C39 outlets	Network management	Metering	Individual outlet control
Basic	✓	✓	✓			
Metered input	✓	✓	✓	✓	✓ (at input and section)	
Managed	✓	✓	✓	✓	✓ (at input, section and outlet)	✓

## Specifications

Catalog number	PDU type	Form factor	Input voltage	Output capacity	Input connection (on chassis)	Input plug	Outlets	Dimensions (H x W x D)
EVBAGU23X-E	Basic	OU (vertical)	Input cable determines single- or three-phase wiring & voltage	Up to 23 kW, varies by input cable	UTG 8-pin, end entry	15 options, see below	42: (24) C13; (18) C39	64 x 2.1 x 2.6 in. (162.5 x 5.3 x 6.5 cm)
EVMIGU23A-E	Metered input	OU (vertical)	Input cable determines single- or three-phase wiring & voltage	Up to 23 kW, varies by input cable	UTG 8-pin, end entry	15 options, see below	24: (12) C13; (12) C39	55.9 x 2.1 x 2.6 in. (142 x 5.3 x 6.5 cm)
EVMIGU23X	Metered input	OU (vertical)	Input cable determines single- or three-phase wiring & voltage	Up to 23 kW, varies by input cable	UTG 8-pin, front entry	15 options, see below	42: (24) C13; (18) C39	72 x 2.1 x 2.6 in. (183 x 5.3 x 6.5 cm)
EVMIGU23X-E	Metered input	OU (vertical)	Input cable determines single- or three-phase wiring & voltage	Up to 23 kW, varies by input cable	UTG 8-pin, end entry	15 options, see below	42: (24) C13; (18) C39	72 x 2.1 x 2.6 in. (183 x 5.3 x 6.5 cm)
EVMAGU23A-E	Managed	OU (vertical)	Input cable determines single- or three-phase wiring & voltage	Up to 23 kW, varies by input cable	UTG 8-pin, end entry	15 options, see below	24: (12) C13; (12) C39	55.9 x 2.1 x 2.6 in. (142 x 5.3 x 6.5 cm)
EVMAGU23X	Managed	OU (vertical)	Input cable determines single- or three-phase wiring & voltage	Up to 23 kW, varies by input cable	UTG 8-pin, front entry	15 options, see below	42: (24) C13; (18) C39	72 x 2.1 x 2.6 in. (183 x 5.3 x 6.5 cm)
EVMAGU23X-E	Managed	OU (vertical)	Input cable determines single- or three-phase wiring & voltage	Up to 23 kW, varies by input cable	UTG 8-pin, end entry	15 options, see below	42: (24) C13; (18) C39	72 x 2.1 x 2.6 in. (183 x 5.3 x 6.5 cm)

## Input cable specifications

Catalog number	Plug	Length	Panel breaker	Derated current	Voltage	Region	Power phase	Output capacity
CBL350-10	L6-30P	10 ft. (3 m)	30A	24A	208V	AMER	Single	5.0 kW
CBL354-10	332P6W	10 ft. (3 m)	30A	24A	240V	AMER	Single	5.8 kW
			32A	32A	230V	EMEA/APAC	Single	7.4 kW
CBL367-10	L21-20P	10 ft. (3 m)	20A	16A	208V WYE	AMER	Three	5.8 kW
CBL365-10	L15-30P	10 ft. (3 m)	30A	24A	208V Delta	AMER	Three	8.6 kW
CBL351-10	L21-30P	10 ft. (3 m)	30A	24A	208/120V WYE	AMER	Three	8.6 kW
CBL362-10	360P6W	10 ft. (3 m)	60A	48A	240V	AMER	Single	11.5 kW
CBL355-10	516P6W	10 ft. (3 m)	20A	16A	240/415V WYE	AMER	Three	11.5 kW
			16A	16A	230/400V WYE	EMEA/APAC	Three	11.0 kW
CBL364-06	CS8365	6 ft. (1.8 m)	50A	40A	208V Delta	AMER	Three	14.4 kW
CBL364-10	CS8365	10 ft. (3 m)	50A	40A	208V Delta	AMER	Three	14.4 kW
CBL356-06	460P9W	6 ft. (1.8 m)	60A	48A	208V Delta	AMER	Three	17.3 kW
CBL356-10	460P9W	10 ft. (3 m)	60A	48A	208V Delta	AMER	Three	17.3 kW
CBL366-10	560P9W	10 ft. (3 m)	60A	48A	208/120V WYE	AMER	Three	17.3 kW
CBL357-10	Hardwired 3P+PE	10 ft. (3 m)	60A	48A	208V Delta	AMER	Three	17.3 kW
CBL368-10	L22-30P	10 ft. (3 m)	30A	24A	240/415V WYE	AMER	Three	17.3 kW
CBL358-10	532P6W	10 ft. (3 m)	30A	24A	240/415V WYE	AMER	Three	17.3 kW
			32A	32A	230/400V WYE	EMEA/APAC	Three	22.1 kW
CBL360-10	560P6W	10 ft. (3 m)	40A or 60A	32A	240/415V WYE	AMER	Three	23.0 kW
CBL369-10	Hardwired 3P+N+PE	10 ft. (3 m)	40A	32A	240/415V WYE	AMER	Three	23.0 kW

**Eaton**  
1000 Eaton Boulevard  
Cleveland, OH 44122  
United States  
Eaton.com

© 2023 Eaton  
All Rights Reserved  
BR155055EN / 23-08-002  
October 2023

For more information about the G4 UPDU  
please visit [Eaton.com/UPDU](https://Eaton.com/UPDU)



**EATON**  
Powering Business Worldwide

Eaton is a registered trademark.

All other trademarks are property of their respective owners.

Follow us on social media to get the latest product and support information.

