

SPECIFICATIONS

FinePix F200EXR	
Number of effective pixels*	12.0 million pixels
CCD sensor	1/1.6-inch Super CCD EXR
Storage media	Internal memory (Approx. 48MB) / xD-Picture Card™ (16MB - 2GB) / SD memory card / SDHC memory card**
File format	Still image: JPEG (Exif Ver. 2.2**) Movie: AVI (Motion JPEG) with sound / Audio: WAVE format, Monaural sound (Design rule for Camera File system compliant / DPOF-compatible)
Number of recorded pixels	Still image: L: 4:3 4,000 × 3,000 L: 3:2 4,000 × 2,664 L: 16:9 4,000 × 2,248 M: 4:3 2,816 × 2,112 M: 3:2 2,816 × 1,864 M: 16:9 2,816 × 1,584 S: 4:3 2,048 × 1,536 S: 3:2 2,048 × 1,360 S: 16:9 1,920 × 1,080
Lens	Fujinon 5x optical zoom lens, F3.3 (Wide) - F5.1 (Telephoto)
Lens focal length	f=6.4 - 32.0 mm, equivalent to 28 - 140 mm on a 35 mm camera
Digital zoom	Approx. 4.4x
Aperture	Wide: F3.3 / F9.0, Telephoto: F5.1 / F14
Focus distance (from lens surface)	Normal: Wide: Approx. 45 cm / 1.5 ft. to infinity, Telephoto: Approx. 80 cm / 2.6 ft. to infinity Macro: Wide: Approx. 5 cm - 80 cm / 0.2 ft. - 2.6 ft., Telephoto: Approx. 50 cm - 1 m / 1.6 ft. - 3.3 ft.
Sensitivity	Auto / Auto (3200) / Auto (1600) / Auto (800) / Auto (400) Equivalent to ISO100 / 200 / 400 / 800 / 1600 / 3200 / 6400 / 12800 (Standard Output Sensitivity) *Number of recorded pixels: ISO6400: "M" or "S", ISO12800: "S" only
Exposure control	TTL 256-zones metering
Exposure mode	Programmed AE, Aperture Priority AE, Manual
Shooting modes	Mode dial: Auto, EXR, Natural Light, Natural Light & with Flash, SP, P, M, Movie SP: Portrait, Portrait Enhancer, Landscape, Sport, Night, Fireworks, Night (Tripod), Sunset, Snow, Beach, Underwater, Museum, Party, Flower, Text
Image Stabilization	CCD-shift type
Shutter speed	(Auto mode) 1/4 sec. to 1/1500 sec., (All other modes) 8 sec. to 1/1500 sec.
Continuous shooting	Top-3, (max. 1.4 frames/sec.) Top-12, High speed (max. 5 frames/sec., number of recorded pixels: "S" only) Final-3, (max. 1.4 frames/sec.) Final-12, High speed (max. 5 frames/sec., number of recorded pixels: "S" only) Long-period
Focus	Auto focus (Area, Multi, Center) / Continuous AF, AF assist illuminator available
White balance	Automatic scene recognition Preset: Fine, Shade, Fluorescent light (Daylight), Fluorescent light (Warm White), Fluorescent light (Cool White), Incandescent light, Underwater lighting Custom
Self-timer	Approx. 10 sec. / 2 sec. delay
Flash	Auto flash Effective range: (ISO AUTO): Normal: Wide: Approx. 60 cm - 4.3 m / 2.0 ft. - 14.1 ft. Telephoto: Approx. 60 cm - 2.8 m / 2.0 ft. - 9.2 ft. Macro: Approx. 30 cm - 80 cm / 1.0 ft. - 2.6 ft. Flash modes Red-eye removal OFF: Auto, Forced Flash, Suppressed Flash, Slow Synchro. Red-eye removal ON: Red-eye Reduction Auto, Red-eye Reduction & Forced Flash, Suppressed Flash, Red-eye Reduction & Slow Synchro.
LCD monitor	3.0-inch, Approx. 230,000 dots, TFT color LCD monitor, Approx. 100% coverage
Movie recording	640 × 480 pixels / 320 × 240 pixels (30 frames / sec.) with monaural sound *Zoom function cannot be used during movie recording.
Photography functions	EXR mode (EXR AUTO, RESOLUTION PRIORITY, HIGH ISO & LOW NOISE PRIORITY, D-RANGE PRIORITY), Film Simulation, Face Detection (with Auto red-eye removal), Power management, Framing guideline, Frame No. memory
Playback functions	Face Detection (with Red-eye removal), Slide show, Trimming, Multi-frame playback (with Micro Thumbnail), Sorting by date, Image rotate, Resize, Voice memo
Video output	NTSC / PAL selectable
HD out	Analog component / HDC-1 component video cable for digital camera
Digital interface	USB 2.0 High-speed
Power supply	NP-50 Li-ion battery (included) / CP-50 with AC power adapter AC-5VX (sold separately)
Dimensions	97.7 (W) × 58.9 (H) × 23.4 (D) mm / 3.8 (W) × 2.3 (H) × 0.9 (D) in. (excluding accessories and attachments)
Weight	Approx. 175 g / 6.2 oz. (excluding accessories, battery and memory card)

Microsoft, Windows and Windows logo are trademarks, or registered trademarks of Microsoft Corporation in the United States and/or other countries. Macintosh and Mac OS are trademarks of Apple Computer, Inc., registered in the U.S. and other countries. SD logo is a trademark. All other trademarks are the property of their respective holders.

FUJIFILM
FUJIFILM Corporation

COLOR VARIATIONS



Silver

Black

Number of images / recording time

Mode	Still image						Movie	
	4,000 × 3,000 (L 4:3)		2,816 × 2,112 (M 4:3)		2,048 × 1,536 (S 4:3)		Movie recording time	
Quality	JPEG FINE	JPEG NORMAL	JPEG FINE	JPEG NORMAL	JPEG FINE	JPEG NORMAL	VGA (25fps)	QVGA (25fps)
Internal memory (approx. 48MB)	10	16	16	32	31	61	43 sec.	1 min. 25 sec.
xD-Picture card	256MB	50	85	85	170	310	3 min.	7 min.
	512MB	100	170	170	340	620	7 min.	14 min.
	1GB	210	340	340	680	1250	14 min.	29 min.
	2GB	430	680	680	1360	2460	29 min.	59 min.
SD memory card	512MB	100	160	160	330	310	7 min.	14 min.
	1GB	200	330	330	660	620	14 min.	28 min.
	2GB	410	660	670	1310	1230	29 min.	57 min.
	SDHC memory card	8GB	830	1330	1340	2640	2480	58 min.*
		1680	2670	2700	5290	4980	116 min.*	230 min.*

Actual number of frames and recording time varies depending on the types of memory card or shooting conditions.

*A movie recording will stop automatically when the movie file size becomes approx. 2GB.

*1: Number of effective pixels: The number of pixels on the image sensor which receive input light through the optical lens, and which are effectively reflected in the final output data of the still image.

*2: Please see the Fujifilm website to check memory card compatibility.

*3: Exif 2.2 is a digital camera file format that contains a variety of shooting information for optimal printing.

*4: *CIPA DC-002:2003 Standard Procedure for Measuring Digital Still Camera Battery Consumption* (extract) Pictures shall be taken at a temperature of 23°C, with the LCD monitor turned on, the zoom moved from full wide-angle to full telephoto (or vice-versa) and back again to its original position every 30 seconds, the flash used at full power every second shot and the camera turned off and then on again once every 10 shots.

OPTIONAL ACCESSORIES

Li-ion battery NP-50



Waterproof case WP-FXF200



HD-cable HDC-1



xD-Picture Card™
DPC-M256 / DPC-M512 / DPC-MP1GB / DPC-MP2GB
PC card adapter DPC-AD
CompactFlash™ card adapter DPC-CF
AC power adapter AC-5VX
Battery charger BC-50
DC coupler CP-50

ACCESSORIES INCLUDED

- Li-ion battery NP-50
- Battery charger BC-45W
- Hand strap
- USB-A/V cable
- CD-ROM: FinePixViewer
- Owner's manual

Guide to the number of available frames for battery operation

Battery	LCD monitor status	Number of frames
NP-50	LCD monitor ON	Approx. 230 frames

The number of frames per charge will decrease in Quick AF / Clear Display mode.

According to the Camera & Imaging Products Association (CIPA) standards** - The battery (NP-50) is supplied with the camera.

Accessory availability may vary by country. Please check with your local Fujifilm representative to confirm product availability.



Specifications are subject to change without notice.

For more information, please visit our Website:
http://www.fujifilm.com/products/digital_cameras/index.html

FUJIFILM

FINEPIX F200 EXR

Extreme evolution in imaging



12M Super CCD EXR

EXR AUTO

Film Simulation Mode

5x Optical Zoom

Wide-Angle 28mm
35mm equivalent



FinePix. More than you imagined.

Ref. No. EB-810E (SK-09-02-F2586-F9711) Printed in Japan ©2009 FUJIFILM Corporation

Super CCD EXR – the extreme sensor for extreme image quality.

The new Super CCD EXR and EXR Processor in the revolutionary F200EXR introduce a totally new concept in capturing image quality. Just as your eye seamlessly adapts to every situation, the new Super CCD EXR instantly becomes the ideal sensor for every scene. It's like having the power of three highly specialized sensors in one CCD. When the priority is fine detail, it switches to high resolution. For scenes with an extreme range between the brightest and darkest areas, processing is optimized for a wide dynamic range to capture the rich tonality. In dark scenes, sensitivity captures the shot with exceptionally low noise. Every shot in every scene - more beautiful than you imagined.

 **SUPER
CCD EXR**



FINEPIX F200EXR





D-range Priority Mode: 6-megapixel, ISO200, Dynamic Range 800%



High ISO & Low Noise Priority Mode: 6-megapixel, ISO1600, Dynamic Range 100%

EXR Mode – *Extreme creativity with "Priority". Extreme point-and-shoot with "Auto".*



EXR Priority – *You can set the sensor for the scene.*

Ideally each scene demands different sensor functionalities. With EXR Priority, you can manually "switch" the sensor to one of three capture modes. Just like your eye prioritizes different functions for optimal viewing of different scenes, each EXR mode uses a different approach to change how the sensor captures the image. Unlike conventional technology that relies on "processing" the image after capture, the fundamental image quality during capture is remarkably improved.



HR High Resolution

Just as your eye sees the finest detail in bright conditions, "Resolution Priority" uses the full 12 megapixel resolution of the unique EXR array to reproduce the smallest detail in bright beautiful color.



DR Wide Dynamic Range

Just as your eye sees the full range of shadows to highlights in high-contrast scenes, "D-range Priority" simultaneously captures two images to produce a single image with Wide Dynamic Range up to 800%, revealing subtleties in shadow and eliminating washout of the bright areas.



Conventional digital camera (100%)

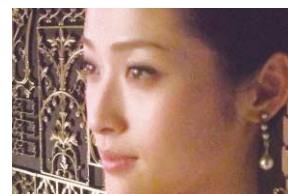


FinePix F200EXR (800%)



SN High Sensitivity and Low Noise

Just as your eye strives to make dark scenes as bright and detailed as possible, "High ISO & Low Noise Priority" takes advantage of high sensitivity and FinePix's original pixel binning technology to capture the subject with exceptional brightness and minimal noise.

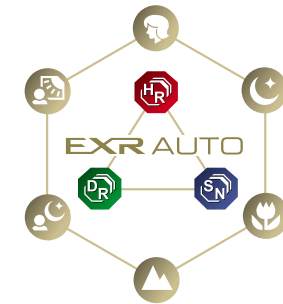


Conventional digital camera



FinePix F200EXR

With "D-range Priority" and "High ISO & Low Noise Priority", maximum image resolution (number of pixels) is halved.



EXR AUTO – *You take the picture, we switch the sensor.*

The "EXR AUTO" not only automatically recognizes the scene and selects the ideal shooting mode, but also "switches" the sensor to the perfect capture mode for each condition. With the sensor and every setting automatically optimized for the scene, you just frame and shoot for a new dimension in image quality.



Automatic Sensor Switching

[In Bright Scenes]

HR High Resolution



The artistry of an antique pendant under good lighting. As soon as you frame the close-up shot, "EXR AUTO" not only selects Macro mode, but also switches the sensor to High Resolution mode and captures the exquisite design in full 12-megapixel detail.

[In High-contrast Scenes]

DR Wide Dynamic Range



A close-up of a flower translucent against strong backlighting. Again "EXR AUTO" instantly selects Macro mode scene, but this time, it recognizes the high contrast lighting and switches the sensor to Wide Dynamic Range mode to reveal subtle shades in the petals and detail in the bright sky.

[In Dark Scenes]

SN High Sensitivity and Low Noise



A cocktail on a dimly lit bar counter. EXR automatically selects Macro when you move in for your close up. Recognizing the low light scene, it also switches the sensor to High Sensitivity and Low Noise mode to capture the subject with smooth texture and natural brightness free from noise.

For further information of EXR, visit <http://finepix.com/exr/en/>



12-megapixel, ISO100, Dynamic Range AUTO, Velvia / Vivid mode



PROVIA / Standard Mode

Powerful mode for any subject. Produce colors with the natural tone of PROVIA film, trusted by professional photographers.



Velvia / Vivid Mode

Mode for distinctive saturation and the colors of Velvia. Produce the vivid colors of subjects in photos with great sharpness and color tones.



ASTIA / Soft Mode

Mode for soft, fine, smooth tonality. Fidelity of hue and soft tone are the features of this mode.



Black & White Mode

Capture the dramatic honesty of your image in black and white.

FS – *Film Simulation Mode*

Simulate the distinctive look of 5 different film types with just a touch of a button. Modeled on Fujifilm brands loved by professional photographers, each breathes life into your image with a quality that previously only film could capture.



Sepia Mode

Create a sense of nostalgia with the warm brown "antique" tones of Sepia.

More features to capture exceptional clarity and vivid detail.



28mm Wide Angle & 5x Optical Zoom

With wide angle, you can capture the breathtaking scale of landscapes. The power of 5x optical zoom brings distant subjects up close. The F200EXR lets you capture more scenes in more situations with exceptional results.



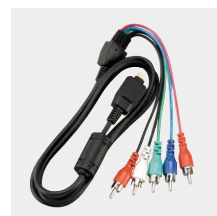
Wide Angle



5x Optical Zoom

HDTV-ready Photo Viewing

Just connect the F200EXR to your HDTV monitor with the optional cable and share the incredible detail and beauty of EXR image quality with family and friends.



Optional HD Cable HDC-1



Dual IS (Image Stabilization)

FinePix high sensitivity freezes subjects to defeat motion blur while CCD Shift Image Stabilization compensates for camera shake. Together they prevent image blur – the number one cause of spoilt photos.



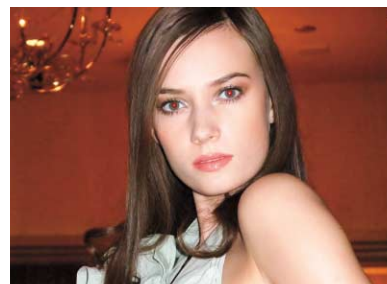
Conventional digital camera



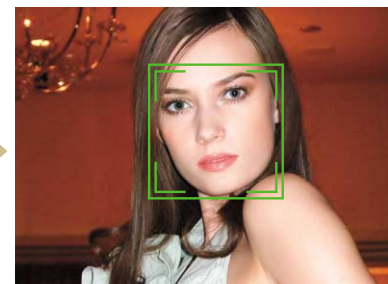
FinePix F200EXR

Auto "Red Eye" Removal

Taking advantage of FinePix Face Detection, this in-camera function accurately detects and corrects red eye as the shot is taken or in playback.



Lost photo opportunity



FinePix F200EXR

Shooting Modes

For more hands-on control, you can choose Aperture Priority to manually select aperture and control depth of field. When shooting fast moving objects, try Manual mode for manual shutter speed setting.



MANUAL

Super Intelligent Flash

New "Super Intelligent Flash" is flash control technology that lets you take flash-assisted macro shots without flash washout. Integrated in the AUTO mode, this next-generation flash system makes it easy to capture subjects and background in bright, clear and natural detail over the full flash range including ultra close-ups.



Conventional digital camera



FinePix F200EXR

Waterproof Case + White Balance (Underwater)



SP UnderWater

With the optional waterproof case and White Balance (Underwater) mode to adjust color temperature for more beautiful blues, you are ready to dive into another world of photography.



Optional Waterproof Case WP-FXF200

Large 3.0" LCD

The large high-resolution screen makes everything easier and more fun. From framing shots and reading built-in function descriptions to navigating in-camera albums with the 10 x 10 micro thumbnail array and playing back results, F200EXR is a joy to use.



Micro Thumbnail View