

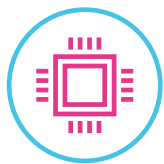
# ideacentre 510A

## UPGRADE YOUR FAMILY DESKTOP PC

### A DESKTOP KEEPING YOUR FAMILY CONNECTED

Great for family members to connect and share, Lenovo™ IdeaCentre™ 510A is equipped with the latest 7<sup>th</sup> Generation Intel® Core™ processors, NVIDIA® GeForce® GT 730 graphics, PCIe SSD storage and ready for Intel® Optane™ Memory technology. In addition to up to 2 TB HDD storages, Lenovo IdeaCentre 510A offers your own storage assistant - Lenovo Family Cloud where you can share any content you like with your family members and friends.

### WHY YOU SHOULD BUY THE LENOVO IDEACENTRE 510A



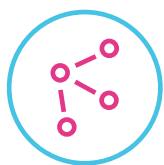
#### Flawless performance

Built with the newest 7<sup>th</sup> Generation Intel® Core™ processors and complete with NVIDIA® GeForce® GT 730 graphics, IdeaCentre 510A is the perfect combination of daily work and entertainment.



#### Lightning-fast PCIe SSD storage, and ready for Intel® Optane™ memory

Latest storage technology - PCIe SSD storage boosts daily performance significantly when compared with a traditional Hard Disk Drive, and it is ready for the state-of-the-art technology of Intel® Optane™ Memory for system acceleration.



#### Connects to all your accessories

Your monitor, keyboard, external hard drive, camera and favorite speakers don't need to vie for available ports on the IdeaCentre 510A. This machine offers multiple ways to connect.



#### Lenovo family cloud

A central interface for your secured data storage features smart recognition technology, and effortlessly upload and download between your mobile and PC within the same network.



Lenovo™



[WWW.LENOVO.COM](http://WWW.LENOVO.COM)



# ideacentre 510A

## SPECIFICATIONS

Lenovo IdeaCentre 510A-15IKL\*

### PERFORMANCE

#### Processor

Up to 7<sup>th</sup> Generation Intel® Core™ i7 Processor

#### Operating System

Windows 10 Home

#### Graphics

NVIDIA® GeForce® GT 730 Graphics

#### Memory

Up to 16 GB DDR4 with Intel® Optane™ Memory Ready

#### Storage

Up to 256 GB PCIe SSD

Up to 2 TB HDD

Up to 256 GB SSD and 2 TB HDD

### CONNECTIVITY

#### WLAN

WiFi 802.11 ac

#### Bluetooth®

Bluetooth® 4.0

#### I/O (Input/Output) Ports

6 x USB 3.0

2 x USB 2.0

1 x VGA

1 x HDMI™

1 x LAN

### DESIGN

#### Volume

15 Liter

#### Dimensions (W x D x H)

(mm) : 145 x 285 x 366.03

(inches) : 5.71" x 11.22" x 14.41"

#### Weight

Starting at 12.8 lbs (5.8 kg)

#### Colors

Gun Metal

### PRELOADED SOFTWARE

#### Lenovo Application

- Lenovo Rescue System
- Lenovo DAI (Driver and Application Install)
- Lenovo Companion
- Lenovo Family Cloud
- Lenovo ID
- Lenovo Application Explorer (LAE)
- Lenovo Audit Data (LAD)
- CCSDK

#### OEM Application

- McAfee™ AntiVirus
- Microsoft Office 2016
- Power2Go/Blu-ray Disc™ 6.0
- PowerDVD/Blu-ray Disc™ 12.0
- Adobe® Reader® 10 / Microsoft Silverlight 4.0\*
- E&M Monetization Software (LAD, IE Bookmark, DAD, Dropbox JP . . .)

\* For Canada/USA.



## LENOVO SERVICES

#### Warranty Upgrades - On-site / In-Home Service

Maximizes PC uptime and productivity by providing convenient, fast repair services in your own home.

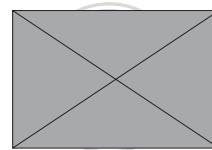
#### Accidental Damage Protection

Avoid the hassles of unexpected repair costs. Provides coverage for non-warranted damage incurred under normal operating conditions, such as minor spills, drops or damage to the integrated screen.

#### Warranty Extensions (1-to-3 Years Total Duration)

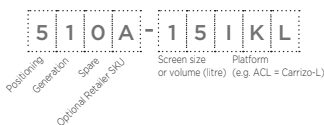
This fixed-term, fixed-cost service helps accurately budget for PC expenses, protect your valuable investment and potentially lower the cost of ownership over time.

## OPTIONS & ACCESSORIES



Optional Lenovo 500 Wireless Combo Keyboard and Mouse

\* Example of Lenovo IdeaCentre catalogue naming convention



#### Intel® platform codes

Haswell H81: IHH, BroadWell U: IBU, Skylake Z170: ISZ, Skylake B150: ISB, Kabylake: IKL, Skylake H110/H170: ISH, Skylake U: ISU, Apollo Lake: IAP



WWW.LENOVO.COM

Lenovo reserves the right to alter product offerings and specifications at any time, without notice. Lenovo makes every effort to ensure accuracy of all information but is not liable or responsible for any editorial, photographic or typographic errors. All images are for illustration purposes only. For full Lenovo product, service and warranty specifications visit [www.lenovo.com](http://www.lenovo.com). Lenovo makes no representations or warranties regarding third party products or services. **Trademarks:** The following are trademarks or registered trademarks of Lenovo: Lenovo, the Lenovo logo, ideapad, IdeaCentre, yoga and yoga home. Microsoft, Windows and Vista are registered trademarks of Microsoft Corporation. Ultrabook, Celeron, Celeron Inside, Core Inside, Intel, Intel Logo, Intel Atom, Intel Atom Inside, Intel Core, Intel Inside, Intel Inside Logo, Intel vPro, Itanium, Itanium Inside, Pentium, Pentium Inside, vPro Inside, Xeon, Xeon Phi, and Xeon Inside are trademarks of Intel Corporation in the U.S. and/or other countries. Other company, product and service names may be trademarks or service marks of others. Visit [www.lenovo.com/lenovo/us/en/safecom/](http://www.lenovo.com/lenovo/us/en/safecom/) periodically for the latest information on safe and effective computing. ©2017 Lenovo. All rights reserved.



Lenovo™