

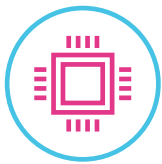
ideacentre 720

FUN AND SEDUCTIVELY-POWERFUL

A DESKTOP BEYOND YOUR IMAGINATION

From its leading-edge technology to its contemporary good looks to its many life-simplifying features, the versatile and powerful Lenovo™ IdeaCentre™ 720 desktop PC will make a welcome addition to any home.

WHY YOU SHOULD BUY THE LENOVO IDEACENTRE 720



Instant gratification with Intel®

Call it impatience or modern life, you expect things instantly. And with the IdeaCentre 720 powered by up to 8th Generation Intel® Core™ i7 processors, that's exactly what you'll get. Up to 6-Core™ processors provide lightning-fast responsiveness, improved graphics, and revamped internet connectivity.



Faster, faster, faster

Boost performance with up to NVIDIA® GeForce® GTX 1060 6 GB discrete graphics. A discrete graphics card improves CPU performance while editing video or handling other graphically intensive tasks—you'll get a smooth visual experience. Plus, with performance up to three times faster, you'll be more than ready for next-gen virtual reality experiences.



Lenovo™



What are you waiting for?

Engineered to accelerate your system, Intel® Optane™ memory gives top-notch responsiveness to IdeaCentre 720 - install and open applications without delay, and switch between multiple applications seamlessly*.



As functional as it is stylish

IdeaCentre 720 features multiple ways to connect your monitor, keyboard, VR headset, external hard drive, camera and favorite speakers—but there's no need to fret about unsightly ports. Its front USB ports, card reader, and audio/microphone jack are housed in a front space with a magnetic door, while additional USB ports, audio jack, VGA-Out, and HDMI™-Out are hidden in the rear. This machine always keeps you connected, while maintaining its classy style.



* Intel® Optane™ delivers 1000x faster switch states when compared to traditional NAND technology.



WWW.LENOVO.COM



ideacentre 720

SPECIFICATIONS

Lenovo IdeaCentre 720-18ICB*

PERFORMANCE

Processor

8th Generation Intel® Core™ i7-8700 Processor
8th Generation Intel® Core™ i5-8400 Processor
8th Generation Intel® Core™ i3-8100 Processor
Intel® Pentium® Gold G5400 Processor
Intel® Celeron® G4900 Processor

Operating System

Windows 10 Home or windows 10 Pro

Discrete Graphics

NVIDIA® GeForce® GTX 1060
NVIDIA® GeForce® GTX 1050 Ti
NVIDIA® GeForce® GTX GT 730
AMD Radeon™ RX 570
AMD Radeon™ RX 560
AMD Radeon™ RX 550
AMD Radeon™ RX 480
Intel® UHD Graphics 630
Intel® UHD Graphics 610

Memory

Up to 32 GB DDR4 Dual Channel with
16 GB Intel® Optane™ Memory¹

Storage

Up to 256 GB PCIe SSD and
2 TB HDD Hybrid Storage

DESIGN

Volume

18 Liter

Dimensions (W x L x H)

(mm) : 165 x 324.5 x 376
(inches) : 6.5" x 12.8" x 14.8"

Weight

Starting at 17.6 lbs (8 kg)

Color

Warm Silver / Black

CONNECTIVITY

WLAN & Bluetooth®

1x1 & 2x2 WiFi 802.11 ac (Dual-band,
MU-MIMO) / Bluetooth® 4.x Combo with
WiFi Card

I/O (Input/Output) Ports

Front Ports

2 x USB 3.0
2 x USB 3.1
1 x USB 3.0 Type-C™
2 x Audio/Microphone-In
7-in-1 Card Reader

Rear Ports

4 x USB 2.0
LAN
RJ45
Audio Line Out
VGA
HDMI™

PRELOADED SOFTWARE

- Lenovo Vantage
- Microsoft Office 2016
- McAfee LiveSafe™
- Lenovo App Explorer
- CyberLink PowerDVD/Power2Go²

¹ Optional.

² With DVD drive.



LENOVO SERVICES

Warranty Upgrades - On-site / In-Home Service

Maximizes PC uptime and productivity by providing convenient, fast repair services in your own home.

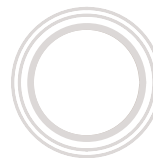
Accidental Damage Protection

Avoid the hassles of unexpected repair costs. Provides coverage for non-warranted damage incurred under normal operating conditions, such as minor spills, drops or damage to the integrated screen.

Warranty Extensions (1-to-3 Years Total Duration)

This fixed-term, fixed-cost service helps accurately budget for PC expenses, protect your valuable investment and potentially lower the cost of ownership over time.

OPTIONS & ACCESSORIES



Lenovo 500
Wireless Combo
Keyboard & Mouse



Lenovo
UHD F309
USB 3.0 2 TB

* Example of
Lenovo IdeaCentre
catalogue naming
convention



Intel® platform codes

Haswell H81: IHH, BroadWell U: IBU, Skylake Z170: ISZ, Skylake B150: ISB, KabyLake: IKL, Skylake H110/H170: ISH, Skylake U: ISU, Apollo Lake: IAP, Coffee Lake B360: ICB, Coffee Lake H: ICH, Coffee Lake Z370 Overclock: ICO



WWW.LENOVO.COM

Lenovo reserves the right to alter product offerings and specifications at any time, without notice. Lenovo makes every effort to ensure accuracy of all information but is not liable or responsible for any editorial, photographic or typographic errors. All images are for illustration purposes only. For full Lenovo product, service and warranty specifications visit www.lenovo.com. Lenovo makes no representations or warranties regarding third party products or services. **Trademarks:** The following are trademarks or registered trademarks of Lenovo: Lenovo, the Lenovo logo, ideapad, IdeaCentre, yoga and yoga home. Microsoft, Windows and Vista are registered trademarks of Microsoft Corporation. Ultrabook, Celeron, Celeron Inside, Core Inside, Intel, Intel Logo, Intel Atom, Intel Atom Inside, Intel Core, Intel Inside, Intel Inside Logo, Intel vPro, Itanium, Itanium Inside, Pentium, Pentium Inside, vPro Inside, Xeon, Xeon Phi, and Xeon Inside are trademarks of Intel Corporation in the U.S. and/or other countries. Other company, product and service names may be trademarks or service marks of others. Visit www.lenovo.com/lenovo/us/en/safecomp/ periodically for the latest information on safe and effective computing. ©2018 Lenovo. All rights reserved.



Lenovo™