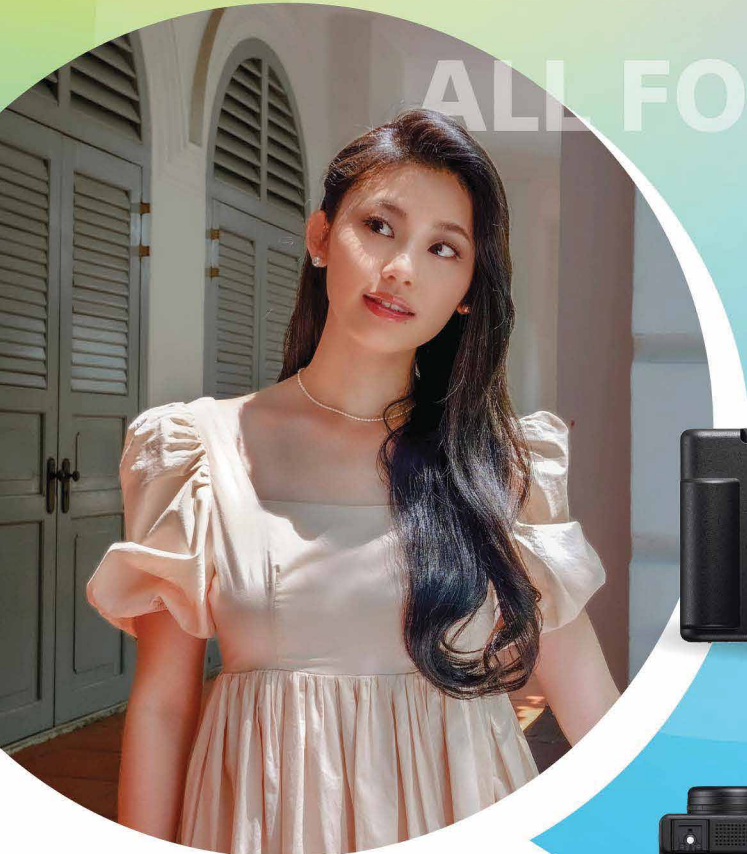


SONY





ALL FOR VLOGGING

Vlog Camera ZV-1 II

Designed for Vloggers

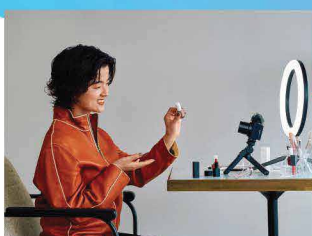
Color :  



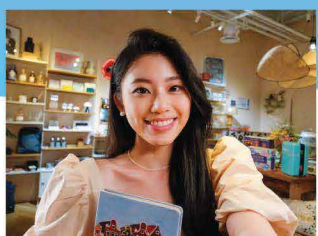
Easy one-handed usage with optional grip



Real-time Eye AF



Product Showcase Setting



Face Priority & Soft Skin Effect



Effortlessly portable weighing just 292g



Stay in focus with Touch Tracking



Intelligent 3-capsule mic with bundled windscreen



Active SteadyShot



Wide-angle Zoom



Touch Screen



Cinematic Vlog Setting



Intelligent 3-Capsule Mic



Real-Time Eye AF



Bokeh Switch



Product Showcase



Compact & Lightweight



BE READY TO CAPTURE EVERY SPECIAL MOMENT



*Shown here with optional GP-VPT2BT shooting grip.

Digital Camera ZV-1

Easy-to-use compact camera,
ideal for casual videography

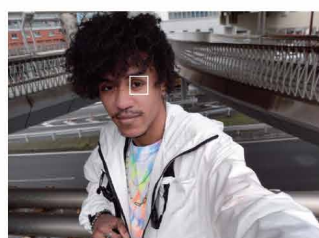
Color :  

Plug & Stream

High-quality video and audio
live-streaming with ease



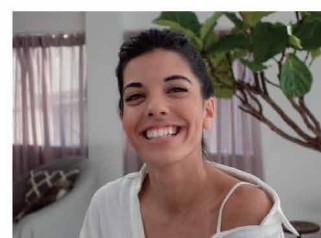
Easy one-handed usage with
optional grip



Real-time Eye AF



Product Showcase Setting



Face Priority & Soft Skin Effect



Vari-angle LCD Screen



Bokeh Switch for instant
background blur



Directional 3-capsule mic with
bundled windscreen



Active SteadyShot



One-push
bokeh switch



One-push
product
showcase
setting



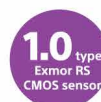
Face appeal
(Natural skin
tone & AE)



Eye AF
in video



Crystal Clear
Audio
Recording



Bigger sensor
size than
smartphone



Exmor RS
CMOS Sensor



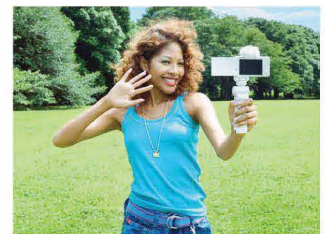
Easy one-handed usage with optional grip



Creative Look Presets



Wide-angle lens



Face Priority AE & Soft Skin Effect



Vari-angle LCD screen



Easy touch screen operation with one-push settings



Easy transfer of content to smartphones



Directional 3-capsule mic with bundled windscreen

Record and Share



*Shown here with optional GP-VPT2BT shooting grip.



Select the Best Scenes




Find and transfer the scenes you want easily by adding a Shot Mark

Vlog Camera ZV-1F

Easy-to-use vlog camera, ideal for social media content creation

Color:  

ELEVATE YOUR VLOGGING

-  20mm Wide Angle
-  Touch Screen
-  Cut Out & Transfer to Smartphone
-  Self Timer for Movies
-  Crystal Clear Audio Recording

BIONZ X

ZEISS

4K HDR

Exmor RS CMOS Sensor

*1. Animal Eye AF available for images only

VLOG TO YOUR FULL POTENTIAL



ZV-E1

World's Smallest & Lightest Full-Frame ILC Vlog Camera* Color: 



Exmor R
CMOS Sensor

BIONZ XR



5-axis
SteadyShot
INSIDE

12.1
MegaPixels

ISO up to
409,600

Real-time
Recognition
AF

Slow & Quick
Motion

Up to
4K120p

Intelligent
3-Capsule Mic

SET YOUR CREATIVITY FREE

ZV-E10

Interchangeable-lens vlog camera

Color:  

Exmor R
CMOS Sensor



4D FOCUS



APS-C Size
Image Sensor
24.2
Megapixels

ISO
100-32000

AF Speed
0.02
sec.

Phase Detection
425
AF Points

11
Frames
Per Sec

Real-time
Eye AF

Real-time
Tracking

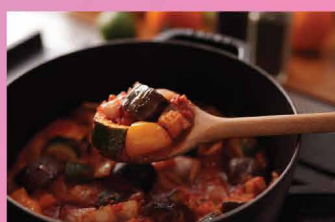
Microphone/
Headphone
Jacks



E 30mm F3.5 Macro (SEL30M35)
1/50 sec, F3.5, ISO 250



FE 90mm F2.8 G (SEL90M28G)
1/80 sec, F2.8, ISO 320



FE 35mm F1.4 GM (SEL35F14GM)
1/125 sec, F1.4, ISO 125



E 50mm F1.8 OSS (SEL50F18)
1/800 sec, F1.8, ISO 320

*1. 3840x2160 pixels. A Class 10 or higher SDHC/SDXC card is required for XAVC S format movie recording. A UHS-1 (U3) SDHC/SDXC card is required for 100Mbps. Connect this product to an HDR (HLG) compatible Sony TV via a USB cable when displaying HDR (HLG) movies.

COMPARISON CHART



MODEL	ZV-1 II	ZV-1	ZV-1F	ZV-E10	ZV-E1
Image Sensor	1.0-type Exmor RS CMOS / 20.1 MP	1.0-type Exmor RS CMOS image sensor	1.0-type Exmor RS CMOS image sensor	APS-C type (23.5 x 15.6mm) Exmor CMOS sensor	35mm full frame (35.6 x 23.8 mm), Exmor R CMOS sensor
Image Processor	BIONZ X™ image processing engine	BIONZ X™ image processing engine	BIONZ X™ image processing engine	BIONZ X™ image processing engine	BIONZ XR™ image processing engine
Lens	18-50mm (35mm format equivalent), F1.8 - 4.0	24-70mm (35mm format equivalent), F1.8-2.8	20mm (35mm format equivalent), F2.0	Kit Lens E PZ 16-50mm F3.5-5.6 OSS	Kit Lens, FE 28-60mm F4-5.6
Video Resolutions	Up to 4K25p (PAL) / Up to 4K30p (NTSC)	Up to 4K25p (PAL) / Up to 4K30p (NTSC)	Up to 4K25p (PAL) / Up to 4K30p (NTSC)	Up to 4K25p (PAL) / Up to 4K30p (NTSC)	Up to 4K100p (PAL) / Up to 4K120p (NTSC)
Photo Resolutions	20.1 megapixels	20.1 megapixels	20.1 megapixels	24.2 megapixels	12.1 megapixels max
ISO	125-12800 (Expanded ISO: 80-12800)	100-12800 (Expanded ISO: 64-80)	125-12800 (Expanded ISO: 80-100)	100-32000 (Expanded ISO: 50-51200)	ISO 80-102400 (Expanded to ISO: 40 - 409600)
AF Point	315 Phase Detection Points + 425 Contrast Detection Points (Fast Hybrid AF)	315 Phase Detection Points + 425 Contrast Detection Points (Fast Hybrid AF)	425 Contrast Detection Points	425 Phase Detection Points + 425 Contrast Detection Points (Fast Hybrid AF)	759 Phase Detection Points + 425 Contrast Detection Points (Fast Hybrid AF)
FPS	High-speed continuous shooting up to 24fps	High-speed continuous shooting up to 24fps	High-speed continuous shooting up to 16fps	High-speed continuous shooting up to 11fps	High-speed continuous shooting up to 10fps
Connections	Live-streaming with USB available, USB-C Terminal, Micro HDMI, Microphone Jack (3.5mm Stereo Minijack), and Multi-Interface Shoe	Live-streaming with USB available, Micro USB Terminal, Micro HDMI, Microphone Jack (3.5mm Stereo Minijack), and Multi-Interface Shoe	Live-streaming with USB available, USB-C Terminal, Micro HDMI, Microphone Jack (3.5mm Stereo Minijack), and Cold Shoe	Live-streaming with USB available, Micro USB Terminal, Micro HDMI, Microphone Jack (3.5mm Stereo Minijack), and Multi-Interface Shoe	Live-streaming with USB available, USB-C Terminal, Micro HDMI, Microphone Jack (3.5mm Stereo Minijack), and Multi-Interface Shoe
Battery Life	Approx. 290 shots (LCD monitor) (CIPA standard) Approx. 45 min (LCD monitor) (CIPA standard) Approx. 75 min (LCD monitor) (CIPA standard)	Monitor: Approx. 260 / Approx. 130min Monitor (When Auto Monitor off is set to 2sec) Approx. 410 / Approx. 205min	Monitor: Approx. 360 / Approx. 180min Monitor : (When Auto Monitor off is set to 2sec): Approx. 540 / Approx. 270min	Approx. 440 shots (LCD screen) (CIPA standard)	Approx. 570 shots (LCD monitor) (CIPA standard) Approx. 95 min (LCD monitor) (CIPA standard) Approx. 140 min (LCD monitor) (CIPA standard)
Image Record Format	JPEG & RAW	JPEG & RAW	JPEG only	JPEG & RAW	JPEG & RAW
Movie Record Format	XAVC S HD, XAVC S 4K	XAVC S HD, XAVC S 4K	XAVC S HD, XAVC S 4K	XAVC S HD, XAVC S 4K	XAVC HS 4K, XAVC S 4K, XAVC S HD, XAVC S-I 4K, XAVC-I HD
Dimensions	105.5 x 60.0 x 46.65mm	105.5 x 60.0 x 43.5mm	105.5 x 60.0 x 46.4mm	Approx. 115.2 x 64.2 x 44.8mm (from grip to monitor)	Approx. 121.0 x 71.9 x 54.3 mm (from grip to monitor)
Weight	293g (With battery and memory card)	294g (With battery and memory card)	256g (With battery and memory card)	343g (With battery and memory card)	483g (With battery and memory card)