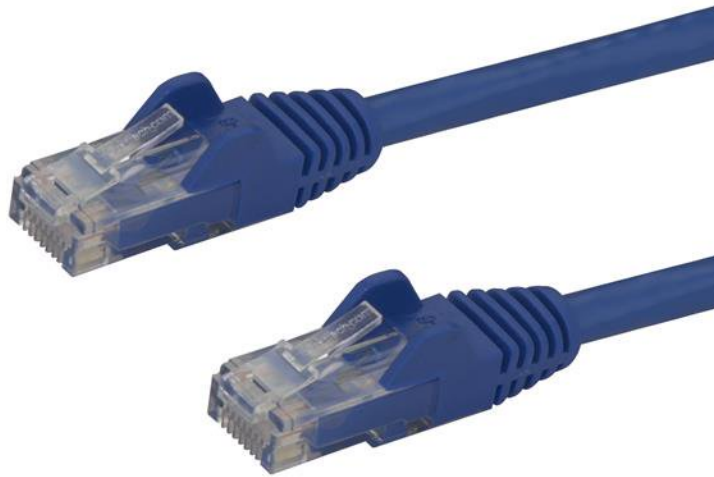


Cat6 Ethernet Patch Cable with Snagless RJ45 Connectors - 9 ft., Blue

Product ID: N6PATCH9BL



This Cat6 cable delivers reliable Gigabit network connections, which ensures high-performance capability for your demanding Ethernet applications.

Find the length and color you need

This 9-foot blue patch cable is perfect for standard applications such as connecting from a wall jack to your laptop docking station or desktop computer.

For easier network installations, our Cat6 patch cables are available in a wide variety of lengths and colors. This ensures you have the right size of cable available when you need it and it lets you color code your connections for a more organized setup.

Snagless RJ45 clips help protect your network connections

For trouble-free cable runs, this durable cable features snagless connectors that protect the RJ45 clips during installation, making them less likely to snag or break.

The cable also features molded boots which offer connector strain relief by stopping the RJ45 connector termination points from bending at sharp angles. This reduces the risk of damage to the cable, which could decrease network connectivity and performance.

100% copper for outstanding value

Get the highest value for your cable investment with our Cat6 Ethernet cables. Each of our patch cables is manufactured using high-quality copper conductors and they are carefully constructed and tested, to keep Near-End Crosstalk (NEXT) well within acceptable limits.

24-gauge wire for high-performance network connections

Ensure high-performance capability for your demanding Ethernet applications, such as Power-over-Ethernet and 4K or 1080p video streaming, using cables that include 24 AWG copper.

50-micron gold connectors provide peak conductivity

You can rely on our RJ45 connectors to deliver optimum conductivity while eliminating signal loss due to oxidation or corrosion.

The N6PATCH9BL is backed by StarTech.com's lifetime warranty for guaranteed reliability.

Certifications, Reports and Compatibility



Applications

- Designed for use with Gigabit networks
- Patches from hub to distribution panel
- Connects workstation to wall outlet

Features

- RJ45 connector-clip protectors eliminate cable snags and breaks during installation
- Blue PVC jacket for color coding your connections
- 9 ft. in length
- Molded RJ45 connectors prevent cable damage and also provide strain relief
- 50-micron gold-plated connectors for a clear signal
- High-quality 24 AWG copper wire
- ETL verified

Hardware	Warranty	Lifetime
	Cable Jacket Type	PVC - Polyvinyl Chloride
	Cable Type	Snagless
	Connector Plating	Gold
	Fire Rating	CMG Rated (General Purpose)
	Number of Conductors	4 pair UTP
	Wiring Standard	TIA/EIA-568-B.1-2001 T568B
Performance	Cable Rating	CAT6 - 650 MHz
Connector(s)	Connector A	1 - RJ-45 Male
	Connector B	1 - RJ-45 Male
Physical Characteristics	Cable Length	9 ft [2.7 m]
	Color	Blue
	Conductor Type	Stranded Copper
	Product Length	9 ft [2.7 m]
	Weight of Product	4.2 oz [118 g]
	Wire Gauge	24 AWG
Packaging Information	Package Height	0.4 in [10 mm]
	Package Length	8.9 in [22.5 cm]
	Package Width	7.9 in [20 cm]
	Shipping (Package) Weight	4.5 oz [128 g]
What's in the Box	Included in Package	1 - Cat6 patch cable

Product appearance and specifications are subject to change without notice.