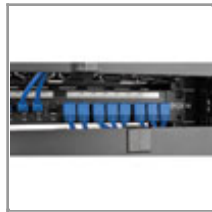


Cat6 Gigabit Molded Patch Cable (RJ45 Right Angle Down M to RJ45 M) - Blue, 3-ft.

MODEL NUMBER: N204-003-BL-DN



Highlights

- Space saving design
- Right Angle Down connector to Straight
- Cat6 Gigabit rated

System Requirements

- Use with Cat6, Cat5e, Cat5, or VoIP networks

Package Includes

3ft Blue Cat6 Right Angle Down to Straight RJ45 - RJ45 Patch cable

Description

Tripp Lite's Angled Cat6 Patch Cables are ideal for where connections are in tight quarters. Choose from Up, Down, Left, and Right angled cables, depending on your situation. Reduces stress on the cable, and excessive bending. Great for switches and patch panels in networking racks, or behind desks and wall connections. Meets or exceeds Cat6 specifications. Fully molded ends for a lifetime of use.

Features

- 3ft Blue Cat6, Right Angle Down to Straight RJ45 - RJ45 Patch cable
- PVC 4 Pair Stranded Conductors, 24AWG
- Fully Molded Ends
- ETL Verified to TIA/EIA -568-B
- 550Mhz Gigabit Speed Rated

Specifications

INPUT	
Cable Length (ft.)	3
Cable Length (m)	0.91
PHYSICAL	
Color	Blue
CONNECTIONS	
Connector A	RJ45 (MALE)
Connector B	RJ45 (MALE) - DOWN ANGLE



Tripp Lite
1111 W. 35th Street
Chicago, IL 60609 USA
Telephone: 773.869.1234
www.tripplite.com

CERTIFICATIONS	
Certifications	Tested to
WARRANTY	
Product Warranty Period (Worldwide)	Lifetime limited warranty

© 2016 Tripp Lite. All rights reserved. All product and company names are trademarks or registered trademarks of their respective holders. Use of them does not imply any affiliation with or endorsement by them. Tripp Lite has a policy of continuous improvement. Specifications are subject to change without notice. Tripp Lite uses primary and third-party agencies to test its products for compliance with standards. See a list of Tripp Lite's testing agencies: <http://www.tripplite.com/products/product-certification-agencies>