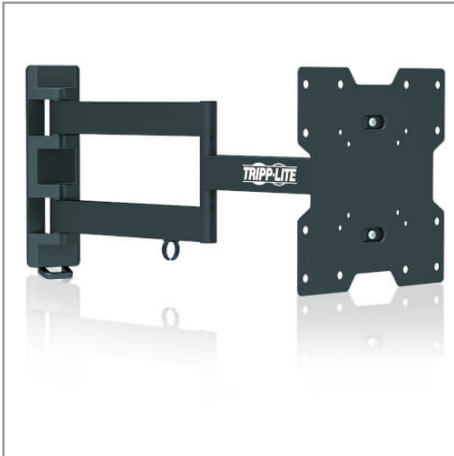


Swivel/Tilt Wall Mount with Arms for 17" to 42" TVs and Monitors, UL certified

MODEL NUMBER: DWM1742MA



Hangs a flat-panel television, monitor or other display on the wall. Ideal for home theaters, classrooms, boardrooms, hotels, bars and restaurants. Swivels and tilts to provide optimal viewing angles.

Description

The VESA-compliant DWM1742MA Swivel/Tilt Wall Mount allows you to mount your flat-panel television, monitor or other display on the wall. Ideal for home theaters, classrooms, boardrooms, hotels, bars and restaurants, it fits most flat-panel displays from 17 to 42 inches.

The full-motion swivel arm can be adjusted for angle to give you maximum flexibility in positioning your display to fit your environment and comfort level. A 180° swivel, -15° to +15° tilt and -3° to +3° screen level adjustment capability minimizes glare and provides comfortable viewing from multiple angles.

Durable all-metal frame with scratch-resistant powder-coated finish supports up to 77 lbs (34.9 kgs).

Mounting hardware included. Conforms to VESA-compliant displays with any of the following mounting hole patterns: 75 x 75 mm, 75 x 100 mm, 75 x 200 mm, 100 x 75 mm, 100 x 100 mm, 100 x 200 mm, 200 x 75 mm, 200 x 100 mm and 200 x 200 mm.

Features

Mounts Your TV or Monitor to the Wall Fits most flat-panel televisions, monitors and other displays from 17 to 42 in. Ideal for home theaters, classrooms, boardrooms, hotels, bars and restaurants Full-motion swivel arm adjusts for angle Mounting hardware included UL certified

Convenient One-Touch Adjustment 180° swivel, -15° to +15° tilt and -3° to +3° screen level adjustment capability provides comfortable viewing from multiple angles

Durable Metal Construction Supports up to 77 lbs (34.9 kgs) Scratch-resistant powder-coated finish blends with any décor Display cables attach to mount to reduce clutter

VESA Compliance Supports the following VESA mounting hole patterns: 75 x 75 mm, 75 x 100 mm, 75 x 200 mm, 100 x 75 mm, 100 x 100 mm, 100 x 200 mm, 200 x 75 mm, 200 x 100 mm and 200 x 200 mm

Highlights

- Fits most flat-panel displays from 17 to 42 in.
- One-touch adjustment for comfortable viewing
- 180° swivel, -15° to +15° tilt and -3° to +3° screen adjustment
- Supports up to 77 lbs (34.9 kgs)
- UL certified

Package Includes

- Arm assembly
- (2) Top/bottom covers
- Middle cover
- Mounting template
- Cable cover
- Cable clip
- M4 x 5 screw
- (4) M4 x 14 screws
- (4) M5 x 14 screws
- (4) M6 x 14 screws
- (4) M8 x 20 screws
- (4) D5 washers
- (4) D8 washers
- (8) Small spacers
- (4) Anchor bolts
- (4) Concrete anchors
- (4) D6 washers
- Hex key
- Owner's manual

Specifications

| OVERVIEW | |
|----------------------|--------------|
| UPC Code | 037332183545 |
| Device Compatibility | Monitor/HDTV |



| PHYSICAL | |
|--------------------------------------|---|
| Color | Black |
| VESA Pattern (mm) | 100x100; 100x200; 100x75; 200x100; 200x200; 200x75; 75x100; 75x200; 75x75 |
| Degrees of Motion | -15/+15 Tilt; 180 Swivel; -3/+3 Level Adjustment |
| Material of Construction | Steel |
| Maximum Screen Size (cm) | 106.68 |
| Maximum Screen Size (in.) | 42 |
| Maximum Weight Capacity (kg) | 35 |
| Maximum Weight Capacity (lbs.) | 77 |
| Min/Max Arm Extension (cm) | 5.6 min to 51 max |
| Min/Max Arm Extension (in.) | 2.21 min to 20.08 max |
| Minimum Screen Size (in.) | 17 |
| Minimum Screen Size (cm) | 43.18 |
| Motion | Full |
| Mounting Location | Wall |
| Number of Displays | 1 |
| Shipping Dimensions (hwd / cm) | 8.64 x 39.62 x 29.72 |
| Shipping Dimensions (hwd / in.) | 3.40 x 15.60 x 11.70 |
| Shipping Weight (kg) | 3.86 |
| Shipping Weight (lbs.) | 8.50 |
| Unit Dimensions (hwd / cm) | 28.2 x 49.4 x 22.2 |
| Unit Dimensions (hwd / in.) | 11.10 x 19.44 x 8.7 |
| Unit Weight (kg) | 3.57 |
| Unit Weight (lbs.) | 7.88 |
| FEATURES & SPECIFICATIONS | |
| Tools Necessary | Yes |
| SPECIAL FEATURES | |
| Cord Management | Yes |
| Security Lock | No |
| STANDARDS & COMPLIANCE | |
| Certifications | UL 2442 |
| Approvals | RoHS3, REACH |



Tripp Lite
1111 W. 35th Street
Chicago, IL 60609 USA
Telephone: 773.869.1234
www.tripplite.com

| WARRANTY | |
|-------------------------------------|-------------------------|
| Product Warranty Period (Worldwide) | 5-year limited warranty |

© 2021 Tripp Lite. All rights reserved. All product and company names are trademarks or registered trademarks of their respective holders. Use of them does not imply any affiliation with or endorsement by them. Tripp Lite has a policy of continuous improvement. Specifications are subject to change without notice. Tripp Lite uses primary and third-party agencies to test its products for compliance with standards. See a list of Tripp Lite's testing agencies: <https://www.tripplite.com/products/product-certification-agencies>