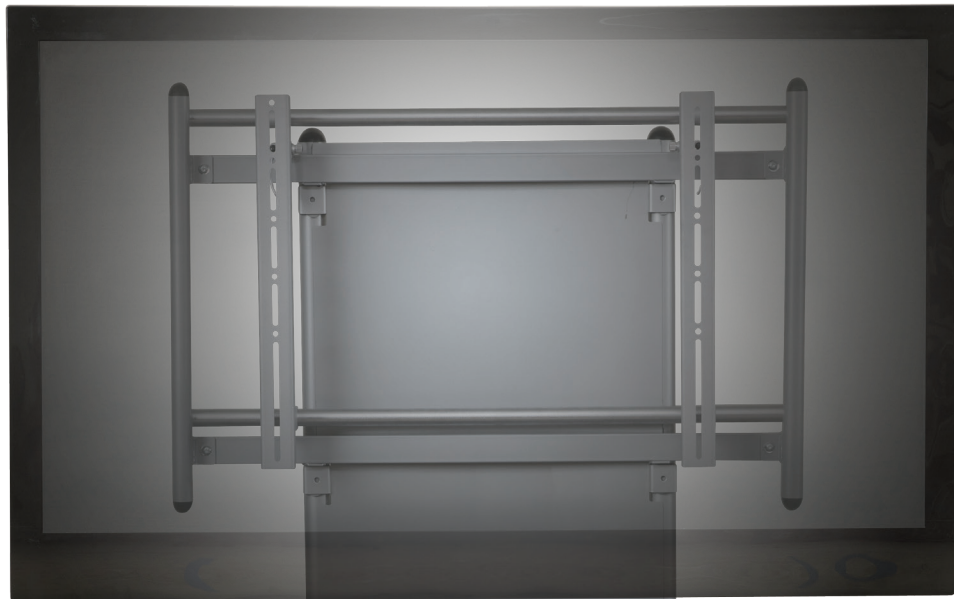


# Elevation Mobile Flat Panel Stand

Mobile Stand + Flat Panel Mount

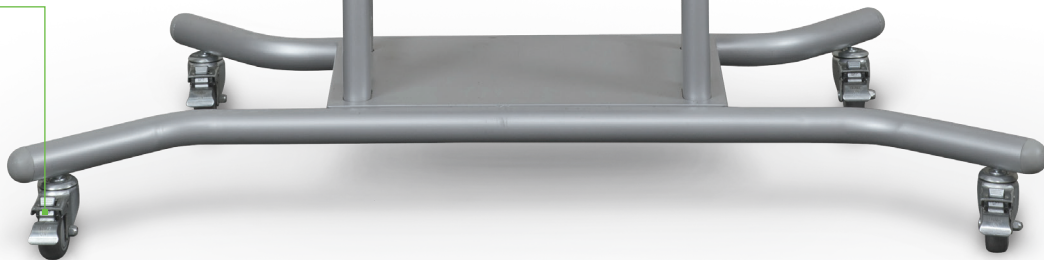
in stock



Flat panel bracket can be mounted at two different heights

AV equipment shelf  
measures 28"W x 13.75"D

Heavy duty 4" casters  
all locking for stability





## Elevation Mobile Flat Panel Stand

- The Elevation Mobile Flat Panel Stand package offers mobility and flexibility for your large flat panel display.
- Stand is fixed height, but flat panel bracket can be mounted at two different heights (43" or 59" on center; please note overall height and clearance will vary with size of display).
- Brushed silver frame is attractive, durable, and provides equipment storage.
- Supports a display up to 250 lbs.
- Optional adjustable sidewing table (89.25" to 130.38" wide) keeps a laptop within arm's reach. Included shelf measures 17.75"W x 12.63"D. Additional second shelf available separately.
- Optional locking cabinet available for secure storage. Features ventilation holes and a removable shelf. Measures 26.88"H x 17.88"W x 15.13"D.
- Optional power strip surge protector available.
- TAA compliant. Has achieved GREENGUARD GOLD Certification.
- Contact customer service to determine compatibility for your specific device.



Part No.	Item	Product Dimensions	Ship Wt.
<b>Elevation Mobile Flat Panel Stand</b>			
27650	Elevation Cart + Flat Panel Mount	74"H x 58"W x 30.25"D	184 lbs
<b>Optional Accessories</b>			
66615	Sidewing Arm + Shelf (1)	89.25" - 130.38"W x 12.63"D	20 lbs
66620*	Sidewing Shelf	17.75"W x 12.63"D	6 lbs
66614*	Locking Cabinet	26.88"H x 17.88"W x 15.13"D	36 lbs
66572*	Deluxe Power Strip with Surge Protector	7 outlets / 25' cord / cord winder	4 lbs

\*Ships UPS  
Shipping weights are listed on a per item basis and may vary based on quantities ordered.



**MooreCo | Balt | Best-Rite**  
 2885 Lorraine Avenue | Temple, TX 76501  
 P. 800.749.2258 | F. 866.888-7483  
[www.moorecoinc.com](http://www.moorecoinc.com)