

SHARP®

PN-Y556
PN-Y496
PN-Y436
PN-Y326

Professional LCD Monitors

Stylish LCD Monitors Offer Versatile Signage Solutions



Sharp offers an effective and convenient solution for digital signage. Our 55" Class (54.6" diagonal) PN-Y556 displays, 49" Class (48.5" diagonal) PN-Y496 displays, 43" Class (42.5" diagonal) PN-Y436 displays and 32" Class (31.6" diagonal) PN-Y326 displays are designed for ease of use and flexibility in a variety of settings. Simple and stylish, they have the functionality to support easy content distribution. Whether in a retail, public, or office setting, these monitors can help convey your message and make an eye-catching impression. So if you're seeking a multifaceted signage solution with around-the-clock reliability and easy content distribution, these affordable slimline monitors offer outstanding value.

The Quality to Present Attractive Signage

Excellent Image Quality

Full HD (1,920 × 1,080) resolution brings images to life with vivid, true-to-life details. Everything from thin lines to fine text to photographic images can be displayed in stunning clarity.

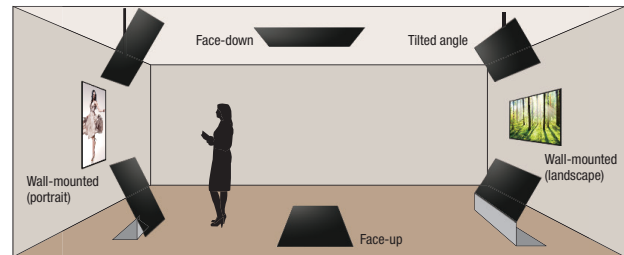
Simple and Stylish Design

A narrow 9.5-mm* bezel keeps the emphasis on onscreen content, so that information is conveyed clearly and attractively. The simple and stylish design matches a variety of locations and business settings, from small shops to large corporations and industrial environments.

* PN-Y556/Y496/Y436: 9.5 mm (right/left/top), 15.6 mm (bottom); PN-Y326: 10.6 mm (right/left/top), 15.6 mm (bottom)

Adaptable to Various Settings

Whether in a landscape or portrait orientation, these monitors can be installed face up, face down, or tilted forward or backward at an angle of up to 90 degrees. Such flexibility helps you to incorporate the monitors into a wider-than-ever variety of settings.



Note: Please consult with your local authorized Sharp dealer or representative regarding tilttable angles and other installation conditions.

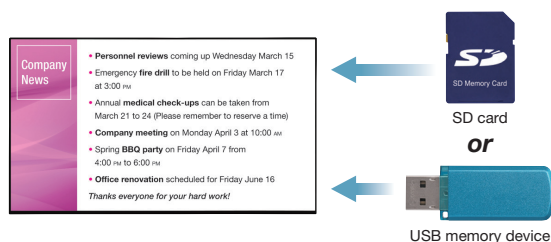
Easy and Versatile Signage Support

PN-Y556/Y496/Y436/Y326 LCD monitors support easy daily usage and versatile content distribution. Simply insert a USB memory device or SD card for plug-and-play operation. Using a specified wireless SD card equipped with an original Sharp HTML application, you can distribute content wirelessly from a PC or mobile device. Furthermore, SHARP Content Distributor software supports convenient content distribution and management via network. Thanks to their versatile signage capabilities, these monitors make it easy to convey messages in public spaces or commercial locations, or promote internal communication in the office.



Autoplay via Media Player

Displaying still images or videos couldn't be easier. Just insert a USB memory device or SD card into the LCD monitor and the built-in media player starts playing your content right away. There's no need for a PC and cables. It's easy for anyone to operate.



Note: A USB memory device and an SD card should not be used simultaneously.

Supported media formats: JPEG and PNG for still images; MP4, WMV, and TS for videos; and MP3 and WMA for audio. JPEG (.jpg) and WMV (.wmv) files can be played automatically.

Easy Overwrite via Wireless LAN

With a specified wireless SD card*, you can wirelessly overwrite the content stored on the card. Using a wireless LAN makes it easy to distribute content from a PC, tablet or other mobile device, giving you a convenient data-transmission experience. There's no need to insert or remove the card at the back of the monitor when you want to overwrite the content. This not only saves you time, it also gives you more freedom to install the monitor where it's hard to reach—for example in a high place.



* Toshiba FlashAir™ equipped with the requisite Sharp HTML application. Not compatible with FlashAir W-02 or earlier versions. Please consult with your local authorized Sharp dealer or representative regarding availability of the application and SD card.

Timely Content Distribution via Network



Operating over a LAN, SHARP Content Distributor software makes it easy to update the content to be displayed on multiple LCD monitors. Through simple and intuitive PC operation, you can schedule **what** content gets distributed, **when** it gets delivered, and **which** monitors show it. Take advantage of a convenient signage solution that lets you distribute content in a timely manner to multiple PN-Y556/Y496/Y436/Y326 monitors.

Note: Either a USB memory device or an SD card is required for each monitor.

Content List

Register up to 50 content lists, each comprising up to 30 files* of either pictures or videos. Creating and updating a customised content list is simple, thanks to intuitive operation.

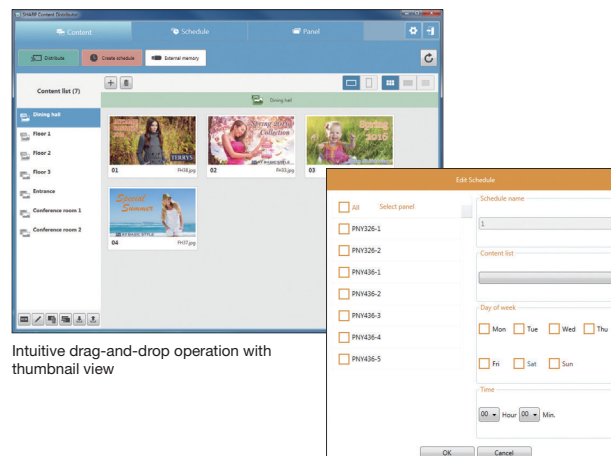
* A content list can comprise a group of either still images (JPEG) or videos (WMV).

Scheduling

Set a time and day of the week for content distribution to a maximum of 20 pre-registered LCD monitors. Up to seven schedule patterns can be registered.

Log Management

Easily manage individual content distribution logs that include date/time, results, and names of content lists, as well as IP addresses, names, and locations of monitors. This information can be viewed and managed on a PC screen.



Intuitive drag-and-drop operation with thumbnail view

Easy editing of distribution schedules

Other Key Features

24/7 Operation for use in demanding professional applications that require around-the-clock operation seven days a week.

Power On Delay lets you delay the startup of each monitor in a multi-monitor installation. This reduces the load placed on the power supply when multiple monitors are turned on at the same time.

Fanless Architecture maintains airflow while dissipating heat, without the use of noisy, dust-creating mechanical air-ventilation fans. The fanless design also facilitates maintenance.

Built-In Speakers eliminate the need for external speakers and ensure a stylishly streamlined profile.

Anti-Theft Covers for USB memory device and SD card slots provide enhanced security.

Built-In Temperature Sensor detects rising temperatures inside the monitor and automatically prompts an adjustment of the backlight brightness to keep the temperature within operational levels.

Mirror Display (Daisy Chain) Mode enables the same image to be displayed on a series of daisy-chained LCD monitors, for the powerful impact of visual repetition.

Note: Via DVI-D connection.

ID Setting for easy control of individual monitors. An RS-232C interface enables multiple monitors* to be managed from a central location via a PC. Each monitor can be assigned an individual ID code to use when remotely turning that monitor on or off, changing its input, or making various screen adjustments and settings.

* PN-Y556/Y496/Y436/Y326 monitors can be connected together in a daisy chain configuration.

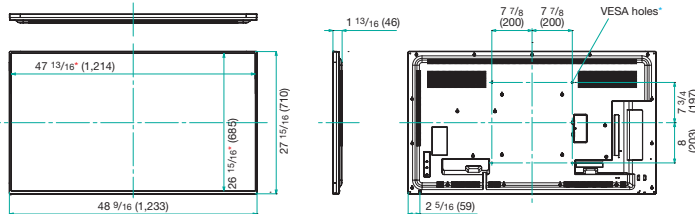
Specifications

Model Name	PN-Y556	PN-Y496	PN-Y436	PN-Y326	
Installation	Landscape / Portrait / Face-up / Face-down				
LCD Panel	55" Class (54.6" diagonal) TFT LCD	49" Class (48.5" diagonal) TFT LCD	43" Class (42.5" diagonal) TFT LCD	32" Class (31.6" diagonal) TFT LCD	
Max. Resolution	1,920 x 1,080 pixels				
Max. Display Colors (approx.)	16.77 million colors				
Pixel Pitch (H x V)	0.630 x 0.630 mm	0.559 x 0.559 mm	0.490 x 0.490 mm	0.364 x 0.364 mm	
Max. Brightness*1	450 cd/m ²			400 cd/m ²	
Contrast Ratio	1,100 : 1				
Viewing Angle (H/V)	178°/178° (CR ≥ 10)				
Active Screen Area (W x H)	47 5/16" x 26 13/16"	42 1/4" x 23 3/4"	37 1/16" x 20 13/16"	27 1/2" x 15 7/16"	
Response Time	12 ms (grey to grey, avg.)			10 ms (grey to grey, avg.)	
Backlight	LED, edge lit			LED, full array	
Computer Input	Analog RGB (0.7 Vp-p) [75Ω], Digital (conforms to DVI 1.0 standards), HDMI™				
Video	Analog RGB (0.7 Vp-p) [75Ω], Digital (conforms to DVI 1.0 standards), HDMI™				
Synchronization*	Horizontal/vertical separation (TTL: positive/negative)				
Plug & Play	VESA DDC2B				
Power Management	VESA DPMS, DVI DMPM				
Video Color System	NTSC (3.58 MHz)				
Input Terminals*2	DVI-D 24 pin x 1 (HDCP compatible), Mini D-sub 15-pin x 1*3, HDMI x 1 (1080p compatible), RS-232C x 1, 3.5 mm-diameter mini stereo jack x 2, USB x 1 (image, video, audio)*4, SD card x 1 (image, video, audio)*4				
Output Terminals*2	DVI-D 24 pin x 1 (HDCP compatible), RS-232C x 1, 3.5 mm-diameter mini stereo jack x 1				
Input/Output Terminals*2	LAN: 10Base-T/100Base-TX x 1				
Built-In Speakers	7 W + 7 W			5 W + 5 W	
Mounting	VESA (4 points), 400 mm (15 3/4") pitch, M6 screw			VESA (4 points), 200 mm (7 7/8") pitch, M6 screw	
Power Supply	100V – 240V AC, 50/60 Hz				
Continuous Operation	24 hrs				
Power Consumption	105 W	87 W	76 W	69 W	
Environmental Conditions	Operating Temperature				
	0°C to 40°C				
		Operating Humidity			
		20% to 80% RH (no condensation)			
Dimensions (W x D x H) (approx.) (display only)	48 9/16" x 1 13/16" x 27 15/16"	43 3/16" x 1 13/16" x 24 15/16"	38" x 1 13/16" x 22"	28 1/2" x 2 3/16" x 16 11/16"	
Weight (approx.)	39.7 lbs	33.1 lbs	23.1 lbs	13.2 lbs	
Main Accessories	AC power cord, remote control unit, battery (AA size x 2), set-up manual, CD-ROM, cable clamp x 2, cover screw x 2, logo sticker, USB flash drive cover*5, SD memory card cover				

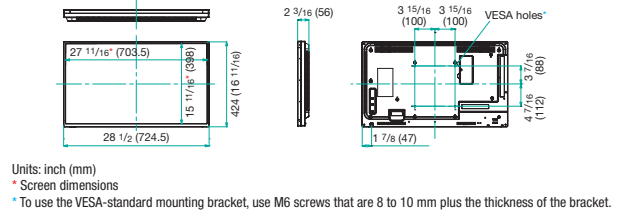
*1 Brightness depends on input mode and other picture settings. Brightness level will decrease slightly over the lifetime of the product. Due to the physical limitations of the equipment, it is not possible to maintain a precisely constant level of brightness. *2 Use a commercially available connection cable for PC and other video connections. *3 Analog PC, video, and component video are switchable (via the bottom interface); use the menu to select. Note that video and component video inputs require a conversion cable connected via the mini D-sub 15-pin jack. *4 Supported media formats: JPEG and PNG for still images; WMV, MP4, and TS for videos; and MP3 and WMA for audio. JPEG (.jpg) and WMV (.wmv) files can be played automatically. *5 Size of USB device (incl. terminal) usable with cover: max. 50 x 20 x 12 mm (LxWxH). Sync-on-green and composite sync are not supported.

Dimensions

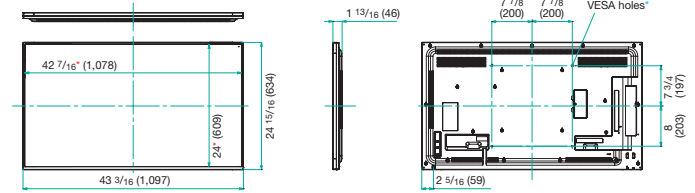
(PN-Y556)



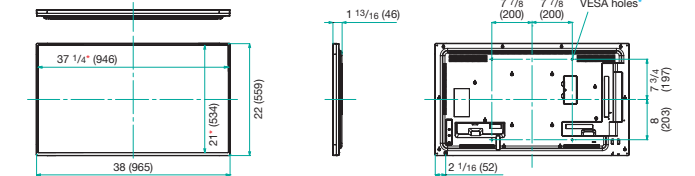
(PN-Y326)



(PN-Y496)

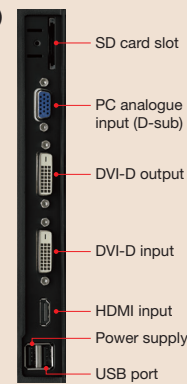


(PN-Y436)

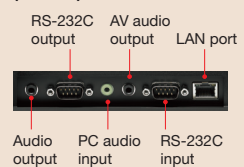


Input/Output Terminals

(Side)



(Bottom)



SHARP ELECTRONICS CORPORATION
 100 Paragon Drive, Montvale, NJ 07645
 1-800-BE-SHARP • www.sharpsusa.com

Design and specifications are subject to change without notice. Sharp is a registered trademark of Sharp Corporation. HDMI, the HDMI logo, and High-Definition Multimedia Interface are trademarks or registered trademarks of HDMI Licensing Administrator, Inc. in the United States and other countries. FlashAir is a trademark of Toshiba Corporation. All other brand names and product names may be trademarks or registered trademarks of their respective owners. All screen images appearing in this brochure are simulated.

